



2016 BUCKNELL WOMEN'S LACROSSE



TEAM CAPTAINS (L-R) SAM RICKELS, ALLY FURBAY, MADDY MOLINARI, ANNIE GILBERTSON, LUCIA SMIRICICH



Welcome to Bison Lacrosse

2016 ROSTER

No.	Name	Cl.	Pos.	Ht.	Hometown/Secondary School
2	Maddy Molinari	Jr.	M/A	5-4	Manhasset, N.Y./Manhasset
3	Mary Margaret Kenney	So.	M	5-4	Summit, N.J./Oak Knoll School
5	Eleanor Hagan	Fr.	D	5-4	Ho-Ho-Kus, N.J./Northern Highlands
6	Gretchen Richter	So.	M	5-7	Bronxville, N.Y./Bronxville
7	Callie DeWitt	Fr.	M	5-4	Basking Ridge, N.J./Ridge
8	Eve Lukowski	So.	A	5-8	Ellicott City, Md./Mount de Sales Academy
9	Sam Rickels	Sr.	M	5-8	Forest Hill, Md./Towson
10	Amy Collins	So.	M	5-7	Waxhaw, N.C./Marvin Ridge
13	Jamie DeWitt	Fr.	G	5-1	Basking Ridge, N.J./Ridge
14	Corley Simons	So.	D	5-10	Purcellville, Va./Loudon Valley
15	Christina Manis	Jr.	A	5-7	Manhasset, N.Y./Manhasset
16	Sarah Galzerano	So.	A	5-4	Garden City, N.Y./Sacred Heart Academy
17	Erika Stube	So.	D	5-9	Manlius, N.Y./Fayetteville-Manlius
19	Rennie Tankersley	Sr.	D	5-7	Parkton, Md./Hereford
20	Annie Collett	Fr.	D	5-8	Randolph, N.J./Villa Walsh Academy
21	Audrey Walsh	Fr.	A	5-10	Needham, Mass./Needham
22	Meg Nolen	Fr.	M	5-6	Dover, Mass./Thayer Academy
23	Bridget Shaffrey	Jr.	A	6-1	Charlottesville, Va./Western Albemarle
24	Katherine Doyle	So.	D	5-9	Vienna, Va./Flint Hill School
25	Becca Golding	Jr.	M	5-6	Rancho Palos Verdes, Calif./Palos Verdes
26	Ally Furbay	Sr.	M	5-8	Massillon, Ohio/Jackson
28	Courtney Burke	Jr.	A	5-6	Huntington, N.Y./Cold Spring Harbor
34	Emily Becker	Sr.	A	5-10	Pompano Beach, Fla./Pine Crest
41	Lucia Smircich	Jr.	D	5-8	Stirling, N.J./Villa Walsh Academy
43	Annie Gilbertson	Jr.	D	5-9	Fair Haven, N.J./Rumson-Fair Haven
48	Elizabeth Duswalt	Jr.	G	5-6	Davidsonville, Md./South River

Head Coach: Randall Swope (Maryland '97), 7th year

Assistant Coach: Jenna Petrucelli (Mary Washington '14)

Student Manager: Charlotte O'Donnell



QUICK FACTS

University Information

Location: Lewisburg, Pennsylvania, 17837

Founded: 1846 as the University at Lewisburg

Enrollment: 3,500

Nickname: Bison

Colors: Orange and Blue

Affiliation: NCAA (Div. I), ECAC

Conference: Patriot League (American, Army West Point, Boston University, Bucknell, Colgate, Holy Cross, Lafayette, Lehigh, Loyola Maryland and Navy)

Stadium: Graham Field (1,000)

President: John C. Bravman

Director of Athletics: John P. Hardt

Senior Woman Administrator: Maisha Kelly

Dir. of Athletic Communications: Jon Terry

Head Athletic Trainer: Mark Keppler

Women's Lacrosse Information

Head Coach: Randall Swope

Alma Mater: Maryland '97

Record at Bucknell: 32-66 (7th Season)

Career Record: 58-88 (10th Season)

Assistant Coach: Jenna Petrucelli

2015 Record: 2-15, 0-8 Patriot League

2015 Conference Finish: 9th

Postseason: None

Letterwinners Returning/Lost: 20-9

Starters Returning/Lost: 10/2

2016 Captains: Ally Furbay, Annie Gilbertson,

Maddy Molinari, Sam Rickels, Lucia Smircich

Women's Lacrosse Phone: (570) 577-3717

Email: erg008@bucknell.edu

Web Page: www.BucknellBison.com

Twitter: @BisonSports

Team Twitter: @Bucknell_W_Lax

Facebook: Bucknell Women's Lacrosse

Athletic Department FAX: (570) 577-1660

Women's Lacrosse Address: Women's Lacrosse Office, Langone Athletics & Recreation Center, Bucknell University, Lewisburg, PA 17837

Athletic Communications Contact: Jon Terry

Phone: (570) 577-3121

E-Mail: terry@bucknell.edu

Fax: (570) 577-1660

Credits: This book was written and edited by Bucknell's Office of Athletic Communications. Photography by Marc Hagemeyer and Joel Turrell.

GO BISON!



Capital One
Academic All-American
NSCAA Scholar All-American
JESSE KLUG



Capital One
Academic All-District
AUDREY DOTSON



Capital One
Academic All-District
MATT DeMAURO



Patriot League
Scholar-Athlete of Year
Field Athlete of Year
SOPHIA NNADI



3x NCAA Qualifier
JOE STOLFA



Patriot League
Award of Leadership &
Character
AMANDA SEIFERT



Honorable Mention
All-American
STEFAN ALEKSIC

BUCKNELL BISON ATHLETICS

SETTING THE STANDARD OF EXCELLENCE

Bucknell takes great pride in its commitment to excellence on and off the playing fields. From Presidents' Cups to Academic All-Americans to graduation rates that are ranked annually in the national top-10, Bucknell is clearly at the head of the class when it comes to upholding the scholar-athlete ideal.

- According to federal data released by the NCAA each fall, Bucknell's student-athlete graduation rate annually ranks in the top 10 among all Division I institutions. Bucknell has led the nation in graduation rates three times and ranked second in the most recent survey in the fall of 2015.
- All 27 Bison varsity teams easily met the NCAA's Academic Performance Rate (APR) standards once again last year. In fact, 19 programs boast perfect scores in the four-year rolling average. Bucknell received 19 NCAA Academic Progress Rate (APR) National Recognition Awards, the second-highest total among all Division I institutions.
- Bucknell has claimed a league-high 140 Patriot League Scholar-Athletes of the Year since the league's inception as an all-sports conference in 1990-91.
- A total of 441 Bison appeared on the Patriot League Academic Honor Roll in 2014-15 after recording a GPA of 3.2 or better during their sport's competition season. Among all BU student-athletes, 319 made the Dean's List with GPAs of 3.5 or better during the spring 2015 semester.
- In addition to the 128 Capital One Academic All-Americans produced since 1970, Bucknell has also claimed 350 Academic All-District honorees over the same span, including five in 2014-15.

- Bucknell has earned 101 Patriot League championships in 25 years in the league. In addition, Bucknell has had 129 conference players of the year, 110 PL coaches of the year and a whopping 605 individual league champions from sports such as cross country, track & field, swimming & diving, tennis and golf.
- 26 of Bucknell's 27 varsity squads posted team GPAs of 3.0 or better in the spring of 2015.
- Bucknell has captured the Patriot League Presidents' Cup, signifying the league's all-sports champion, 18 times in the 25-year history of the affiliation, including 14 of the last 18 years.
- Bucknell ranks FIFTH in the nation (to Nebraska, Notre Dame, Penn State and Stanford) in total number of Capital One Academic All-America selections with 128.
- A major element in ensuring Bucknell's commitment to athletics excellence is the Kenneth G. Langone Athletics & Recreation Center, which opened fully in 2003. One of the finest collegiate athletics facilities of its kind, the center includes the 4,000-seat Sojka Pavilion, the Olympic class Kinney Natatorium, the Krebs Family Fitness Center and the Berger Family Weight Room. A Hall of Fame area, a display of Bucknell's Medal of Honor recipients, an Academic All-America wall, a sports medicine suite, modern offices for coaches and staff, and locker room and classroom space are also included in the facility's layout.



Academic All-Patriot League
MARIA GOFFI



Capital One Academic
All-District
DEREK MAURER



NCAA Qualifier
CSCAA Scholar All-American
EMMA LEVENDOSKI



NWCAA All-Academic Team
PAUL PETROV



NFHA All-Region
KELSEY MUGELLI



USILA Scholar All-American
BEN KELLAR



Patriot League
All-Academic Team
BLAIR McDONALD



Patriot League
Player of Year
NICK 'BYBEL



BU All-Time Hits Leader
CYNDÉE SANDERS



Patriot League
Scholar-Athlete of Year
SAM GRINBERG



PL Scholar-Athlete of Year
KATIE JESSEE



Patriot League
Award of Leadership &
Character
RYAN GRAZIER



NSCAA Scholar All-Region
COURTNEY NELSON



Patriot League Indoor
Track Athlete of Year
ANDREW GARCIA-GARRISON

BUCKNELL BISON ATHLETICS

A NATIONAL MODEL IN PROMOTING THE SCHOLAR-ATHLETE IDEAL

Bucknell Athletics is first and foremost a student-centered organization, one that strives to be a national leader when it comes to operating by a true scholar-athlete model. At Bucknell, student-athletes' academic programs are their first priority, and providing a competitive Division I athletics program only advances the mission, values and residential learning goals of the university. To that end, the Department of Athletics and Recreation proactively seeks ways to assist student-athletes in their daily academic pursuits. Below are just some of the student-athlete support programs currently in place.

BUCKNELL BISON LEADERSHIP ACADEMY: In 2011-12, the Department of Athletics launched the Bucknell Bison Leadership Academy. This program is designed to help student-athletes learn how to be effective leaders on and off the playing fields. The Leadership Academy features programming and instruction that bridge theory, development and real experiences in an interactive learning environment. Through this endeavor, team leaders can enhance their impact on their teammates' and their program's performance immediately and for years to come.



FACULTY ATHLETICS REPRESENTATIVE: The faculty athletics representative (FAR) is a member of the faculty or administrative staff who is designated to represent Bucknell in its relationships with the NCAA and the Patriot League. Bucknell's FAR is Mitch Chernin, Professor of Biology. The FAR can enhance the student-athlete experience by promoting a balance between academics, athletics and the social lives of student-athletes, which affords them opportunities to enjoy a full range of collegiate experiences.

SIDELINE COACH PROGRAM: This program is a truly unique initiative in Division I college athletics, and it involves the invitation of a member of the faculty, administration, staff or community by one of Bucknell's 27 varsity teams. The participant has the opportunity to discuss the overall program with the respective coaching staff, including practice preparation and strategy for the upcoming contest. The sideline coach attends a practice session and an actual intercollegiate competition, where he/she is introduced to the team and gains rarely seen insight into the relationships that exist between player-coach and player-player. The purpose of the Sideline Coaches Program is to foster a better understanding by the faculty and administration of the roles played by coaches and athletes in the university's competitive intercollegiate athletic arena.

ACADEMIC ENHANCEMENT CENTER: In the Fall of 2005, the Department of Athletics opened a study/computer lab for student-athletes on the concourse level of Sojka Pavilion. The center is outfitted with computers, a laser printer, four television monitors and a projection unit with computer, VCR and DVD player. Additionally, the study lab can be used as a meeting place for group projects, tutorial area or just a secluded and quiet study space before or after practice. In addition, the Department of Athletics owns a number of laptop computers that may be signed out by student-athletes for use on away trips.

STUDENT-ATHLETE ADVISORY COMMITTEE (SAAC): Representatives from each varsity team comprise the SAAC, which is designed to enhance the total student-athlete experience by promoting opportunity, protecting student-athlete welfare, and fostering a positive student-athlete image. The Committee is an invaluable resource for promoting communication between athletics administration and student-athletes; promoting communication between athletics and campus-wide administration; providing feedback and insight, as well as soliciting responses into department issues and proposed NCAA legislation; building a sense of community within the athletics program involving all athletics teams; organizing community service projects and efforts; creating a vehicle for student-athlete representation on campus-wide committees; serving as a collective voice of campus student-athletes; and disseminating information to the student-athlete body. Among the programs the Bucknell SAAC has undertaken in recent years are regular volunteer trips to the Lewisburg Food Bank, and involvement with the "Orange and Blue goes Green" sustainability program.

BISON GOOD SPORTS: Now in its ninth year, Bison Good Sports is a sportsmanship awareness program designed to promote appropriate fan conduct at all Bison sporting events. Bucknell teams have some of the best fan support in the Patriot League, and we encourage all fans to enthusiastically cheer on the Orange & Blue in a positive manner.



NSCAA Scholar All-American
CHRIS THORSHEIM



NFCA All-Region
LIZ WILLS



7x Patriot League Champion
7 School Records
PL All-Academic Team
CHRISTIAN LUPICA



Patriot League Player of Year
NFCA All-Region
KRISTEN ZAHN



GSCAA Scholar All-American
Honorable Mention
LOUIS BEHNEN



Bucknell University
President's Award
(graduated with 4.0 GPA)
MARGOT BOYD



Capital One
Academic All-District
JOE OGBEN

This is Bucknell

Bucknell University is one of the top liberal arts colleges in the nation. Our academic programs encompass:

- ▶ The traditional liberal arts disciplines—arts, humanities, natural sciences and social sciences.
- ▶ Professional programs in accounting, management, education, engineering and music.
- ▶ Preprofessional programs in law and medicine.

With more than 3,500 undergraduates and nearly 150 graduate students, we combine the personal attention of a small college with the resources of a large university.

THE CAMPUS: BEAUTIFUL AND CENTRALLY LOCATED

- ▶ More than 100 facilities for learning, living and recreation.
- ▶ Recent additions: music building, residence hall, geology/psychology building, engineering building and athletics center. The new Holmes Stadium complex at West Fields is home to field hockey, women's lacrosse, and men's and women's soccer.
- ▶ Approximately three hours from Baltimore, New York, Philadelphia and Washington D.C.

ACADEMICS: BROAD LEARNING OPPORTUNITIES

- ▶ More than 50 majors leading to bachelor of arts, bachelor of science, bachelor of science in engineering, bachelor of science in education, bachelor of science in business administration or bachelor of music.
- ▶ **College of Arts & Sciences:** Animal Behavior, Anthropology, Art and Art History, Biology, Cell Biology/Biochemistry, Chemistry, Classics, Comparative Humanities, Computer Science, East Asian Studies, Economics, Education, English, Environmental Geology, Environmental Science, Environmental Studies, French, Geography, Geology, German, History, International Relations, Latin American Studies, Linguistics, Mathematics, Music, Neuroscience, Philosophy, Physics, Political Science, Psychology, Religion, Russian, Sociology, Spanish, Theatre and Dance, Women's and Gender Studies.
- ▶ **School of Management:** Accounting and Financial Management; Global Management; Managing for Sustainability; Markets, Innovation and Design; Management for Engineers.
- ▶ **College of Engineering:** Biomedical, Chemical, Civil, Computer Engineering, Computer Science and Engineering, Electrical, Environmental, Mechanical.
- ▶ **Professional Advising:** Pre-Health Professions, Pre-Law.

THE FACULTY: FOCUSED ON STUDENTS

- ▶ More than 330 full-time faculty.
- ▶ More than 97% of faculty members hold doctoral degrees.
- ▶ Undergraduate learning is highest priority.
- ▶ Faculty members are active scholars who conduct research, produce creative works and publish their findings, often in collaboration with students.

UNDERGRADUATE RESEARCH

- ▶ Students conduct research in the lab and off campus in conjunction with faculty mentors.
- ▶ High degree of independence.
- ▶ Great preparation for graduate school and career.

CAMPUS LIFE: NEVER A DULL MOMENT

- ▶ Learning outside of class: academically oriented student organizations, guest lecturers, campus publications, concerts, art exhibitions, theatre, trips off campus and more.
- ▶ More than 150 student-run organizations to suit nearly every interest, from a capella singing to Zen Buddhist meditation.
- ▶ Volunteer and service projects on- and off-campus, including abroad.
- ▶ 13 fraternities and 6 sororities.
- ▶ Diverse religious life programs.
- ▶ Athletics: Division I varsity intercollegiate program, club sports for both men and women, and intramural programs.

RESIDENTIAL COLLEGES: HOUSING OPTIONS WITH AN ACADEMIC TWIST

- ▶ Seven themed programs open to first-year students: arts, environment, global, humanities, language and culture, social justice, and society and technology.
- ▶ Students take a course together, live together, and participate in out-of-class activities such as informal discussions, guest lectures and off-campus trips.

CAREER SERVICES: PREPARATION FOR THE FUTURE

- ▶ Full- or part-time internships at companies, non-profits or governmental agencies.
- ▶ Resume writing and interviewing guidance.
- ▶ Two-day job shadowing externships.
- ▶ On-campus employment expos and off-campus networking nights.

VISIT CAMPUS: SEE BUCKNELL FOR YOURSELF

- ▶ Tours are offered five times daily on weekdays and three times on Saturdays.
- ▶ No appointment is necessary for tours; other options may require reservations.
- ▶ Please go to www.bucknell.edu/admissions/calendar or call (570) 577-1101 for more information about visit options.
- ▶ To take Bucknell's award-winning virtual tour, visit <http://community.bucknell.edu/>.



Bucknell Athletics Facilities

THE KENNETH LANGONE ATHLETICS & RECREATION CENTER

The Bucknell University Department of Athletics and Recreation prides itself on setting the standard of excellence when it comes to success both on the playing fields and in the classroom. With 18 Patriot League Presidents' Cups in 25 years, national leadership in graduation rates, 128 Academic All-Americans in 45 years and 140 Patriot League Scholar-Athletes in 25 years, Bucknell is clearly at the head of the class in terms of upholding the scholar-athlete model.

The addition of the Kenneth G. Langone Athletics and Recreation Center, one of the finest collegiate athletics and recreation venues of its kind, ensures the continuation of that success.

The facility, which celebrated its 10th birthday in 2012-13, has enhanced each of Bucknell's 27 varsity programs and has greatly expanded the scope of its growing intramural and recreational sports offerings. A visually appealing structure located along Moore Avenue on the "downhill" side of campus, the Langone Athletics and Recreation Center was designed to reach out to all members of the campus community, including the student body, varsity student-athletes, faculty, staff and alumni.

Three primary venues lie within the facility: the Arthur D. Kinney Jr. Natatorium, the 4,000-seat Gary A. Sojka Pavilion and the Krebs Family Fitness Center. Other features include a new location for the Bucknell Athletics Hall of Fame, a display of Bucknell's Congressional Medal of Honor recipients, a brand new display highlighting Bucknell's all-time Academic All-Americans, a sports medicine and athletic training suite, classrooms, modern offices for coaches and staff and increased locker room space for varsity and recreational athletes.

The facility is named in honor of Ken Langone, a 1957 Bucknell graduate who, along with his wife Elaine, pledged \$11 million toward the center's construction. Langone was a member of the university Board of Trustees from 1980 to 1996.

One of the special qualities of the Langone Athletics and Recreation Center is the manner in which it supplements the pre-existing facilities. The construction surrounds Gerhard Fieldhouse and historic Davis Gymnasium, which has been restored as a competition venue for the Bison wrestling and volleyball teams, as well as intramural, recreation and other varsity practice activities.

As Bucknell continues to strive toward its mission of setting the standard of excellence in college athletics, the Langone Athletics and Recreation Center becomes the centerpiece in an already impressive cache of athletics facilities that includes the 13,100-seat Christy Mathewson-Memorial Stadium and its new FieldTurf and 8-lane track surface; the scenic Bucknell Golf Club and brand new Bachman Golf Center; the newly refurbished Depew Field (baseball) and Becker Field (softball); and Emmitt Field and Graham Field at Holmes Stadium, the new portion of the West Fields project that includes covered grandstand seats, ticket and concession areas, team rooms, a training room and a press box area for soccer, field hockey and women's lacrosse.



OTHER ATHLETICS VENUES



1. Sojka Pavilion (M/W basketball); 2. Kinney Natatorium (M/W swimming & diving, M/W water polo); 3. Davis Gym (volleyball, wrestling); 4. Gerhard Fieldhouse (M/W indoor track & field); 5. Emmitt Field at Holmes Stadium (M/W soccer); 6. Christy Mathewson-Memorial Stadium (football, M lacrosse, outdoor track & field); 7. Fieldhouse Courts (M/W Tennis); 8. Becker Field (softball); 9. Depew Field (baseball); 10. Bison River Complex (rowing); 11. Bachman Golf Center; 12. Krebs Fitness Center.

Graham Field at Holmes Stadium



SEATING CAPACITY 1,000

SURFACE: AstroTurf 12XL

IMPACT: Dedicated on Sept. 21, 2003 after being built in spring and summer of 2003

IMPROVED: In 2007 to add the Holmes Stadium facility: covered bleacher seating, team rooms, a training room, concession and ticket areas, press box and viewing suites, public rest rooms and visitor seating areas

NAMESAKE: Named in honor of lead donor William Graham '62

DIMENSIONS: Installed by SRI Sports, Inc., the synthetic turf field is a mono-filament nylon 6.6 fiber knitted system that is 240' by 372'. The entire field is placed over a free draining Dynamic Stone base with additional sub drainage. The turf surface is equipped with an underground manual irrigation system.

OTHER: Completely fenced and lighted complex



WHAT IT MEANS TO BE A BISON

“... the pursuit of athletics in college need not interfere with a fellow’s studies, and if you give a boy a well-developed body his brain will get the benefit of it.”

– Christy Mathewson, in his book *Won in the Ninth*, written in 1910

The term “student-athlete” signifies something extraordinary on the campus of Bucknell University.

Being a Bison means that you have the rare blend of physical skills along with the drive and passion needed to succeed at the highest level of collegiate athletics.

Being a Bison also means that you are a scholar first and foremost. You believe that values associated with Division I athletics, such as time management, leadership, teamwork and grace under pressure, are but a part of a well-rounded college experience.

At Bucknell, our students, faculty and staff pride themselves as national leaders in upholding the scholar-athlete ideal that balances a challenging academic program with the demands of successful Division I athletics.

Being a Bison means that you have pledged to be a student-athlete in the purest sense. In doing so, you will be rewarded for a lifetime.



Sam Rickels made the Patriot League Academic Honor Roll with a perfect 4.0 GPA in 2015. The Bison placed 77% of the roster on the Academic Honor Roll.

BISON LOOK TO MOVE UP IN PATRIOT LEAGUE IN 2016



GRETCHEN RICHTER

As the Bucknell women's lacrosse team looks to make a move up the Patriot League standings in 2016, head coach Randall Swope feels she has a squad that can rely on three "Ds": defense, draws and diversified scoring.

The Bison return all of their defensive starters this spring in addition to a very promising first-year goalie; they have one of the Patriot League's premier draw specialists; and while they don't bring back a high-volume scorer, they should have a balanced offensive attack that can score goals in a variety of ways.

Defensively, junior Lucia Smircich, a 2014 Second Team All-Patriot League selection, joins senior Rennie Tankersley, junior Annie Gilbertson and sophomores Katherine Doyle and Erika Stube in what should be a cohesive group of stoppers. All five started at least eight games last year. Smircich and Gilbertson are team co-captains, and Swope feels that the minutes that this unit has played together will help make it one of the league's strongest this spring.

"Our defense is a smart, synchronized group," said Swope. "Everyone is so committed to one another. The fall season was critical for them to have the chance to play in front of a freshman goalie. The communication has been great, and I am very excited to see them perform this season."

That first-year netminder is Jamie DeWitt, who has been impressive since she stepped onto campus in the fall.

"When we first recruited Jamie, I thought she had the potential to be one of the top goalies in the country," praised Swope. "She is just a sponge back there. Technically, she is one of the best goalies I've seen, and that will be tested once we start the games. She is always focused, and she fits in well with our veteran defense."



MADDY MOLINARI

Junior Elizabeth Duswalt is back after studying abroad in the fall, and she will back up DeWitt in goal. Sophomore Corley Simons and freshmen Annie Collett and Eleanor Hagan are young defenders looking to play their way into the lineup.

Sophomore Gretchen Richter was one of the Patriot League's top newcomers last season, when she earned Second Team All-Patriot League honors after obliterating the school record for draw controls with 84 (the previous record was 58). Richter ranked second in the conference and 10th nationally in draw controls, and she also pumped in 26 goals to go with four assists.

"Gretchen is one of the most complete players on our team," said Swope. "She hates to lose and loves to learn. She has really worked hard to develop different draw techniques. She had a great freshman year, and we expect big things from her again this season."

Richter's primary responsibility is to hand the ball to an offensive unit that should be deep and balanced this season. Last year's team scoring leader, junior co-captain Maddy Molinari, had 38 points on 28 goals and 10 assists in 2015. She can play both midfield and attack, and will once again be a key playmaker.

Two other senior co-captains in Sam Rickels and Ally Furbay are also expected to be mainstays in the midfield. Rickels tallied 12 goals last season, while Furbay had eight. Sophomore Mary Margaret Kenney started 13 games as a first-year middie last season, and she is strong in a two-way role.

Rounding out the midfield are junior Becca Golding, sophomore Amy Collins and freshmen Callie DeWitt and Meg Nolen.

"One of our goals this year is to transition

the ball quicker up the field," said Swope. "Our fitness level and athleticism is much better, and we want to be able to move the ball up the field and score goals in transition. We have better depth in the midfield, and we are strong on draw controls."

Senior Emily Becker has developed from a former walk-on to one of the team's strongest players at attack. Becker has 10 career goals in a reserve role, and now she will be leaned upon to be a key goal-scorer for the Bison. Junior Christina Manis is a strong finisher and feeder — she had 14 goals and a team-high 16 assists last season — and second-year attacker Eve Lukowski will also be in the rotation. Sophomore Sarah Galzerano is working her way back from injury, while juniors Courtney Burke and Bridget Shaffrey as well as freshman Audrey Walsh give Bucknell good depth at the attack position.

"We are not returning a big scorer, but we can still score goals without having to rely on one person every game," said Swope. "We can score from a lot of different areas. Our overall lacrosse IQ has increased on offense, and they are clicking well together. It's a real balanced offense."

The Bison will play four games at home (Delaware State, Villanova, Monmouth, Winthrop) and four on the road (Mount St. Mary's, Manhattan, Saint Francis (Pa.), Wagner) in non-league play in February and March.

The Patriot League is now at a full 10 teams for women's lacrosse, as Army West Point enters its first year of varsity play. Bucknell will host the Black Knights on March 26. The top six teams in the regular-season standings will qualify for the Patriot League Tournament, with the semifinals and championship games to be played May 6-8 at the home of the top seed.

"Even though we did not meet our expectations last year, I truly believe we have the ability to get one of those postseason berths this season," said Swope. "The talent is there and we have the depth. Hopefully we can get some wins early in the season and build momentum for league play."



LUCIA SMIRICICH



EMILY BECKER • 34
POMPANO BEACH, FLA.
5-10 • SR • ATK

Year	GP	G	A	P	GB	DC	CT
2013	9	3	1	4	2	0	1
2014	8	3	2	5	8	1	1
2015	8	4	2	6	2	0	0
Total	25	10	5	15	12	1	2

In 2015: Appeared in eight games as a reserve attacker and tallied four goals and two assists ... scored two goals in a game for the first time in her career against Colgate ... added a goal and an assist against American and Lafayette ... **In 2014:** Played in eight games off the bench and recorded three goals and two assists ... scored goals against Marist, Duquesne and Howard ... assists came against Navy and Howard ... picked up eight ground balls, with a high of three against Navy ... **In 2013:** Appeared in nine games as a reserve midfielder and recorded three goals and an assist ... scored against a pair of nationally ranked opponents in Stony Brook and Johns Hopkins ... also tallied against Lehigh ... handed out an assist against Presbyterian ... added two ground balls and a caused turnover ... **Personal/H.S.:** Born Jan. 4, 1994 in Coral Springs, Fla. ... parents are Nick and Barbara Becker ... has four brothers, Nick, Will, Matthew and Michael ... Nick is a quarterback at Union College ... father played football and baseball at Juniata ... earned five varsity letters in lacrosse, four in basketball and one in soccer at Pine Crest School in Fort Lauderdale, Fla. ... in lacrosse was a team captain, Honorable Mention All-American and national All-Academic selection ... four-time all-county and all-district and three-time all-state pick ... named Player of the Year three times by the *Miami Herald* and twice by the *Sun-Sentinel* ... scored 69 goals as a senior, leading her team to the state playoffs for the second year in a row ... three-year member of the WDNT National Team ... majoring in biology ... member of 2015 Patriot League Academic Honor Roll ... **Randall Swope on Becker:** "Emily is the strongest of our true attackers. She has good acceleration out of 1v1 dodges. I am really excited to see what she can give us this year. She has the potential to have a big senior year."



EMILY BECKER



COURTNEY BURKE • 28
HUNTINGTON, N.Y.
5-6 • JR • ATK

Year	GP	G	A	P	GB	DC	CT
2014	4	0	0	0	0	0	1
2015	10	2	0	2	1	0	0
Total	14	2	0	2	1	0	1

In 2015: Saw action in 10 games off the bench and recorded two goals ... scored first career goal against Manhattan, and later added another against Winthrop ... attempted six shots ... **In 2014:** Played in four games as a reserve attacker ... appearances came against Stony Brook, Colgate, Duquesne and Howard ... caused a turnover against Howard ... **Personal/H.S.:** Born May 3, 1995 in Mineola, N.Y. ... daughter of Colin and Jeanne Burke ... has two siblings, an older sister Katelyn and younger brother Colin ... cousins Brian, Sean and Kieran Burke have all played lacrosse at North Carolina ... another cousin, Timmy Burke, plays at Dartmouth ... earned four varsity letters in field hockey and three in lacrosse at Cold Spring Harbor High School ... named lacrosse team's Unsung Hero as a senior ... captained the field hockey team ... was all-county in as a junior and senior and all-conference as a sophomore in field hockey ... majoring in psychology ... **Randall Swope on**

Burke: "Courtney is one of our most creative attackers. Her footwork is very good, and she can score in many different ways. She has improved quite a bit, and I hope she is ready to give us some more minutes this year."



COURTNEY BURKE



AMY COLLINS • 10
WAXHAW, N.C.
5-7 • SO • MID

Year	GP	G	A	P	GB	DC	CT
2015	1	0	0	0	0	0	0
Total	1	0	0	0	0	0	0

In 2015: Appeared in one game as a freshman middle ... action came against Navy ... **Personal/H.S.:** Born Nov. 25, 1996 in Fort Wayne, Ind. ... parents are Doug and Joanne Collins ... has one brother, Ryan ... father played at Ball State and was her high school coach ... in first three seasons of high school lacrosse piled up 277 goals, 93 assists, 360 points, 255 ground balls and 152 forced turnovers ... set a state record with 124 goals and 40 assists as a junior in 2013 ... had a 14-goal game and a 15-assist game ... three-time First Team All-State, All-Regional and All-Union County selection ... NCHSAA and *Charlotte Observer* state player of the year in 2013 ... also 2013 *Enquirer-Journal* Player of the Year ... US Lacrosse High School All-Academic selection ... Brine All-American ... two-year team captain and team MVP ... major is undeclared ... member of 2015 Patriot League Academic Honor Roll ... **Randall Swope on Collins:** "Amy was not with us in the fall as she was battling an illness. She is working hard to get healthy and get back on the field."



KATHERINE DOYLE • 24
VIENNA, VA.
5-9 • SO • DEF

Year	GP	G	A	P	GB	DC	CT
2015	17	0	0	0	27	7	13
Total	17	0	0	0	27	7	13

In 2015: Starting defender in all 17 games ... ranked second on the team with 27 ground balls and third on the team with 13 caused turnovers ... collected seven draw controls ... picked up four ground balls against American ... had three caused turnovers against both Manhattan and American ... **Personal/H.S.:** Born May 1, 1996 in Arlington, Va. ... parents are George and Laura Doyle ... has three siblings: Matthew, Claire and Tommy ... mother played field hockey and lacrosse at Lafayette ... brother Matthew played baseball at Harvard ... sister Claire attended Bucknell and is a former member of the lacrosse team ... twin brother Tommy plays baseball at Virginia ... has played soccer, basketball and lacrosse at Flint Hill School in Oakton, Va. ... member of DC Metro US Lacrosse National Tournament champion ... US Lacrosse High School All-Academic selection ... earned the soccer team's Husky Award in 2011 and 2012 ... Flint Hill Tip-Off Classic All-Academic Team in 2012 and All-Tournament Team in 2012 and 2013 ... captained the basketball team twice and the soccer team once ... earned the President's Volunteer Service Award, the Jasper P. Home Jr. Memorial Scholarship Award and the Senior Prize, which was awarded by the senior class to one junior ... management major ... member of 2015 Patriot League Academic Honor Roll ... participates

in the Bucknell Bison Leadership Academy ... **Randall Swope on Doyle:** "Katherine is a big part of our defensive unit. I am extremely pleased with how well she has developed. She has really grasped our defensive scheme and is such a good team player. She thrives on that teamwork."



KATHERINE DOYLE



ELIZABETH DUSWALT • 48
DAVIDSONVILLE, MD.
5-6 • JR • GK

Year	GP	GA	GAA	SV	Pct.	W-L
2014	16	189	13.11	100	.346	4-12
2015	17	235	13.97	136	.367	2-15
Total	33	424	13.57	236	.358	6-27

In 2015: Started all 17 games in goal ... finished with 136 saves, a .367 save percentage and a 13.97 goals-against average ... ranked third in the Patriot League in saves per game (8.0) ... recorded double-digit saves six times, with a high of 15 against Johns Hopkins ... had 13 saves against Loyola and 12 each against Villanova and Holy Cross ... allowed season-low seven goals in a 9-7 win over Wagner ... **In 2014:** Started every game in goal as a freshman ... recorded 100 saves (6.3 per game), with a high of 15 against Villanova ... was terrific against Holy Cross with nine saves and seven goals against in Bucknell's 8-7 win ... made a last-second stop to preserve the victory ... finished with a .346 save percentage and 13.11 goals-against average ... **Personal/H.S.:** Born Apr. 7, 1995 in Baltimore ... daughter of Jim and Terri Duswalt ... has two siblings, Kelsey and Andrew ... father played lacrosse and mother was a gymnast at Towson ... lettered in field hockey and lacrosse at South River H.S. ... national All-Academic selection in lax ... led team to county title as a senior ... also part of a state championship field hockey team ... field hockey team captain ... Minds in Motion Scholar-Athlete in both sports ... majoring in international relations and French ... member of 2015 Patriot League Academic Honor Roll ... **Randall Swope on Duswalt:** "Elizabeth is finding her place again after going abroad in the fall. She is more fit than ever, and we're hoping she continues to contribute for us. She has had some strong games over the last two years and she understands our defense."



ELIZABETH DUSWALT



ALLY FURBAY • 26
MASSILLON, OHIO
5-8 • SR • MID

Year	GP	G	A	P	GB	DC	CT
2013	1	0	0	0	0	0	0
2014	3	0	0	0	1	1	0
2015	17	8	2	10	8	9	3
Total	21	8	2	10	9	10	3

Team Captain in 2016 ... In 2015: Played in all 17 games with five starts ... logged eight goals and two assists on the season ... first career goal came in the second game of the season against Manhattan ... scored twice against Holy Cross, including a go-ahead goal with 1:55 left in regulation before the Crusaders rallied to win in overtime ... had a goal and an assist against both Winthrop and Johns Hopkins ... also recorded eight ground balls and nine draw controls ... had three DCs against Columbia ... **In 2014:** Played in three games, coming against Villanova, Duquesne and Howard ... recorded a ground ball and a draw control against Duquesne ... **In 2013:** Saw action in one game as a freshman midfielder ... made debut against Presbyterian ... **Personal/H.S.:** Born Dec. 17, 1993 in North Canton, Ohio ... parents are Jean and Tim Furbay ... has a brother, Tyler, and sister, Morgan ... mother played basketball at Middlebury College ... grandfather played ice hockey at Nichols College ... earned four varsity letters in lacrosse and two in volleyball at Jackson High School ... two-year lacrosse captain ... 2012 Honorable Mention All-American ... second team all-state and first team all-district as a junior and senior ... selected to North Coast Ohio National Team during sophomore and junior years ... voted team MVP as a junior and senior ... majoring in international relations ... member of 2013 and 2015 Patriot League Academic Honor Roll ... **Randall Swope on Furbay:** "Ally is a complete midfielder. It has been a long road for her, and coming back from her knee issues was a struggle. She has turned that around and become one of our stronger midfielders, and I am very excited to have her as a captain."



ALLY FURBAY



SARAH GALZERANO • 16
GARDEN CITY, N.Y.
5-4 • SO • ATK

Year	GP	G	A	P	GB	DC	CT
2015	7	2	1	3	0	0	0
Total	7	2	1	3	0	0	0

2015: Saw action in seven games, including her first career start against American ... scored her first two collegiate goals in that American game ... registered an assist against Lehigh ... **Personal/H.S.:** Born May 25, 1996 in Garden City, N.Y. ... parents are Joseph and Elizabeth Galzerano ... has two siblings, Michael and Katherine ... played lacrosse and soccer at Sacred Heart Academy in Hempstead, N.Y. ... had a nine-goal game for the lacrosse team as part of a 30-goal season in 2013 ... has earned Tri-State and Nassau Country Player of the Week honors ... US Lacrosse High School All-Academic selection ... team captain in soccer ... helped team to Long Island Catholic League runner-up finish in 2013 ... major is undeclared ... **Randall Swope on Galzerano:** "Sarah missed some time in the fall due to illness, but when healthy she gives us very good depth at attack. She is a strong feeder who is working hard to get back on the field."



SARAH GALZERANO



ANNIE GILBERTSON • 43

FAIR HAVEN, N.J.

5-9 • JR • DEF

Year	GP	G	A	P	GB	DC	CT
2014	12	1	0	1	9	1	6
2015	17	0	0	0	19	7	13
Total	29	1	0	1	28	8	19

Team Captain in 2016 ... In 2015: Turned in a strong sophomore year, starting all 17 games on defense ... recorded 19 ground balls and 13 caused turnovers ... picked up a season-high four GBs against Boston University ... **In 2014:** Played in 12 games with four starts as a first-year defender ... scored one goal, coming in a win over Howard ... logged nine ground balls, with a high of three in the 8-7 win over Holy Cross ... forced six turnovers ... **Personal/H.S.:** Born Dec. 20, 1994 in Red Bank, N.J. ... parents are Peter and Julie Gilbertson ... has one brother, Matthew ... father played football at Lafayette ... lettered four times in lacrosse and twice in field hockey at Rumson-Fair Haven Regional High School ... team captain and Defensive Player of the Year as a junior and senior ... named First Team All-Shore as a senior ... majoring in psychology ... **Randall Swope on Gilbertson:** "Annie is probably our strongest one-on-one crease defender. Rarely do opponents run past her and get off a shot."



ANNIE GILBERTSON



BECCA GOLDING • 25

RANCHO PALOS VERDES, CALIF.

5-6 • JR • MID

Year	GP	G	A	P	GB	DC	CT
2014	2	1	0	1	1	1	0
2015	2	1	0	1	2	0	1
Total	4	2	0	2	3	1	1

In 2015: Played in two games as a reserve midfielder ... action came against Johns Hopkins and Boston University ... scored one goal, coming on a free-position attempt against Boston University ... grabbed two ground balls in the Johns Hopkins game ... **In 2014:** Saw action in two games, against Penn State and Howard ... scored her first collegiate goal in the Howard game ... picked up a ground ball against Penn State ... **Personal/H.S.:** Born Aug. 25, 1995 in Boston, Mass. ... daughter of Matthew and Dawn Golding ... has a younger brother, Josh ... father played lacrosse at Trinity College ... grandfather, Robert Hecht, graduated from Bucknell in 1960 ... lettered four times in varsity lacrosse at Palos Verdes High School in California ... 2013 US Lacrosse All-American ... three-time first team all-league ... earned league MVP honors in 2012 ... two-time team MVP ... member of OC/LA Women's National Tournament Team ... named school's Athlete of the Year as a senior ... broke school records for career points, goals and points in a season and goals in a game (9) ... majoring in markets, innovation and design ... member of Patriot League Academic Honor Roll in 2014 and 2015 ... **Randall Swope on Golding:** "Becca is back with us after studying abroad in the fall. Her fitness is terrific. She has enormous endurance, and she has the ability to be part of our midfield rotation as she continues to improve her game."



MARY MARGARET KENNEY • 3

SUMMIT, N.J.

5-4 • SO • MID

Year	GP	G	A	P	GB	DC	CT
2015	15	3	4	7	23	12	6
Total	15	3	4	7	23	12	6

In 2015: Played in 15 games with 13 starts as a first-year midfielder ... collected seven points on three goals and four assists ... had a point in seven different games ... goals came against Loyola, Lafayette and Boston University ... ranked among the team leaders with 23 ground balls, including a season-high five in her debut against Wagner ... had four ground balls and three draw controls against Winthrop ... finished with 12 draw controls and six caused turnovers ... **Personal/H.S.:** Born May 15, 1996 in New Providence, N.J. ... daughter of John and Lizanne Kenney ... has four siblings: John, Evelyn, Grace and Angela ... competed in lacrosse, cross country and winter track at Oak Knoll School ... helped lead lacrosse team to Group 1 state championship in 2013 as well as 2012 and 2013 prep championships ... US Lacrosse High School All-Academic selection ... tallied 30 ground balls, 18 draw controls and three goals in 2013 ... earned Team Dedication Award as a ninth-grader ... winter track team MVP as a sophomore ... two-time team MVP in cross country ... all-conference selection as a junior ... undeclared major ... member of 2015 Patriot League Academic Honor Roll ... **Randall Swope on Kenney:** "Mary Margaret Kenney plays more of a defensive midfield role, which is a great spot for her. She is very fit and can run all day. She worked very hard all winter on her stick skills, which was crucial for her. She trusts herself with the ball more now."



MARY MARGARET KENNEY



EVE LUKOWSKI • 8
ELLICOTT CITY, MD.
5-8 • SO • ATK

Year	GP	G	A	P	GB	DC	CT
2015	13	6	8	14	6	4	4
Total	13	6	8	14	6	4	4

2015: Played in 13 games with five starts as a first-year attacker ... tallied six goals and eight assists on the season ... scored in four straight games against Penn State, Saint Francis, Villanova and Winthrop ... first two-goal game came against Colgate ... also had an assist against the Raiders for a season-high three points ... picked up three ground balls against Davidson ... **Personal/H.S.:** Born Aug. 9, 1996 in Catonsville, Md. ... parents are Thomas and Nancy Lukowski ... has one sister, Britney, who played lacrosse at Savannah College of Art and Design ... played lacrosse, field hockey and basketball at Mount de Sales Academy in Catonsville ... 2013 team MVP and three-year team captain in basketball ... two-year captain in field hockey ... 2013 field hockey Unsung Hero Award ... named to All-Metro field hockey team in 2011 ... ABC News Athlete of the Week ... 2013 recipient of C. Markland Kelly Jr. Award ... management major ... member of 2015 Patriot League Academic Honor Roll ... **Randall Swope on Lukowski:** "Eve is in great shape this year, and she has surpassed our expectations throughout the preseason. After some injury problems last year we are finally seeing her at her best. She is a strong scorer and finisher, and we would like her to become the voice of the offense."



CHRISTINA MANIS



MADDY MOLINARI • 2
MANHASSET, N.Y.
5-4 • JR • MID

Year	GP	G	A	P	GB	DC	CT
2014	16	13	8	21	17	13	15
2015	16	28	10	38	12	3	6
Total	32	41	18	59	29	16	21

Team Captain in 2016 ... In 2015: Led Bucknell in goals (28) and points (38) while playing in 16 of a possible 17 games with 15 starts ... ranked seventh in the Patriot League in shots per game (4.8) ... recorded four-goal games against Villanova and Lafayette ... also had two assists against Lafayette for a career-high six points ... had five-point games against Villanova (4-1-5) and Columbia (3-2-5) ... logged two goals and two assists against Holy Cross ... attempted nine shots against Loyola ... recorded 12 ground balls ... **In 2014:** Team's third-leading scorer with 21 points on 13 goals and eight assists ... scored three goals in her first nine games, then tallied five straight two-goal games against Duquesne, American, Howard, Holy Cross and Lafayette ... recorded season-best four points with two goals and two assists in an 11-10 win over American ... also had two assists against Colgate ... logged 17 ground balls, 13 draw controls and 15 caused turnovers ... forced four turnovers against Lehigh ... named Patriot League Rookie of the Week after the Duquesne/American games ... **Personal/H.S.:** Born Aug. 27, 1995 in Manhasset, N.Y. ... daughter of Jeffrey and Paula Molinari ... has five older siblings, all of whom played college lacrosse: Shane (UMass), Morgan (Notre Dame), Cullen (Georgetown), Terrence (Duke) and Jeff (Harvard) ... three-sport team captain in lacrosse, field hockey and basketball at Manhasset High School ... earned US Lacrosse High School All-America honors in lacrosse ... three-time all-county selection ... four-year scholar-athlete ... two-time recipient of Athletic Performance Award ... also a high school All-American in field hockey, where she was a two-time all-state, two-time All-Long Island and three-time all-county selection ... named Nassau County Player of the Year after leading all of Long Island in scoring ... earned one all-conference citation in basketball ... majoring in psychology ... member of Patriot League Academic Honor Roll in 2014 and 2015 ... **Randall Swope on Molinari:** "Maddy has worked really hard to become a top-notch midfielder both offensively and defensively. She is our best playmaker in the offensive end, and we will again be looking to her to both score and create goals."



EVE LUKOWSKI



CHRISTINA MANIS • 15
MANHASSET, N.Y.
5-7 • JR • ATK

Year	GP	G	A	P	GB	DC	CT
2014	14	9	9	18	4	3	3
2015	17	14	16	30	5	0	3
Total	31	23	25	48	9	3	6

In 2015: Led the Bison in assists (16) and ranked third in points (30) and fourth in goals (14) ... played in all 17 games with 16 starts ... scored four goals along with an assist against Colgate ... had another five-point game with three goals and two assists against Villanova ... handed out a career-high four assists against Saint Francis ... recorded at least one point in 13 of the final 14 games of the season ... **In 2014:** Enjoyed a solid rookie year, posting nine goals and nine assists for 18 points ... ranked fourth on the team in points and third in assists ... best game came against Howard, when she posted a season-high five points on two goals and three assists ... had two goals and an assist against Lehigh, a goal and two assists against Marist and a goal and an assist against Penn State ... **Personal/H.S.:** Born Feb. 17, 1995 in Manhasset, N.Y. ... parents are Peter and Joanne Manis ... has a sister, Maria, who was a rower at Fairfield ... competed in lacrosse and field hockey at Manhasset High School ... helped both teams to county titles ... interdepartmental major ... member of 2015 Patriot League Academic Honor Roll ... **Randall Goldsborough on Manis:** "Christina is a tremendous finisher, especially in transition. That's becoming a big strength for her. She has good eyes for the game and is a very good offensive player."



MADDY MOLINARI



GRETCHEN RICHTER • 6
BRONXVILLE, N.Y.
5-7 • SO • MID

Year	GP	G	A	P	GB	DC	CT
2015	17	26	4	30	25	84	11
Total	17	26	4	30	25	84	11

2015: One of the top newcomers in the Patriot League in 2015 ... earned Second Team All-Patriot League honors ... was one of only three freshmen to be named to the all-league team ... started all 17 games and ranked second in the Patriot League and 10th nationally in draw controls per game (4.94) ... her 84 draw controls crushed the school single-season record ... the previous mark was 58, set by Arriana Sajjad in 2012 ... Richter already ranks eighth on Bucknell's career draw controls list ... recorded 10 DCs against Saint Francis, missing Bonnie Buechel's school single-game record by one ... finished second on the team with 26 goals ... finished the season with back-to-back four-goal games against Columbia and Boston University ... also had hat tricks against Wagner, Davidson and Johns Hopkins ... added four assists for a 30-point season ... ranked third on the team with 25 ground balls ... earned Patriot League Rookie of the Week honors on Feb. 16 ... **Personal/H.S.:** Born May 1, 1996 in New York City ... daughter of Greg and Nina Richter ... has three siblings: Derek, Fritz and Sabina ... lettered four times each in lacrosse and field hockey at Bronxville High School ... team captain in both sports ... three-time all-league and two-time all-section selection in lacrosse ... one of the program's all-time leading scorers ... in field hockey was a two-time all-state and three-time all-league and all-section pick ... team's Rookie of the Year in 2011 and MVP in 2013 ... majoring in management ... **Randall Swope on Richter:** "Gretchen is one of the most complete student-athletes on our team. She hates to lose and loves to learn. She has really worked hard to develop different draw techniques. She had a great freshman year, and we expect big things from her again this season."



GRETCHEN RICHTER



SAM RICKELS • 9
FOREST HILL, MD.
5-8 • SR • MID

Year	GP	G	A	P	GB	DC	CT
2013	17	14	5	19	18	26	4
2014	16	13	3	16	9	6	8
2015	16	12	1	13	23	13	11
Total	49	39	9	48	50	45	23

Team Captain in 2015 and 2016 ... In 2015: Played in 16 games with eight starts as a midfielder ... scored 12 goals and handed out one assist for 13 points ... scored three times in a win over Saint Francis ... added two goals against Manhattan, Winthrop and American ... also logged 23 ground balls, 13 draw controls and 11 caused turnovers ... season-high four ground balls against Villanova ... **In 2014:** Tied for third on the team with 13 goals and also had three assists for 16 points ... recorded a hat trick in a win over Saint Francis ... had two-goal outings against Loyola, Colgate and Lafayette ... tallied a goal and an assist against Johns Hopkins ... logged nine ground balls, with a high of three against Howard ... also forced eight turnovers and collected six draw controls ... **In 2013:** Was Bucknell's top rookie performer ... started every game as an offensive midfielder and tallied 14 goals and five assists for 19 points ... also collected 26 draw controls, 18 ground balls and four

caused turnovers ... first career goal came in season opener against No. 18 Stony Brook ... recorded first career hat trick in season finale at Marist ... had a two-goal game and also handed out an assist in a win over St. Bonaventure ... put together a seven-game goal-scoring streak ... season-high four draw controls against Lehigh ... **Personal/H.S.:** Born Apr. 15, 1994 in Baltimore, Md. ... daughter of Cathy and Donald Rickels ... has an older brother, D.J., who was a three-time Honorable Mention All-America lacrosse player at McDaniel College ... father played soccer at West Chester ... lettered in lacrosse and soccer and captained both teams at Towson High School ... played in senior all-star games in both sports ... earned team's Lacrosse Sportsmanship Award ... team MVP in soccer ... majoring in early childhood education ... member of Patriot League Academic Honor Roll ... invited to attend NCAA Leadership Forum in Providence, R.I., in November 2013 ... member of Bucknell Bison Leadership Academy ... **Randall Goldsborough on Rickels:** "Sam is a very consistent midfielder who makes big contributions at both ends of the field. She has scored some big goals for us, and she really wants to have a big senior year."



SAM RICKELS



BRIDGET SHAFFREY • 23
CHARLOTTESVILLE, VA.
6-1 • JR • ATK

Year	GP	G	A	P	GB	DC	CT
2014	9	3	0	3	2	1	0
2015	3	0	0	0	0	0	0
Total	12	3	0	3	2	1	0

2015: Played in three games off the bench during an injury-plagued sophomore year ... action came against Penn State, American and Johns Hopkins ... **2014:** Played in nine games with two starts ... recorded three goals, two against Penn State and one against Howard ... collected two ground balls against Marist ... **Personal/H.S.:** Born June 22, 1994 in Denver, Colo. ... daughter of Christopher and Kate Shaffrey ... has three siblings: Ellen, Christopher and Isabel ... Ellen played lacrosse at William & Mary ... father played basketball at The Citadel ... mother was a runner and rower at Mount Holyoke ... earned three letters each in lacrosse and basketball at Western Albemarle High School ... 2013 US Lacrosse All-American and Scholar All-American ... participated in Champion All-America Showcase ... first team all-district and all-region as a junior and senior ... team MVP as a senior ... VISAA Athlete of the Year nominee ... W.I.N.S. recipient ... national team member in 2011 and 2012 ... in basketball was a member of the *Daily Progress* Academic Team and also earned the Coaches Award and Warrior Award ... majoring in English/film and media studies ... member of Patriot League Academic Honor Roll in 2014 and 2015 ... **Randall Swope on Shaffrey:** "Bridget has had some injuries along the way, and she continues to develop her style and her niche. Once that happens, she can be a big contributor."



BRIDGET SHAFFREY



CORLEY SIMONS • 14
PURCELLVILLE, VA.
5-10 • SO • DEF

Year	GP	G	A	P	GB	DC	CT
2015	3	0	0	0	0	2	0
Total	3	0	0	0	0	2	0

In 2015: Played in three games off the bench on defense ... appearances came against Winthrop, Loyola and Colgate ... collected two draw controls ... **Personal/H.S.:** Born Apr. 15, 1996 in Fairfax, Va. ... daughter of Steve and Michelle Simons ... has one sister, Gretta ... four-year lacrosse letterwinner at Loudon Valley High School ... two-year captain ... first team all-district and all-region midfielder as a junior ... team MVP ... was all-district honorable mention as a freshman ... in 2013 posted 62 goals and 51 draw controls ... majoring in biology ... **Randall Swope on Simons:** "Corley has been frustrated by some nagging injuries, but she is a tough player and is fighting through it. We have seen some glimpses so far, and when she is 100 percent she has the potential to be very good."



CORLEY SIMONS



LUCIA SMIRCICH • 41
STIRLING, N.J.
5-8 • JR • MID

Year	GP	G	A	P	GB	DC	CT
2014	16	0	0	0	28	4	15
2015	17	0	1	1	30	7	22
Total	33	0	1	1	58	11	37

Team Captain in 2016 ... 2015: Started all 17 games on defense ... led the team in ground balls (30) and caused turnovers (22) ... ranked fifth in the Patriot League in caused turnovers ... recorded three CTs against Wagner and Manhattan ... picked up a career-high six ground balls against Manhattan ... added four each against Villanova and Winthrop ... **2014:** One of the top first-year players in the Patriot League ... played in all 16 games with 15 starts and earned Second Team All-Patriot League honors at season's end ... was one of only three freshmen on the all-league team, and was Bucknell's first rookie all-league pick in eight years ... ranked second on the team with 28 ground balls ... also tallied 15 caused turnovers ... recorded multiple ground balls in a game 11 times ... caused three turnovers against Duquesne ... **Personal/H.S.:** Born Nov. 1, 1994 in Summit, N.J. ... daughter of Mike and Angel Smircich ... has two brothers, Michael and A.J. ... earned four varsity letters in lacrosse and three in basketball at Villa Walsh Academy in Morristown, N.J. ... two-year captain in both sports ... in lacrosse was a four-time all-league and three-time All-Morris County selection ... was team MVP as a senior ... *Daily Record* First Team All-Star in 2013 ... named to ESPNHS Watch List as a senior ... two-time all-conference pick in basketball ... majoring in managing for sustainability ... member of 2015 Patriot League Academic Honor Roll ... member of Bucknell Bison Leadership Academy ... **Randall Swope on Smircich:** "Lucia is the backbone of our defense. She is the voice of our defense and controls the pace of our defense. She is a strong leader and is absolutely critical to our success."



LUCIA SMIRCICH



ERIKA STUBE • 17
MANLIUS, N.Y.
5-9 • SO • DEF

Year	GP	G	A	P	GB	DC	CT
2015	11	1	0	1	23	3	14
Total	11	1	0	1	23	3	14

In 2015: Played in 11 games and started nine on defense ... scored one goal, coming against Lafayette ... tallied 23 ground balls, with a high of five against Loyola in her first start ... recorded 14 caused turnovers ... **Personal/H.S.:** Born Aug. 19, 1996 in Syracuse, N.Y. ... parents are Kraig and Cindy Stube ... has one sister, Annalise ... played field hockey, basketball and lacrosse at Fayetteville-Manlius High School ... in lax was the 2013 Co-Defensive MVP and a CNYCL American First Team defender ... helped lead the field hockey team to a 2013 sectional title and was named to All-CNY team and Section III All-Star Team ... *Syracuse Post Standard* Athlete of the Week on Oct. 16, 2013 ... field hockey team's leading scorer with 14 goals and seven assists in 2013 ... JV and varsity captain in basketball ... majoring in biology ... member of 2015 Patriot League Academic Honor Roll ... **Randall Swope on Stube:** "Erika is back at full strength after being limited in the fall due to injury. She is one of our toughest and most competitive players. She just hates to lose. She will be on the field quite a bit at low defense this year, and she can also run some midfield if needed."



ERIKA STUBE



RENNIE TANKERSLEY • 19
PARKTON, MD.
5-7 • SR • DEF

Year	GP	G	A	P	GB	DC	CT
2013	3	0	0	0	0	0	0
2014	2	0	0	0	0	0	0
2015	10	0	0	0	8	1	1
Total	15	0	0	0	8	1	1

In 2015: Played in 10 games, including her first eight career starts ... was in starting lineup for season opener against Wagner ... tallied eight ground balls, with a high of three against Manhattan ...
In 2014: Played in two games off the bench ... appearances came against Howard and Boston University ...
In 2013: Saw action in three games, against Penn State, Presbyterian and St. Bonaventure ...
Personal/H.S.: Born Aug. 24, 1994 in Towson, Md. ... daughter of Clarke Tankersley ... has two sisters, Hana and Ella ... competed in lacrosse, field hockey and indoor track & field at Hereford High School ... First Team All-Baltimore County selection in lacrosse as a senior ... second on team in ground balls ... two-time all-county honoree in track ... majoring in chemical engineering at Bucknell ...
Randall Swope on Tankersley: "Rennie is one of our most improved players in the program. She has come such a long way and really grasped the concepts of playing crease defense. She has a great head on her shoulders and has done everything that we have asked of her."

BISON NEWCOMERS



ANNIE COLLETT • 20
RANDOLPH, N.J.
5-8 • FR • DEF

Personal/H.S.: Born Dec. 20, 1996 in Morristown, N.J. ... daughter of Douglas and Kelly Collett ... has three older siblings, Michael, John and Maggie ... Doug Collett played football at Bucknell and is a member of the Class of 1982 ... John graduated from Bucknell in 2011 and captained the Bison men's lacrosse team to a Patriot League championship as a senior ... Michael played lacrosse at the U.S. Naval Academy ... Kelly (Class of 1982) and Maggie (Class of 2014) are also Bucknell graduates ... lettered four times in lacrosse and three times in basketball at Villa Walsh Academy in Morristown, N.J. ... two-year team captain in lax ... team MVP as a senior, when she also earned first team all-league and third team all-county honors ... honorable mention *All-Daily Record* ... two-time US Lacrosse All-Academic Team selection ... played in Senior All-Star Game ... earned team's sportsmanship award as a junior while also earning second team all-league honors ... recorded 38 goals and eight assists as a senior ... earned the Villa Walsh Captains United Leadership Award and was a National Girls and Women in Sports Day honoree ... helped team to conference titles in 2012 and 2015 ... team went 52-22 during her four years ... played club lacrosse for T3 North 2015 Black ... in basketball was a Northwest Jersey Athletic Conference First Team All-Star as a senior ... selected for Morris County All-Star Team ... basketball team captain and MVP as a senior ...
Randall Swope on Collett: "Annie is developing very nicely on defense. No matter how hard the workouts are, she always has a smile on her face and is supporting her teammates. She is getting the hang of our defense and adjusting to the college pace, but she has a very bright future."



CALLIE DeWITT • 7
BASKING RIDGE, N.J.
5-4 • FR • MID

Personal/H.S.: Born Jan. 25, 1997 in Summit, N.J. ... daughter of Brian and Deb DeWitt ... twin sister, Jamie, is her teammate at Bucknell ... four-year varsity letterwinner in lacrosse at Ridge High School ... captained the team as a senior ... as a senior was named to the Courier News All-Area Team and First Team All-Skyland Conference ... *Star Ledger* Third Team All-State selection and All-Skyland Team ... US Lacrosse High School All-Academic selection ... helped her team win three straight Somerset County titles (2012-14) and two straight Skyland Conference championships (2013-14) ... team compiled a 53-11 record from 2012-14 ... played club lax for T3 Lacrosse ...
Randall Swope on DeWitt: "We are very excited about Callie. She has made the college adjustment almost seamlessly. She was a defender in high school but we have her playing middle here. She has some of the strongest stick skills on the team, which makes her suited to the midfield."



JAMIE DeWITT • 13
BASKING RIDGE, N.J.
5-1 • FR • GK

Personal/H.S.: Born Jan. 25, 1997 in Summit, N.J. ... parents are Brian and Deb DeWitt ... twin sister, Callie, also plays lacrosse at Bucknell ... four-year varsity letterwinner in lacrosse at Ridge High School ... took over as regular starting goalie as a senior and finished 17-4 with a save percentage over 50% ... Second Team All-Skyland Conference selection as a junior and senior ... member of *Star Ledger* All-Skyland Team as a junior ... helped her team win three straight Somerset County titles (2012-14) and two straight Skyland Conference championships (2013-14) ... team compiled a 53-11 record from 2012-14 ... played club lax for T3 Lacrosse ...
Randall Swope on DeWitt: "When we first recruited Jamie, I thought she had the potential to be one of the top goalies in the country. She is just a sponge back there. Technically, she is one of the best goalies I've seen, and that will be tested once we start the games. She is always focused, and she fits in well with our veteran defense."



ELEANOR HAGAN • 5
HO-HO-KUS, N.J.
5-4 • FR • DEF

Personal/H.S.: Born May 11, 1997 in New York City ... parents are Tom and Joan Hagan ... has two younger siblings, Tommy and Charlotte ... lettered four times in lacrosse and once in tennis at Northern Highlands High School ... captained the lacrosse team as a senior ... three-time all-league selection in lacrosse, including a first team citation in 2015 ... first team all-county selection as a senior ... in 2015 her team set a school record with 21 wins and made its first county championship appearance ... that team had the No. 3 ranked defense according to LaxPower.com ... part of league championship teams in 2012 and 2015 ... recorded 104 goals, 14 assists and 68 ground balls in her career ... was a first team all-league selection in tennis in 2014 while helping her team to league and sectional championships ...
Randall Swope on Hagan: "Eleanor is an extremely hard worker. She is still learning the adjustments to the college game, but it's going well for her. I'm excited to see what her future brings."



MEG NOLEN • 22
DOVER, MASS.
5-6 • FR • MID

Personal/H.S.: Born March 5, 1997 in Braintree, Mass. ... parents are Bruce and Anne Nolen ... twin sister Carly attends Bucknell ... also has a younger brother Jay ... played lacrosse and field hockey all four years at Thayer Academy in Braintree, Mass. ... senior lacrosse season was abbreviated due to injury, but still managed 28 goals, 12 assists, 72 ground balls and a team-high 41 draw controls ... two-time ISL honorable mention ... two-time all-scholastic selection ... team captain in both sports as a senior ... received team offensive MVP honors in field hockey ... played club lacrosse for Mass Elite ... majoring in early childhood education ...
Randall Swope on Nolen: "Meg is working hard to figure out the college game, and she improves every day. We have her in a defensive midfield role, and I am excited about her future."



AUDREY WALSH • 21
NEEDHAM, MASS
5-10 • FR • ATK

Personal/H.S.: Born Sept. 3, 1996 in New Haven, Conn. ... daughter of Brendan and Desiree Walsh ... has younger twin sisters, Gabrielle and Caroline, who have also committed to Bucknell for lacrosse ... played both lacrosse and field hockey at Needham High School ... two-time Bay State First Team All-Star ... named Eastern Mass Girls Lacrosse Association First Team All-Star as a senior ... two-time US Lacrosse All-Academic selection ... *Boston Herald All-Scholastic* honoree ... helped team to four straight Bay State titles ... finished career with 153 goals and 95 assists ...
Randall Swope on Walsh: "Audrey is a complete attacker. She can score and she can feed. She has great vision with the ball. I think she has almost been surprising herself, and that has been fun to watch. She has strong footwork, and I don't think it will be long before she has a permanent place in our attack rotation."



RANDALL SWOPE
HEAD COACH
7th SEASON

Randall (Goldsborough) Swope, a former standout player at the University of Maryland and with the U.S. National Team, is in the fifth year of her second stint as Bucknell's head women's lacrosse coach. Swope previously coached the Bison in 2003 and 2004, leading the team to .500 or better records and berths in the Patriot League Tournament both years, and she returned to the Bucknell sideline prior to the 2012 campaign.

In her first two seasons at Bucknell, Swope coached back-to-back Patriot League Offensive Players of the Year in Suzanne Raffaele and Meredith Wright, as well as a PL Defensive Player of the Year in goalie Nicole Kallis. The Bison finished 8-8 in 2003 and 8-7 in 2004, and in 2003 they defeated Colgate in the Patriot League Tournament semifinals to reach the championship game for the first time in program history.

Swope's 2004 team placed a national-best 10 student-athletes on the IWLCA All-Academic Team, and that squad's 3.43 combined grade-point average was the second-best mark in the nation.

Following the 2004 campaign, Swope departed Bucknell to continue her international playing career while also serving as girls' athletic director and varsity lacrosse and soccer coach at The Bullis School in Potomac, Md. In 2007 she headed west to become assistant women's lacrosse coach and recruiting coordinator at Stanford, where she helped lead the Cardinal to the MPSF championship.

Before returning to Bucknell, Swope had been serving as a physical education and health teacher as well as head girls' lacrosse and soccer coach and assistant basketball coach at Sidwell Friends School in Washington, D.C.

A 1997 Maryland graduate with a degree in kinesiological sciences, Swope was part of three NCAA championship teams in College Park. A student-athlete on the Terrapins lacrosse squad from 1993-96, the four-year starter was a member of Maryland's back-to-back national championship teams in 1995 and 1996. In addition, she served as an assistant



coach for her alma mater when the Terps won their third consecutive national title in 1997.

She went on to serve as an assistant coach at North Carolina in 1998, where she helped the Tar Heels reach the NCAA Final Four. After a one-year stint as lacrosse and soccer coach at her alma mater St. Mary's High School in Annapolis, Md., in the fall of 1999 she earned her first collegiate head coaching position at Division III Franklin & Marshall. While in that role, she led the team to a top-15 national ranking in each season, while also consistently coaching players to regional and national All-America status. She accumulated a 26-22 record with the Diplomats and led her team to two straight Centennial Conference semifinal appearances.

An active participant in national coaching camps and clinics since 1993, Swope has also been heavily involved in lacrosse on the international level. She was a member of the U.S. National Team from 1994-2006 and was part of gold medal-winning U.S. World Cup squad in 2001. Swope, who also played on the soccer team at Maryland, has been a consultant to the Wales national women's lacrosse team, and in 2010 she coached a team with the Rebels Lacrosse Club.

In the summer of 2013, Swope served as an assistant coach with the Haudenosaunee Nation team at the Women's World Cup in Oshawa, Canada. She helped the squad to a seventh-place finish out of 19 teams.

Formerly Randall Goldsborough, she was married to Lindi Swope in August 2015.



JENNA PETRUCELLI
ASSISTANT COACH
1ST SEASON

Jenna Petrucelli, a former All-America attacker at the University of Mary Washington who spent last season as the head coach at Rosemont College, joined the Bucknell women's lacrosse staff as an assistant coach in September 2015.

Petrucelli is a 2014 graduate of Mary Washington, where she earned First Team All-America, Division III Virginia Player

of the Year and Capital Athletic Conference Player of the Year honors as a senior. Petrucelli was a two-time VaSID First Team All-State and IWLCA All-Region performer, first as a midfielder in 2013 and then as an attacker in 2014.

She tallied 74 goals in her senior year, finishing sixth in the nation and first in the Capital Athletic Conference. Petrucelli's career total of 169 goals ranks seventh in program history, and she set school records for goals in a game (10) and draw controls in a season (85). According to player impact rankings on LaxPower.com in 2014, Petrucelli ranked second among all DIII players nationally.

While at Mary Washington, Petrucelli also served as vice president of the Student-Athlete Advisory Committee.

"I could not be more pleased to add Jenna to our coaching staff," said head coach Randall Swope. "Her accomplishments as a student-athlete at UMW are inspirational and unmatched. I'm very impressed with her level of confidence and her drive to be successful at playing and coaching. Her knowledge will add great depth to our offense and draws, and she complements our coaching staff well. I have no doubt that our players will benefit from her experiences both on and off the field."

In addition to her outstanding play at the collegiate level, Petrucelli was selected to the Italian National Team senior training pool, where she participated in the team's first-ever winter training trip in Rome.

Just after graduating magna cum laude with a degree in psychology from Mary Washington, Petrucelli was hired as head women's lacrosse coach at Rosemont College, located in Bryn Mawr, Pennsylvania. Taking over a program that had posted only five wins in its previous five seasons, Petrucelli led the Ravens to four wins and helped produce Rosemont's very first all-conference player in 2015.

Petrucelli also has extensive coaching experience at the club and camp levels, and she is the founder and owner of House of Lax, a New Jersey-based company that organizes clinics designed to develop both lacrosse skills and overall athleticism.



2015 RESULTS

2-15, 0-8 Patriot League

Date	Opponent	BU	OPP	Record
2/10	WAGNER	9	7	1-0
2/14	MANHATTAN	8	12	1-1
2/18	at #10 Penn State	2	17	1-2
2/25	SAINT FRANCIS (Pa.)	13	10	2-2
2/28	at Villanova	9	11	2-3
3/9	at Winthrop	9	19	2-4
3/11	at Davidson	11	12	2-5
3/14	at Navy*	4	21	(0-1 PL) 2-6
3/18	at #16 Loyola*	7	15	(0-2 PL) 2-7
3/21	COLGATE*	12	15	(0-3 PL) 2-8
3/24	LEHIGH*	4	17	(0-4 PL) 2-9
3/28	at American*	6	16	(0-5 PL) 2-10
4/4	at Holy Cross*	(OT) 10	12	(0-6 PL) 2-11
4/8	LAFAYETTE*	11	14	(0-7 PL) 2-12
4/11	#20 JOHNS HOPKINS	5	16	2-13
4/14	at Columbia	10	12	2-14
4/18	BOSTON UNIVERSITY*	9	11	(0-8 PL) 2-15

* Patriot League game

2015 STATISTICAL LEADERS

Player	GP	G	A	P	SH	GB	DC	CT
Maddy Molinari	16	28	10	38	76	12	3	6
Emily Kookogey	13	19	14	33	47	5	2	6
Gretchen Richter	17	26	4	30	56	25	84	11
Christina Manis	17	14	16	30	31	5	0	3
Eve Lukowski	13	6	8	14	15	6	4	4
Sam Rickels	16	12	1	13	30	23	13	11
Ally Furbay	17	8	2	10	15	8	9	3
Mary Margaret Kenney	15	3	4	7	10	23	12	6
Emily Becker	8	4	2	6	12	2	0	0
Claire Switala	7	5	0	5	13	1	0	1
Caroline Collins	13	3	0	3	10	3	32	2
Cori Thielemann	9	3	0	3	7	10	6	3
Sarah Galzerano	7	2	1	3	3	0	0	0
Courtney Burke	10	2	0	2	6	1	0	0
Becca Golding	2	1	0	1	1	2	0	1
Chloe Chou	3	1	0	1	1	1	0	0
Erika Stube	11	1	0	1	1	23	3	14
Lucia Smircich	17	0	1	1	0	30	7	22
Arriana Sajjad	3	0	0	0	2	1	0	0
Carly Downs	3	0	0	0	2	0	0	0
Katherine Doyle	17	0	0	0	1	27	7	13
Elizabeth Duswalt	17	0	0	0	0	22	1	2
Charlotte O'Donnell	1	0	0	0	0	2	0	1
Annie Gilbertson	17	0	0	0	0	19	7	13
Bridget Shaffrey	3	0	0	0	0	0	0	0
Rennie Tankersley	10	0	0	0	0	8	1	1
Alex Wallace	2	0	0	0	0	0	0	0
Corley Simons	3	0	0	0	0	0	2	0
Amy Collins	1	0	0	0	0	0	0	0
Blair McDonald	9	0	0	0	0	9	4	3
BUCKNELL	17	139	63	202	339	268	197	126
OPPONENTS	17	237	109	346	475	329	204	185

Goalie	GP	SV	GA	GAA	SV%	W	L
Charlotte O'Donnell	1	2	2	7.54	.500	0	0
Elizabeth Duswalt	17	136	235	13.97	.367	2	15
BUCKNELL	17	138	237	13.87	.368	2	15
OPPONENTS	17	102	139	8.13	.423	15	2

2015 PATRIOT LEAGUE STANDINGS

Team	League	Pct.	Overall	Pct.
Loyola	8-0	1.000	17-5	.773
Navy	6-2	.750	15-5	.750
Colgate	6-2	.750	10-6	.625
Boston U.	5-3	.625	8-10	.444
Lehigh	4-4	.500	9-8	.529
Holy Cross	3-5	.375	4-14	.222
American	2-6	.250	4-12	.250
Lafayette	2-6	.250	4-13	.235
Bucknell	0-8	.000	2-15	.118

Patriot League Tournament Quarterfinals

#4 Boston University 8, #5 Lehigh 7

#3 Navy 17, #6 Holy Cross 5

Patriot League Tournament Semifinals

#1 Loyola 14, #4 Boston University 7

#3 Navy 16, #2 Colgate 7

Patriot League Championship

#1 Loyola 14, #3 Navy 9

NCAA Tournament

Loyola 21, Bryant 3

Loyola 19, Boston College 12

Syracuse 10, Loyola 7

2015 ALL-PATRIOT LEAGUE TEAM

Major Awards

Offensive Player of the Year: Annie Thomas, Loyola (Sr., A)

Midfield Player of the Year: Taryn VanThof, Loyola (Sr. M)

Defensive Player of the Year: Maddy Leshner, Loyola (So., D)

Rookie of the Year: Haley O'Hanlon, Colgate (Fr., M)

Coach of the Year: Heather Young, Colgate

First-Team All-Patriot League

Attack: Megan Ark, Colgate (Sr.); Loren Generi, Navy (Sr.); Annie Thomas, Loyola (Sr.); Hannah Schmitt, Loyola (Sr.). **Midfield:** Jenna Collins, Navy (Fr.); Kendall Garden, Lehigh (Jr.); Jill Horka, Boston University (Jr.); Haley O'Hanlon, Colgate (Fr.); Laura Ryan, Holy Cross (Sr.); Taryn VanThof, Loyola (Sr.). **Defense:** Jenna Frost, Colgate (Sr.); Sarah George, Navy (Sr.); Maddy Leshner, Loyola (Jr.); Lauren Willcox, Lehigh (Sr.). **Goalkeeper:** Jennie Berglin, Colgate (Sr.)

Second-Team All-Patriot League

Attack: Kara Burke, Loyola (Sr.); Mallory Collins, Boston University (Jr.); Katie Gallagher, Navy (Jr.); Allison LaBeau, Lehigh (So.); Kirsten Wilhelmsen, Lafayette (So.). **Midfield:** Terese Buechli, American (Jr.); Bailey Mathis, Loyola (So.); Charlotte Rath, Lafayette (So.); **Gretchen Richter, Bucknell (Fr.)**. **Defense:** Jersey Burns, Holy Cross (Jr.); Siobhan McCarthy, Boston University (Sr.); Lizzy Rullan, Navy (Jr.); Kelly Scott, Lehigh (Sr.); Rachel Siciliano, Colgate (Sr.). **Goalkeeper:** Annie Foky, Navy (Sr.); Caroline Meegan, Boston University (So.); Molly Wolf, Loyola (Jr.)



Gretchen Richter earned Second Team All-PL honors as a freshman in 2014.

GOALS

GAME

10	Sue Gray vs. Northeastern, 4/13/84
7	Madison Hurwitz vs. St. Bona., 4/9/13
7	M. Montefusco vs. Niagara, 3/30/02
7	Heidi Hammes vs. Davidson, 4/19/98
7	Cindy Freishtat vs. F&M, 4/30/85
7	Sue Gray vs. Bloomsburg, 5/3/83
7	Anne Kennedy vs. Dickinson, 4/23/79
6	(19 times, last Katelyn Miller vs. Howard, 4/1/14)

SEASON

1.	Sue Gray	52	1984
2.	Sue Gray	47	1983
3.	Michelle Manion	45	1989
4.	Bonnie Buechel	44	2009
5.	Jen Kangas	42	1995
6.	Suzanne Raffaele	40	2003
	Heidi Hammes	40	1997
8.	Katelyn Miller	39	2013
9.	Arriana Sajjad	38	2012
	Michelle Manion	38	1986

CAREER

1.	Suzanne Raffaele	144	2000-03
2.	Michelle Manion	140	1986-89
3.	Bonnie Buechel	129	2006-09
4.	Heidi Hammes	128	1996-99
5.	Sue Gray	127	1981-84
	Katelyn Miller	127	2011-14
7.	Julia Braun	116	2008-11
8.	Carol Donohue	107	2007-10
9.	Ashley Evans	99	1998-01
10.	Leigh Owens	97	1992-95

ASSISTS

GAME

8	Carol Donohue vs. Wagner, 4/15/08
7	Pam Brooks vs. N'eastern, 4/13/84
6	Lindsey Ferro vs. Howard, 4/1/14
6	Sarah Collins vs. American, 4/22/06
6	Meredith Wright vs. Denver, 4/3/04
6	M. Montefusco vs. Stanford, 3/19/99
5	Carol Donohue vs. Howard, 4/11/10
5	M. Montefusco vs. Niagara, 3/30/02
5	Leslie Why vs. Georgetown, 3/18/89
5	Molly Ford vs. Howard, 2/19/11
5	Molly Ford vs. Manhattan, 4/12/11

SEASON

1.	Carol Donohue	36	2008
2.	Meredith Wright	27	2003
3.	Melissa Montefusco	26	2002
4.	Leslie Why	24	1989
5.	Meredith Wright	23	2004
	Melissa Montefusco	23	2001
7.	Madison Hurwitz	22	2013
8.	Lindsey Ferro	21	2012
9.	Sarah Collins	20	2007
	Dorie Ellwood	20	1991

CAREER

1.	Carol Donohue	78	2007-10
2.	Melissa Montefusco	72	1999-02
3.	Meredith Wright	56	2001-04
4.	Katelyn Miller	50	2011-14
5.	Sarah Collins	47	2006-08
6.	Madison Hurwitz	43	2010-13
7.	Bonnie Buechel	42	2006-09
	Heidi Hammes	42	1996-99
	Leslie Why	42	1989-92
10.	Pam Brooks	39	1983-86

POINTS

GAME

13	Carol Donohue vs. Wagner, 4/15/08
12	M. Montefusco vs. Niagara, 3/30/02
12	Sue Gray vs. Northeastern, 4/13/84
11	Meredith Wright vs. Denver, 4/3/04
10	Sarah Collins vs. American, 4/22/06
9	Katelyn Miller vs. St. Bona., 4/9/13

9	Madison Hurwitz vs. Howard, 4/3/13
9	Julia Braun vs. Howard, 4/11/10
9	Carol Donohue vs. Howard, 4/11/10
9	Carol Donohue vs. Lafayette, 3/15/08
9	Cindy Freishtat vs. Bloom., 4/30/85
8	(10 times, last A. Sajjad vs. Liberty., 3/21/12)

SEASON

1.	Carol Donohue	71	2008
2.	Sue Gray	62	1984
3.	Sue Gray	60	1983
4.	Michelle Manion	56	1989
5.	Carol Donohue	54	2009
	Bonnie Buechel	54	2009
	Meredith Wright	54	2004
8.	Katelyn Miller	52	2013
9.	Arriana Sajjad	51	2012
	Melissa Montefusco	51	2002
	Ashley Evans	51	2001

CAREER

1.	Carol Donohue	185	2007-10
2.	Katelyn Miller	177	2011-14
3.	Suzanne Raffaele	173	2000-03
4.	Bonnie Buechel	171	2006-09
5.	Heidi Hammes	170	1996-99
6.	Michelle Manion	163	1986-89
7.	Sue Gray	153	1981-84
8.	Julia Braun	143	2008-11
9.	Ashley Evans	132	1998-01
10.	Madison Hurwitz	129	2010-13

GROUND BALLS

GAME

8	M. Montefusco vs. Monmouth, 3/18/00
8	Paige Brewster vs. Stanford, 3/20/00
8	Lizzy McDaniel vs. Harvard, 3/28/04
8	Julia Braun vs. Lehigh, 3/7/09
7	(10 times, last A. Wendling vs. St. Bonaventure, 4/9/13)

SEASON

1.	Amy Hasler	49	2002
2.	Julia Braun	46	2009
	Lauren Deitrich	46	2006
4.	Bonnie Buechel	45	2009
	Melissa Montefusco	45	2002
6.	Krista Gerhard	42	2000
	Melissa Montefusco	42	2000
8.	Lauren Deitrich	40	2007
	Katie Hartsock	40	2007
	Paige Brewster	40	2000

CAREER

1.	Amy Hasler	150	2001-04
2.	Lauren Deitrich	144	2005-08
3.	M. Montefusco	142	1999-02
4.	Bonnie Buechel	135	2006-09
5.	Julia Braun	132	2008-11
6.	Katelyn Miller	131	2011-14
7.	Rachel Prowler	120	2003-06
8.	Lizzy McDaniel	104	2003-06
9.	Lauren Kremer	99	2004-07
10.	Erin Curtis	98	1999-02

* Ground balls kept since 1999

DRAW CONTROLS

GAME

11	Bonnie Buechel vs. St. Francis, 4/18/07
10	Gretchen Richter vs. St. Francis, 2/15/15
8	Katelyn Miller vs. Howard, 4/3/13
8	Katelyn Miller vs. Presbyterian, 3/5/12
8	Julia Braun vs. Lehigh, 3/7/09
8	Julia Braun vs. Ohio State, 3/28/08
8	Bonnie Buechel vs. Wagner, 4/12/07

SEASON

1.	Gretchen Richter	84	2015
2.	Arriana Sajjad	58	2012
3.	Adrienne Wendling	54	2012
4.	Katelyn Miller	51	2012
	Bonnie Buechel	51	2007

6.	Caroline Collins	49	2014
7.	Julia Braun	48	2010
	Bonnie Buechel	48	2008
9.	Bonnie Buechel	47	2009
10.	Julia Braun	45	2009

CAREER

1.	Bonnie Buechel	164	2006-09
2.	Julia Braun	160	2008-11
3.	Katelyn Miller	139	2011-14
4.	A. Wendling	116	2010-13
	Lauren Deitrich	110	2005-08
6.	Sophie Kleinert	109	2011-14
7.	Caroline Collins	99	2012-15
8.	Lauren Kremer	93	2004-07
9.	Andrea Paraud	85	2002-05
10.	Gretchen Richter	84	2015-pr.

* Draw controls kept since 2001

CAUSED TURNOVERS

GAME

6	Lauren Deitrich vs. R. Morris, 3/3/07
6	Katelyn Miller vs. GW, 3/3/12
5	Rachel Prowler vs. Villanova, 4/8/06
5	Lauren Deitrich vs. Lafayette, 4/21/07
5	Bonnie Buechel vs. Le Moyne, 4/5/09
5	Katelyn Miller vs. Villanova, 3/1/14

SEASON

1.	Lauren Deitrich	43	2007
2.	Katelyn Miller	33	2014
3.	Lauren Deitrich	31	2008
4.	Bonnie Buechel	30	2009
5.	Jennifer Gianis	27	2001
6.	Lauren Deitrich	26	2006
7.	Amy Hasler	25	2002
8.	Julia Braun	27	2009
9.	Katelyn Miller	24	2013
	Katelyn Miller	24	2012
	Lauren Kremer	24	2007

CAREER

1.	Lauren Deitrich	116	2005-08
2.	Katelyn Miller	101	2011-14
3.	Bonnie Buechel	78	2006-09
4.	Julia Braun	76	2008-11
5.	Amy Hasler	68	2001-04
6.	Lauren Kremer	58	2004-07
7.	A. Wendling	55	2010-13
8.	Rachel Prowler	52	2003-06
9.	Catherine Barry	50	2006-09
	Jennifer Gianis	50	1999-02

* Caused turnovers kept since 2001

SAVES

GAME

29	Becky Bittinger vs. Gettysburg, 5/6/82
27	Becky Bittinger vs. Delaware, 5/5/84
26	Kathy Kline vs. Lehigh, 5/2/80
25	Kahra Foster vs. Lehigh, 4/13/91
25	Susan Lang vs. Towson, 4/11/88
24	(3 times, last N. Kallis vs. Lafayette, 3/23/02)

SEASON

1.	Susan Lang	271	1988
2.	Kahra Foster	228	1991
3.	Susan Lang	215	1989
4.	Alyson Toombs	209	1995
5.	Alyssa DeLorenz	205	2011
6.	Becky Bittinger	204	1984
7.	Susan Lang	201	1987
8.	Kahra Foster	200	1990
9.	Nicole Kallis	197	2002
10.	Susan Lang	188	1986
	Becky Bittinger	188	1983

CAREER

1.	Susan Lang	875	1986-89
2.	Nicole Kallis	711	2000-03
3.	Alyssa DeLorenz	689	2008-11
4.	Alyson Toombs	677	1994-97

SAVE PCT.

SEASON

1.	Becky Bittinger	.632	1982
2.	Becky Bittinger	.624	1984
3.	Nicole Kallis	.624	2000
4.	Nicole Kallis	.617	2001
5.	Nicole Kallis	.604	2002
6.	Annie Richards	.604	1999
7.	Kathy Kline	.602	1980
8.	Annie Richards	.593	2000
9.	Kahra Foster	.586	1992
10.	Susan Lang	.580	1988

CAREER

1.	Becky Bittinger	.608	1982-84
2.	Nicole Kallis	.602	2000-03
3.	Annie Richards	.574	1998-01
4.	Alyson Toombs	.552	1994-97
5.	Kahra Foster	.551	1989-92
6.	Susan Lang	.521	1986-89
7.	Lizzy McDaniel	.491	2003-06

GAA

SEASON

1.	Alyson Toombs	7.72	1997
2.	Kahra Foster	8.13	1992
3.	Annie Richards	8.54	1999
4.	Nicole Kallis	8.54	2002
5.	Nicole Kallis	8.59	2001
6.	Nicole Kallis	8.79	2003
7.	Annie Richards	8.87	1998
8.	Nicole Kallis	9.77	2000
9.	Lizzy McDaniel	9.81	2006
10.	Susan Lang	10.06	1989

CAREER

1.	Nicole Kallis	8.87	2000-03
2.	Annie Richards	9.26	1998-01
3.	Alyson Toombs	10.62	1994-97
4.	Lizzy McDaniel	10.77	2003-06
5.	Kahra Foster	12.81	1989-92
6.	Susan Lang	13.05	1986-89
7.	Alyssa DeLorenz	13.36	2008-11

* GAA kept since 1986
Minimum 450 minutes for season list and 1,200 minutes for career list



BONNIE BUECHEL

ALL-TIME RESULTS

Year	W	L	T
2015	2	-	0
2014	4	-	0
2013	5	-	0
2012	5	-	0
2011	3	-	0
2010	2	-	0
2009	9	-	0
2008	6	-	0
2007	7	-	0
2006	7	-	0
2005	4	-	0
2004	8	-	0
2003	8	-	0
2002	6	-	0
2001	7	-	0
2000	6	-	0
1999	5	-	0
1998	10	-	0
1997	13	-	0
1996	6	-	0
1995	6	-	0
1994	2	-	0
1993	3	-	0
1992	7	-	0
1991	4	-	0
1990	1	-	0
1989	4	-	0
1988	3	-	0
1987	4	-	0
1986	2	-	0
1985	3	-	0
1984	9	-	0
1983	5	-	0
1982	3	-	1
1981	2	-	0
1980	2	-	0
1979	3	-	0
1978	3	-	2
Total:	189	-	3

ALL-AMERICA/ALL-REGION SELECTIONS

All-Mid-Atlantic Region

Bonnie Buechel	2009 (Second Team)
Ashley Evans	2003 (Second Team)
Heidi Hammes	1998 (Second Team)

CoSIDA Academic All-Americans

Alyssa DeLorenz	2011 (First Team)
Amy Green	1997 (Second Team)
Susan Lang	1989 (Third Team)

CoSIDA Academic All-District

Alyssa DeLorenz	2011
Alyssa DeLorenz	2009
Amy Green	1997
Susan Lang	1989

IWLCA Scholar-Athlete of Year

Katelyn Miller	2014
----------------	------

PATRIOT LEAGUE SCHOLAR-ATHLETE OF YEAR

Katelyn Miller	2014
Katelyn Miller	2013
Katelyn Miller	2012
Alyssa DeLorenz	2011
Alyssa DeLorenz	2009
Suzanne Raffaele	2003
Amy Green	1997
Tricia Way	1994
Tricia Way	1993

ALL-PATRIOT LEAGUE HONORS

YEAR	NAME
2015	Gretchen Richter (Second Team)
2014	Katelyn Miller, Lucia Smircich (Second Team)
2013	Katelyn Miller (Second Team)
2012	Katelyn Miller (Second Team)
2011	Alyssa DeLorenz (Second Team)
2010	Julia Braun (Second Team)
2009	Bonnie Buechel, Alyssa DeLorenz (First Team); Julia Braun (Second Team)
	Alyssa DeLorenz (Goalie of the Year)
2008	Bonnie Buechel, Lauren Deitrich, Carol Donohue (Second Team)
2007	Bonnie Buechel (First Team); Lauren Deitrich (Second Team)
2006	Bonnie Buechel, Rachel Prowler, Sarah Collins, Lauren Kremer, Lauren Deitrich (First Team)
	Lizzy McDaniel (Second Team); Rachel Prowler (Defensive Player of Year)
2005	Rachel Prowler, Emily Burman (First Team); Katie Edge, Andrea Paraud (Second Team)
2004	Katie Edge, Rachel Prowler, Meredith Wright (First Team); Lauren Nuss (Second Team)
	Meredith Wright (Offensive Player of Year)
2003	Suzanne Raffaele, Nicole Kallis (First Team); Amy Hasler (Second Team)
	Suzanne Raffaele (Offensive Player of Year); Nicole Kallis (Defensive Player of Year)
2002	Suzanne Raffaele, Melissa Montefusco (First Team); Nicole Kallis (Second Team)
2001	Ashley Evans (First Team); Nicole Kallis, Melissa Montefusco, Suzanne Raffaele (Second Team)
2000	Ashley Evans, Melissa Montefusco, Erin Curtis, Suzanne Raffaele, Nicole Kallis (Second Team)
	Suzanne Raffaele (Rookie of Year)
1999	Lauren Coyne (First Team); Heidi Hammes, Lis Murphy (Second Team)
1998	Heidi Hammes, Liz Murphy
1997	Heidi Hammes, Liz Murphy
1996	Amy Green, Deb Mandelbaum
1995	Laura Hagen, Jen Kangas, Leigh Owens; Laura Hagen (Defensive Player of Year)
1994	Laura Hagen, Tricia Way; Amy Green (Rookie of Year)
1993	Alison Arth, Tricia Way, Lisa Young
1992	Dori Ellwood, Tricia Way, Leslie Why
1991	Kristina Haas, Leslie Why

ALL-EAST COAST CONFERENCE HONORS

YEAR	NAME
1990	Leslie Why
1989	Michelle Manion
1986	Michelle Manion, Heidi Zoller
1985	Sue Ramage
1984	Sue Ramage
1983	Sue Gray, Jeanne Minihan

NORTH-SOUTH GAME PARTICIPANTS

YEAR	NAME
2006	Lizzy McDaniel, Rachel Prowler
2003	Suzanne Raffaele
1997	Kate McIvain
1995	Jen Kangas

PATRIOT LEAGUE ALL-ACADEMIC TEAM

YEAR	NAME
2014	Sophie Kleinert, Katelyn Miller
2013	Madison Hurwitz, Katelyn Miller
2012	Lindsey Ferro, Katelyn Miller
2011	Alyssa DeLorenz



ALL-TIME SERIES RECORDS

OPPONENT	W	L	T	FIRST GAME	LAST GAME	STK
American	6	15	0	3/16/94 (W 16-8)	3/28/15 (L 16-6)	L1
Binghamton	3	1	0	2/28/06 (W 10-8)	4/14/12 (W 16-12)	W1
Bloomsburg	9	1	0	4/13/78 (W 6-0)	4/28/00 (W 15-8)	W6
Boston College	0	1	0	3/24/92 (L 7-4)	3/24/92 (L 7-4)	L1
Boston University	1	2	0	3/31/96 (W 12-8)	4/18/15 (L 11-9)	L2
California	0	1	0	3/14/01 (L 12-11 OT)	3/14/01 (L 12-11 OT)	L1
UC Davis	0	2	0	3/15/06 (L 13-5)	3/28/07 (L 13-2)	L2
Colgate	3	33	0	4/13/81 (L 5-3)	3/21/15 (L 15-12)	L13
Columbia	2	11	0	4/26/97 (W 12-4)	4/14/15 (L 12-10)	L10
Cornell	1	11	1	4/18/78 (T 5-5)	4/30/98 (L 15-4)	L1
Dartmouth	0	1	0	3/22/86 (L 17-4)	3/22/86 (L 17-4)	L1
Davidson	5	1	0	3/22/95 (W 16-5)	3/11/15 (L 12-11)	L1
Delaware	0	11	0	4/21/81 (L 17-3)	4/14/90 (L 8-1)	L11
Denver	1	1	0	3/13/03 (L 11-8)	4/3/04 (W 23-7)	W1
Dickinson	5	0	0	4/24/78 (W 11-1)	4/27/83 (W 14-8)	W5
Drexel	9	21	0	4/17/83 (W 8-6)	3/6/11 (L 19-3)	L10
Duke	0	1	0	2/4/12 (L 25-3)	2/4/12 (L 25-3)	L1
Duquesne	2	10	0	3/8/97 (W 18-2)	3/25/14 (L 16-5)	L7
East Stroudsburg	3	0	0	4/17/91 (W 17-8)	4/15/93 (W 21-11)	W3
Fairfield	1	0	0	3/13/02 (W 11-6)	3/13/02 (W 11-6)	W1
Franklin & Marshall	3	4	0	4/15/78 (L 13-5)	4/20/85 (W 11-10)	W2
Georgetown	5	4	0	3/22/87 (W 7-6)	4/2/95 (L 16-5)	L2
George Mason	0	1	0	3/1/13 (L 12-8)	3/1/13 (L 12-8)	L1
George Washington	0	2	0	3/3/12 (L 15-7)	3/3/13 (L 11-9)	L2
Gettysburg	3	0	0	4/8/78 (W 8-7)	5/5/83 (L 9-7)	L1
Harvard	1	1	0	3/28/04 (L 18-8)	3/30/05 (W 11-8)	W1
Hofstra	5	8	0	4/16/83 (W 9-8)	4/23/95 (L 18-10)	L7
Holy Cross	14	12	0	3/23/91 (W 14-2)	4/4/15 (L 12-10 OT)	L1
Howard	6	0	0	3/2/04 (W 16-6)	4/1/14 (W 22-8)	W6
Johns Hopkins	0	3	0	2/23/13 (L 19-4)	4/11/15 (L 16-5)	L3
Kutztown	0	3	1	4/29/78 (T 6-6)	4/29/81 (L 10-7)	L3
Lafayette	5	32	0	4/22/78 (L 6-2)	4/8/15 (L 14-11)	L6
La Salle	3	1	0	4/17/02 (L 12-1)	3/25/08 (W 16-10)	W3
Lehigh	11	27	0	5/3/78 (L 10-3)	3/24/15 (L 17-4)	L6
Le Moyne	1	2	0	4/6/05 (W 15-10)	3/31/10 (L 12-3)	L2
Liberty	1	0	0	3/21/12 (W 16-15 OT)	3/21/12 (W 16-15 OT)	W1
Lock Haven	10	4	1	4/7/81 (L 4-3)	4/21/99 (W 17-3)	W5
Long Island	2	0	0	3/12/07 (W 18-5)	3/5/08 (W 17-5)	W2
Longwood	0	1	0	2/27/05 (L 14-5)	2/27/05 (L 14-5)	L1
Loyola	0	11	0	4/3/82 (L 18-5)	3/18/15 (L 15-7)	L11
Manhattan	2	2	0	3/22/07 (W 12-6)	2/14/15 (L 12-8)	L2
Marist	1	3	0	3/16/98 (W 18-5)	3/12/14 (L 10-5)	L3
UMBC	4	8	0	4/4/87 (L 13-5)	2/23/07 (L 13-5)	L1
Monmouth	3	4	0	3/27/96 (W 15-10)	4/2/02 (W 9-6)	W1
Mount St. Mary's	5	0	0	3/29/88 (W 22-4)	3/16/11 (W 12-11)	W5
Navy	0	8	0	4/12/08 (L 18-11)	3/14/15 (L 21-4)	L8
New Hampshire	0	1	0	4/4/99 (L 8-5)	4/4/99 (L 8-5)	L1
Niagara	2	0	0	4/1/01 (W 9-6)	4/1/01 (W 9-6)	W2
North Carolina St.	1	0	0	3/30/89 (W 14-4)	3/30/89 (W 14-4)	W1
Northeastern	1	1	0	4/13/84 (W 18-2)	4/26/86 (L 13-11)	L1
Ohio	1	0	0	3/20/01 (W 9-8)	3/20/01 (W 9-8)	W1
Ohio State	1	3	0	4/18/99 (L 12-3)	3/28/08 (W 18-17)	W1
Old Dominion	0	1	0	3/26/91 (L 15-7)	3/26/91 (L 15-7)	L1
Penn State	0	16	0	5/2/85 (L 15-3)	2/18/15 (L 17-2)	L16
Presbyterian	2	0	0	3/5/12 (W 21-8)	3/12/13 (W 20-7)	W2
Richmond	0	5	0	3/27/86 (L 14-8)	4/9/95 (L 16-15)	L5
Robert Morris	2	3	0	3/3/07 (L 9-8)	2/27/11 (L 9-5)	L2
Rutgers	1	11	0	4/13/86 (L 14-3)	3/23/05 (L 18-1)	L6
St. Bonaventure	2	5	0	2/13/11 (L 14-10)	4/9/13 (W 17-9)	W1
Saint Francis (Pa.)	8	1	0	3/2/02 (W 15-0)	2/25/15 (W 13-10)	W4
Saint Joseph's	6	0	0	4/22/95 (W 15-8)	3/28/00 (W 13-6)	W6
Saint Mary's	1	0	0	3/16/01 (W 8-6)	3/16/01 (W 8-6)	W1
Shippensburg	7	9	0	4/11/78 (L 11-5)	4/2/98 (W 16-11)	W3
Slippery Rock	1	3	0	4/15/81 (L 8-6)	4/28/91 (W 15-11)	W1
Springfield	0	1	0	3/26/92 (L 11-8)	3/26/92 (L 11-8)	L1
Stanford	2	1	0	3/21/97 (W 11-7)	3/11/01 (L 15-10)	L1
Stony Brook	0	2	0	2/16/13 (L 20-5)	2/15/14 (L 18-1)	L2
Swarthmore	1	0	0	4/19/80 (W 10-4)	4/19/80 (W 10-4)	W1
Towson	2	10	0	4/20/84 (W 8-7)	3/12/95 (L 7-5)	L1
Villanova	5	12	0	4/30/89 (L 12-9)	2/28/15 (L 11-9)	L2
Virginia	0	2	0	4/3/95 (L 21-4)	3/23/86 (L 18-4)	L2
Virginia Tech	0	4	0	3/20/98 (L 18-3)	3/25/06 (L 6-5)	L4
Wagner	7	3	0	3/10/02 (L 12-6)	2/10/15 (W 9-7)	W1
William & Mary	0	2	0	3/24/86 (L 21-3)	4/3/87 (L 18-5)	L2
Winthrop	0	1	0	3/9/15 (L 19-9)	3/9/15 (L 19-9)	L1

ALL-TIME RESULTS

Year	Score	W	L	T
1978 (3-4-2)				
4/8	Gettysburg	W	8	7
4/11	Shippensburg	L	5	11
4/13	at Bloomsburg	W	6	0
4/15	at Franklin & Marshall	L	5	13
4/18	Cornell	T	5	5
4/22	at Lafayette	L	2	6
4/24	Dickinson	W	11	1
4/29	Kutztown	T	6	6
5/3	at Lehigh	L	3	10
1979 (3-6)				
4/10	at Shippensburg	L	6	17
4/17	at Cornell	L	5	10
4/23	at Dickinson	W	16	1
4/26	at Kutztown	L	7	8
4/27	Franklin & Marshall	W	6	5
5/2	Bloomsburg	W	7	2
5/3	Lehigh	L	7	16
5/7	Lafayette	L	5	10
5/14	at Gettysburg	L	4	9
1980 (2-5)				
4/10	Shippensburg	L	7	18
4/12	at Franklin & Marshall	L	5	15
4/19	Swarthmore	W	10	4
4/24	at Lafayette	L	3	10
4/26	Kutztown	L	4	9
5/2	at Lehigh	L	3	13
5/9	Gettysburg	W	9	8
1981 (2-9)				
3/26	Lehigh	L	1	11
4/7	at Lock Haven	L	3	4
4/9	at Shippensburg	L	5	12
4/11	Franklin & Marshall	L	8	9
4/13	Colgate	L	3	5
4/15	Slippery Rock	L	6	8
4/21	at Delaware	L	3	17
4/27	at Dickinson	W	11	6
4/29	at Kutztown	L	7	10
5/5	Bloomsburg	W	18	6
5/7	at Gettysburg	L	4	6
1982 (3-7-1)				
3/30	at Lehigh	L	6	13
4/1	at Slippery Rock	L	9	11
4/3	at Loyola	L	5	18
4/12	Lock Haven	T	11	11
4/17	at Colgate	L	4	16
4/20	Delaware	L	1	13
4/22	at Lafayette	L	4	11
4/27	Shippensburg	W	9	5
4/30	Dickinson	W	13	6
5/4	at Bloomsburg	L	6	7
5/6	Gettysburg	W	12	7
1983 (5-8, 2-3 ECC)				
4/5	Slippery Rock	L	8	13
4/12	at Shippensburg	L	10	14
4/13	Franklin & Marshall	L	5	16
4/16	Hofstra*	W	9	8
4/17	Drexel*	W	8	6
4/19	at Delaware*	L	6	17
4/21	Lafayette*	L	4	15
4/23	Lehigh*	L	4	17
4/27	at Dickinson	W	14	8
4/28	at Lock Haven	L	8	13
5/1	Colgate	W	13	8
5/3	Bloomsburg	W	17	9
5/5	at Gettysburg	L	7	9
* ECC game				
1984 (9-6, 3-3 ECC)				
4/1	at Loyola	L	9	16
4/9	Lehigh*	L	2	16
4/10	Shippensburg	W	13	10
4/13	vs. Northeastern^	W	18	2
4/14	at Hofstra*	W	10	9
4/17	Delaware*	L	2	27
4/19	at Lafayette*	L	4	5
4/20	Towson*	W	8	7
4/23	Lock Haven	W	8	2
4/23	at Franklin & Marshall	W	11	6
4/28	at Colgate	L	1	5
4/30	Drexel*	W	9	6
5/1	at Bloomsburg	W	6	5
5/5	vs. Delaware#	L	1	18
* ECC game ^ at Hemptstead, N.Y. # ECC Tournament at Towson, Md.				
1985 (3-11, 0-6 ECC)				
3/30	Lehigh*	L	4	19
4/3	Virginia	L	4	21
4/10	at Shippensburg	W	15	10
4/12	vs. Hofstra*^	L	5	9
4/13	at Drexel*	L	6	16
4/16	at Delaware*	L	6	10
4/18	Lafayette* (OT)	L	9	10
4/20	Franklin & Marshall (OT)	W	11	10
4/22	at Lock Haven	L	7	11
4/25	Towson*	L	4	7
4/27	Colgate	L	2	7
4/28	Loyola	L	6	8
4/30	Bloomsburg	W	14	1
5/2	at Penn State	L	3	15
* ECC game ^ at Philadelphia, Pa.				
1986 (2-14, 1-5 ECC)				
3/18	at Lehigh*	L	3	16
3/22	Dartmouth^	L	4	17
3/23	at Virginia	L	4	18
3/24	at William & Mary	L	3	21
3/27	at Richmond	L	8	14
4/7	at Loyola	L	7	30
4/9	at Towson*	L	12	15
4/12	Hofstra*	W	14	7
4/13	Rutgers	L	3	14
4/15	Delaware*	L	3	25
4/18	Lafayette*	L	11	18
4/19	Drexel*	L	11	20
4/26	Northeastern	L	11	13



KARIN WEGENER KISELY

4/27 at Colgate L 4 15
 4/29 Penn State L 1 27
 5/1 Lock Haven W 16 2
 * ECC game
 ^ at Charlottesville, Va.

1987 (4-9, 2-4 ECC)

3/21 Loyola L 6 14
 3/22 Georgetown W 7 6
 3/24 at Lehigh* L 3 9
 3/27 at Drexel* W 16 8
 4/3 at William & Mary L 5 18
 4/4 UMBC^ L 5 13
 4/8 Towson* L 8 9
 4/11 at Hofstra* W 13 7
 4/12 at Rutgers L 8 15
 4/16 at Lafayette* L 3 21
 4/18 at Delaware* L 2 23
 4/21 at Lock Haven W 9 5
 4/28 at Penn State L 3 17
 * ECC game
 ^ at Williamsburg, Va.

1988 (3-13, 1-5)

3/18 at Loyola L 4 12
 3/19 at Georgetown L 7 9
 3/22 at Lehigh* L 3 20
 3/26 Drexel* L 9 12
 3/28 at Richmond L 7 15
 3/29 at Mount St. Mary's W 22 4
 3/31 at UMBC L 7 12
 4/9 Hofstra* W 7 6
 4/10 Rutgers L 7 8
 4/11 at Towson* L 4 12
 4/14 Lafayette* L 2 18
 4/16 Delaware* L 3 15
 4/19 at Lock Haven W 8 6
 4/23 at Colgate L 5 17
 4/24 at Cornell L 0 6
 4/26 Penn State L 2 24
 * ECC game

1989 (4-14, 0-6 ECC)

3/18 Georgetown W 9 4
 3/19 Loyola L 2 19
 3/30 at North Carolina State W 14 4
 4/1 Lehigh* L 2 12
 4/3 Mount St. Mary's W 20 3
 4/6 Towson* L 4 14
 4/8 at Hofstra* L 2 11
 4/9 at Rutgers L 7 8
 4/13 at Lafayette* L 4 22
 4/15 at Delaware* L 4 18
 4/16 at Shippensburg L 12 14
 4/18 Lock Haven W 8 6
 4/22 Colgate L 7 17
 4/23 Cornell L 5 6
 4/25 at Penn State L 2 24
 4/29 at Drexel* L 10 14
 4/30 at Villanova L 9 12
 5/3 UMBC L 9 10
 * ECC game

1990 (1-15, 0-6 ECC)

3/17 at Georgetown L 2 8
 3/18 at Loyola L 2 14
 3/21 Shippensburg L 5 13
 3/31 at Lehigh* L 4 16
 4/5 at Towson* L 2 7
 4/7 Hofstra* L 6 7
 4/8 Rutgers L 4 8
 4/12 Lafayette* L 4 15
 4/14 Delaware* L 1 8
 4/17 at Lock Haven L 3 6

4/21 at Colgate L 4 15
 4/22 at Cornell L 5 14
 4/24 Penn State L 1 14
 4/28 Drexel* L 9 11
 4/29 Villanova L 3 5
 5/2 at UMBC W 9 7
 * ECC game

1991 (4-13, 1-3 PL)

3/17 Loyola L 4 17
 3/20 at Shippensburg L 11 12
 3/23 Holy Cross* W 14 2
 3/26 at Old Dominion L 7 15
 3/28 at Richmond L 6 11
 4/4 Towson L 6 19
 4/6 Lafayette* L 7 20
 4/11 Georgetown W 8 7
 4/13 at Lehigh* L 4 15
 4/14 at Hofstra L 5 10
 4/17 East Stroudsburg W 17 8
 4/19 at Villanova L 7 9
 4/23 at Colgate* L 7 11
 4/27 at Drexel L 7 12
 4/28 Slippery Rock W 15 11
 5/1 UMBC L 10 11
 5/4 Cornell L 4 14
 * Patriot League game

1992 (7-9, 1-3 PL)

3/21 at Holy Cross* W 6 5
 3/24 at Boston College L 4 7
 3/26 at Springfield L 8 11
 3/28 at Rutgers W 8 5
 4/2 at Towson L 4 11
 4/4 at Lafayette* L 3 14
 4/8 at Cornell L 4 14
 4/11 Lehigh* L 6 8
 4/12 Hofstra L 8 9
 4/15 at East Stroudsburg W 12 1
 4/18 Villanova W 9 8
 4/21 Colgate* L 8 9
 4/23 at Georgetown W 11 7
 4/25 Drexel L 7 13
 4/27 Shippensburg W 10 1
 4/29 at UMBC W 8 7
 * Patriot League game

1993 (3-10, 1-3 PL)

3/13 at Villanova L 6 8
 3/28 at Cornell L 2 15
 3/30 Rutgers L 7 9
 4/1 Towson L 5 18
 4/3 Lafayette* L 10 16
 4/9 Holy Cross* W 11 5
 4/10 at Lehigh* L 8 14
 4/15 East Stroudsburg W 21 11
 4/17 Georgetown W 10 7
 4/20 at Colgate* L 8 17
 4/24 at Drexel L 7 19
 4/25 at Hofstra L 9 13
 4/28 UMBC L 12 13
 * Patriot League game

1994 (2-12, 0-4 PL)

3/11 at Villanova (OT) L 12 13
 3/16 at American W 16 8
 3/20 at Richmond L 8 14
 3/22 at Towson (OT) W 10 9
 3/26 at Holy Cross* L 12 13
 4/2 at Lafayette* L 1 19
 4/4 at Rutgers L 3 16
 4/7 at Cornell L 10 13
 4/9 Lehigh* L 8 13
 4/17 at Georgetown L 2 18

4/19 Colgate* L 15 19
 4/23 Drexel L 10 12
 4/24 Hofstra L 8 14
 4/27 at UMBC L 6 18
 * Patriot League game

1995 (6-10, 2-2 PL)

3/12 at Towson L 5 7
 3/16 at Shippensburg L 10 12
 3/18 at Lock Haven W 10 9
 3/22 at Davidson W 16 5
 3/25 Holy Cross* W 10 2
 3/26 Rutgers L 3 8
 3/29 Cornell L 5 11
 4/1 Lafayette* L 8 14
 4/2 Georgetown L 5 16
 4/8 at Lehigh* L 12 14
 4/9 Richmond L 15 16
 4/15 at Colgate* W 12 11
 4/18 at Drexel L 11 15
 4/22 St. Joseph's W 15 8
 4/23 at Hofstra L 10 18
 4/27 UMBC W 13 12
 * Patriot League game

1996 (6-8, 1-3 PL)

3/12 at Cornell L 5 16
 3/21 Lock Haven W 14 6
 3/23 at St. Joseph's W 13 5
 3/24 at Rutgers L 5 15
 3/27 Monmouth W 15 10
 3/30 at Holy Cross* W 8 7
 3/31 at Boston University W 12 8
 4/3 Shippensburg W 14 11
 4/6 at Lafayette* L 4 10
 4/13 Lehigh* L 6 18
 4/16 Colgate* L 9 13
 4/19 at Villanova L 4 17
 4/23 Drexel L 12 13
 4/24 at UMBC L 4 6
 * Patriot League game

1997 (13-3, 2-2 PL)

3/2 at American W 7 6
 3/8 Duquesne W 18 2
 3/11 Cornell W 8 5
 3/21 at Stanford W 11 7
 3/25 at Monmouth W 11 5
 3/27 Holy Cross* W 11 1
 4/2 at Shippensburg W 16 14
 4/5 Lafayette* L 6 13
 4/7 Rutgers L 3 11
 4/12 at Lehigh* W 7 5
 4/13 at Drexel W 6 5
 4/15 at Colgate* L 6 16
 4/19 St. Joseph's W 17 11
 4/21 at Lock Haven W 13 7
 4/23 UMBC W 15 8
 4/26 Columbia W 12 4
 * Patriot League game

1998 (10-5, 2-2 PL)

3/16 Marist W 18 5
 3/20 at Virginia Tech L 3 18
 3/24 Monmouth L 2 8
 3/28 at Holy Cross* W 6 5
 4/2 Shippensburg W 16 11
 4/4 at Lafayette* L 1 8
 4/7 Drexel W 8 4
 4/10 Lehigh* W 10 9
 4/14 Colgate* L 5 7
 4/18 at St. Joseph's W 13 12
 4/19 vs. Davidson^ W 12 8
 4/22 Lock Haven W 10 6



JEN KANGAS

4/25 American W 12 9
 4/28 Bloomsburg W 18 8
 4/30 at Cornell L 4 15
 ^ at Philadelphia, Pa.
 * Patriot League game

1999 (5-8, 1-4 PL)

3/20 at Monmouth L 6 11
 3/23 St. Joseph's W 5 1
 3/25 Villanova L 7 10
 3/27 Holy Cross* L 9 10
 3/31 at Bloomsburg W 9 5
 4/3 Lafayette* L 8 11
 4/4 New Hampshire L 5 8
 4/8 at Drexel W 9 6
 4/10 at Lehigh* W 9 8
 4/14 at Colgate* L 8 14
 4/18 Ohio State L 3 12
 4/21 at Lock Haven W 17 3
 4/24 at American L 7 12
 * Patriot League game

2000 (6-7, 2-3 PL)

3/12 at Ohio State L 0 17
 3/14 at Duquesne L 8 12
 3/18 Monmouth L 3 9
 3/20 Stanford W 10 9
 3/25 at Villanova L 10 11
 3/28 at St. Joseph's W 13 6
 4/1 at Holy Cross* W 10 9
 4/5 Drexel W 7 5
 4/8 at Lafayette* L 5 13
 4/15 Lehigh* W 12 3
 4/19 Colgate* L 8 19
 4/28 Bloomsburg W 15 8
 4/30 at Columbia L 8 9
 * Patriot League game

2001 (7-8, 2-3 PL)

3/3 at American L 8 13
 3/11 at Stanford L 10 15
 3/14 at California (OT) L 11 12
 3/16 at Saint Mary's (Calif.) W 8 6
 3/20 Ohio W 9 8
 3/23 at Colgate* L 10 16
 3/24 vs. Duquesne^ L 7 10
 3/31 Holy Cross* L 9 11
 4/1 Niagara W 9 6
 4/4 at Monmouth L 2 9
 4/7 Lafayette* (OT) L 8 9
 4/14 Villanova* W 13 5
 4/17 Columbia W 13 7

4/21 at Lehigh* W 11 7
 4/22 at Drexel (2OT) W 11 10
 ^ at Hamilton, N.Y.
 * Patriot League game

2002 (6-9, 1-5 PL)

3/2 Saint Francis (Pa.) W 15 0
 3/6 Mount St. Mary's W 10 4
 3/9 at Columbia L 7 13
 3/10 at Wagner L 6 12
 3/13 at Fairfield W 11 6
 3/16 American* L 5 9
 3/21 Lehigh* W 13 8
 3/23 at Lafayette* L 5 6
 3/30 at Niagara W 17 9
 4/2 Monmouth W 9 6
 4/6 at Holy Cross* (OT) L 9 10
 4/9 Drexel L 7 8
 4/13 at Colgate* L 11 16
 4/17 at La Salle L 1 12
 4/20 Villanova* L 6 10
 * Patriot League game

2003 (8-8, 3-3 PL)

3/8 Columbia L 5 6
 3/10 vs. Wagner^ W 12 9
 3/13 at Denver L 8 11
 3/15 at American* L 9 13
 3/22 Lafayette* L 7 8
 3/26 at Lehigh* W 11 3
 3/29 Holy Cross* W 10 6
 4/1 at Mount St. Mary's W 8 7
 4/5 at Duquesne L 10 11
 4/9 at Saint Francis (Pa.) W 18 5
 4/12 at Colgate* L 6 9
 4/16 La Salle W 15 6
 4/19 Villanova* W 12 8
 4/22 at Drexel L 9 11
 4/26 vs. Colgate# W 13 9
 4/27 at American# L 6 15
 ^ at Denver, Colo.
 # PL Tournament at Washington, D.C.
 * Patriot League game

2004 (8-7, 4-2 PL)

3/2 Howard W 16 6
 3/6 Wagner W 18 7
 3/11 Virginia Tech L 7 13
 3/13 American* L 8 9
 3/15 vs. Columbia^ L 6 11
 3/20 at Lafayette* W 16 9
 3/27 at Holy Cross* W 12 9
 3/28 at Harvard L 8 18
 4/3 Denver W 23 7
 4/6 at La Salle W 5 4
 4/10 Colgate* L 9 17
 4/17 at Villanova* W 15 8
 4/21 Drexel L 11 13
 4/24 Lehigh* W 14 9
 5/1 vs. American# L 3 17
 ^ at West Palm Beach, Fla.
 # PL Tournament at Hamilton, N.Y.
 * Patriot League game

2005 (4-12, 2-4 PL)

2/27 at Longwood L 5 14
 3/4 at Penn State L 3 19
 3/6 at Columbia L 8 14
 3/11 Lafayette* W Fft.
 3/13 at Drexel L 7 15
 3/18 at Wagner L 5 9
 3/20 Holy Cross* W 9 7
 3/23 at Rutgers L 1 18
 3/26 at Virginia Tech L 6 16

3/30 Harvard W 11 8
 4/2 at Colgate* L 4 14
 4/6 Le Moyne W 15 10
 4/9 Villanova* L 8 9
 4/16 at Lehigh* L 7 9
 4/20 St. Bonaventure L 9 14
 4/23 at American* L 8 14
 * Patriot League game

2006 (7-10, 3-3 PL)

2/28 Binghamton W 10 8
 3/4 Davidson W 14 12
 3/7 Penn State L 5 19
 3/9 at Lafayette* L 6 8
 3/13 vs. Columbia^ L 4 15
 3/15 at UC Davis L 5 13
 3/19 at Holy Cross* L 8 16
 3/25 Virginia Tech (OT) L 5 6
 3/28 Drexel L 7 11
 4/1 Colgate* L 3 13
 4/4 at St. Bonaventure L 8 14
 4/8 at Villanova* W 13 4
 4/12 Wagner W 13 5
 4/15 Lehigh* W 15 5
 4/18 at Saint Francis (Pa.) W 17 3
 4/22 American* W 14 5
 4/29 at Holy Cross# L 7 13
 ^ at Davis, Calif.
 # PL Tournament at Worcester, Mass.
 * Patriot League game

2007 (7-9, 2-3 PL)

2/23 at UMBC L 5 13
 2/28 at Penn State L 6 19
 3/3 Robert Morris L 8 9
 3/12 vs. Long Island^ W 18 5
 3/18 at Duquesne W 11 9
 3/22 Manhattan W 12 6
 3/24 at Lehigh* W 13 12
 3/28 UC Davis L 2 13
 3/31 at Colgate* L 9 13
 4/3 at Drexel L 6 17
 4/7 Holy Cross* L 6 16
 4/12 Wagner W 19 12
 4/14 at American* L 6 17
 4/18 Saint Francis (Pa.) W 23 5
 4/21 Lafayette* W 21 11
 4/22 Ohio State L 4 17
 ^ at Wellington Beach, Fla.
 * Patriot League game

2008 (6-8, 1-5 PL)

3/5 Long Island W 17 5
 3/8 American* L 9 16
 3/15 at Lafayette* W 20 11
 3/20 Duquesne L 9 12
 3/22 at Holy Cross* L 6 16
 3/25 at La Salle W 16 10
 3/28 at Ohio State W 18 17
 3/30 at Robert Morris W 15 14
 4/1 Drexel L 12 16
 4/5 Colgate* L 12 14
 4/12 at Navy* L 11 18
 4/15 at Wagner W 19 13
 4/19 Lehigh* (2OT) L 10 11
 4/23 at Columbia L 7 8
 * Patriot League game

2009 (9-9, 4-2 PL)

2/19 Wagner W 14 5
 2/21 at Davidson W 9 8
 2/25 at Penn State L 5 18
 3/1 Robert Morris W 9 7
 3/7 at Lehigh* (3OT) W 12 11

3/11 at Duquesne L 10 20
 3/14 at American* W 6 4
 3/18 Binghamton W 8 7
 3/21 Lafayette* W 14 11
 3/25 at Drexel L 8 13
 3/28 Holy Cross* W 12 11
 4/1 St. Bonaventure W 21 16
 4/5 vs. Le Moyne (OT)^ L 9 10
 4/11 at Colgate* L 7 12
 4/14 Marist L 9 14
 4/18 Navy* L 7 8
 4/24 at Colgate# L 11 15
 4/28 Columbia L 14 15

^ at Syracuse, N.Y. (Onondaga CC)

PL Tournament at Hamilton, N.Y.

* Patriot League game

2010 (2-15, 0-6 PL)

2/16 Penn State L 2 15
 2/21 Davidson W 8 7
 2/24 at Wagner L 11 12
 2/28 at Robert Morris L 8 10
 3/3 at Columbia L 8 16
 3/7 Drexel L 11 13
 3/12 Lehigh* L 2 13
 3/14 Duquesne L 8 15
 3/20 American* L 13 15
 3/23 vs. St. Bonaventure^ L 6 19
 3/27 at Lafayette* L 10 15
 3/31 Le Moyne L 3 12
 4/3 at Holy Cross* L 7 15
 4/7 at Binghamton L 7 18
 4/11 Howard W 21 8
 4/17 Colgate* L 12 18
 4/24 at Navy* L 4 24
 ^ at Alfred, N.Y.

* Patriot League game

2011 (3-13, 0-6 PL)

2/13 St. Bonaventure L 10 14
 2/19 at Howard W 24 5
 2/27 Robert Morris L 5 9
 3/2 at Penn State L 2 22
 3/6 at Drexel L 3 19
 3/9 Saint Francis (Pa.) L 4 15
 3/12 Navy* L 7 17
 3/16 Mount St. Mary's W 12 11
 3/19 at Lehigh* L 2 19
 3/22 Duquesne L 9 15
 3/26 at American* L 11 20
 4/2 Lafayette* L 11 13
 4/9 Holy Cross* L 7 14
 4/12 Manhattan W 17 11
 4/20 Columbia L 7 16
 4/23 at Colgate* L 7 20

* Patriot League game

2012 (5-12, 0-6 PL)

2/4 at Duke L 3 25
 2/15 Penn State L 3 19
 2/18 at Duquesne L 4 18
 2/25 at Manhattan L 12 13
 3/3 George Washington L 7 15
 3/5 Presbyterian W 21 8
 3/10 at Navy L 11 21
 3/13 at Saint Francis (Pa.) W 21 8
 3/17 Lehigh* L 9 17
 3/21 Liberty (OT) W 16 15
 3/24 American* L 9 22
 3/31 at Lafayette* L 11 14
 4/7 at Holy Cross* L 5 20
 4/10 at St. Bonaventure L 13 15
 4/14 at Binghamton W 16 12

4/21 Colgate* L 8 15
 4/24 Howard W 21 9
 * Patriot League game

2013 (5-12, 1-5 PL)

2/16 Stony Brook L 5 20
 2/20 at Penn State L 2 18
 2/23 at Johns Hopkins L 4 19
 3/1 at George Mason L 8 12
 3/3 at George Washington L 9 11
 3/9 at Colgate* L 7 19
 3/12 at Presbyterian W 20 7
 3/16 Navy* L 3 9
 3/23 at Lehigh* L 8 14
 3/26 Duquesne L 9 18
 3/30 at American* L 6 11
 4/3 at Howard W 22 9
 4/6 Lafayette* L 8 13
 4/9 St. Bonaventure W 17 9
 4/13 Holy Cross* W 10 9
 4/16 Saint Francis (Pa.) W 9 7
 4/20 at Marist L 11 14
 * Patriot League game

2014 (4-12, 2-6 PL)

2/15 at Stony Brook L 1 18
 2/19 Penn State L 9 21
 2/22 at Johns Hopkins L 7 19
 3/1 Villanova L 4 10
 3/8 at Lehigh* L 4 10
 3/12 Marist L 5 10
 3/15 Navy* L 4 15
 3/19 Loyola* L 5 16
 3/22 at Colgate* L 6 16
 3/25 at Duquesne L 5 16
 3/29 American* W 11 10
 4/1 Howard W 22 8
 4/5 Holy Cross* W 8 7
 4/9 at Lafayette* W 9 12
 4/15 at Saint Francis (Pa.) W 13 8
 4/19 at Boston University* L 9 11
 * Patriot League game

2015 (2-15, 0-8 PL)

2/10 Wagner W 9 7
 2/14 Manhattan L 8 12
 2/18 at Penn State L 2 17
 2/25 Saint Francis (Pa.) W 13 10
 2/28 at Villanova L 9 11
 3/9 at Winthrop L 9 19
 3/11 at Davidson L 11 12
 3/14 at Navy* L 4 21
 3/18 at Loyola* L 7 15
 3/21 Colgate* L 12 15
 3/24 Lehigh* L 4 17
 3/28 at American* L 6 16
 4/4 at Holy Cross (OT) L 10 12
 4/8 Lafayette* L 11 14
 4/11 Johns Hopkins L 5 16
 4/14 at Columbia L 10 12
 4/18 Boston University* L 9 11
 * Patriot League game

BUCKNELL ATHLETICS HALL OF FAME

The Bucknell Athletics Hall of Fame was established in 1979 to recognize the very best in the history of Bucknell Athletics. The Hall of Fame now numbers 245 all-time Bison greats. Eight members of the Hall played for the women's lacrosse team.



Suzanne Raffaele '03

Buoyed by a 40-goal season as a senior, Raffaele's 144 career goals eclipsed Michelle Manion's previous school mark that had stood for 14 years. In 2003 she became the sixth player in conference history to earn All-Patriot League honors in all four years of her career. Not only was Raffaele the Patriot League Offensive Player of the Year as a senior in 2003, but she also earned Scholar-Athlete of the Year honors. Entered Hall of Fame with the Class of 2014.



Tricia Way '94

Way was the first woman athlete in Bucknell history to earn all-conference honors five times. She was a three-time All-Patriot League selection in women's lacrosse and a two-time honoree in field hockey. She co-captained the 1993 field hockey team and was a two-year captain in lacrosse. As a midfielder in field hockey, she registered five goals and three assists and was the Patriot League Scholar-Athlete in 1992. Entered Hall of Fame with the Class of 2006.



Margaret Philleo Ricci '79

Ricci was one of Bucknell's top woman athletes of her era, competing in field hockey, basketball and lacrosse. She played four years of lacrosse and as a junior was named to the All-Central Pennsylvania second team. Entered Hall of Fame with the Class of 2002.



Pam Heller Shassian '78

Shassian was one of the pioneers of the women's varsity lacrosse program at Bucknell and served as the team's co-captain her senior year. In addition, she played field hockey and basketball for the Bison. Entered Hall of Fame with the Class of 2000.



Sue Gray Behringer '84

One of the most prolific scorers in Bucknell women's lacrosse history, Behringer graduated with eight school records, including most career goals (127). She was named All-East Coast Conference, and was invited to try out for the U.S. Women's Lacrosse Association national team. She captained both the women's lacrosse and field hockey teams while at Bucknell. Entered Hall of Fame with the Class of 1996.



Kathy Kline Grove '80

A four-year starter in field hockey and member of the women's lacrosse team, Grove was a 1980 nominee for the Broderick Award, which honors the outstanding female collegiate athlete in the country. She still ranks second in Bucknell field hockey history with 46 career goals and 103 career points. Entered Hall of Fame with the Class of 1994.



Barbara Castens-Seidell '79

A co-captain of the basketball and field hockey teams and one of the first two women elected to the Hall of Fame, Castens-Seidell was also a member of the women's lacrosse team at Bucknell. Entered Hall of Fame with the Class of 1985.



Karin Wegener Knisely '79

One of the first two women elected to the Hall of Fame, Knisely was Bucknell's first three-sport (field hockey, basketball and lacrosse) captain in 40 years. She set scoring records in field hockey and lacrosse. Entered Hall of Fame with the Class of 1985.

WOMEN'S LACROSSE CAPTAINS ROSTER

- 2015 Sam Rickels, Claire Switala
- 2014 Char Damico, Andrea Feldman, Elizabeth Gauf, Sophie Kleinert
- 2013 Char Damico, Madison Hurwitz, Sophie Kleinert, Adrienne Wendling
- 2012 Madison Hurwitz, Sophie Kleinert, Adrienne Wendling
- 2011 Julia Braun, Alyssa DeLorenz, Ashley St. John
- 2010 Julia Braun, Carol Donohue, Katie Fox, Kendall Thibeault
- 2009 Catherine Barry, Kendall Thibeault
- 2008 Catherine Barry, Lauren Deitrich
- 2007 Lauren Deitrich, Lauren Kremer, Shauna Weinstein
- 2006 Lauren Kremer, Lizzy McDaniel, Rachel Prowler
- 2005 Annie Greenspun, Amy Lee, Andrea Paraud
- 2004 Amy Hafets, Amy Hasler, Elizabeth Schuster
- 2003 Amy Hafets, Amy Hasler, Nicole Kallis, Suzanne Raffaele
- 2002 Jen Gianis, Melissa Montefusco
- 2001 Ashley Evans, Kari Evans, Annie Richards
- 2000 Krista Gerhard, Maura Narog
- 1999 Lauren Coyne, Elizabeth Murphy, Heidi Hammes
- 1998 Jen Gallagher, Sarah Moosbrugger
- 1997 Amy Green, Megahn Hallahan
- 1996 Laura Hagan, Amy Green
- 1995 Laura Hagan, Jen Kangas
- 1994 Tricia Way, Eliza Wampler
- 1993 Jennifer Hayes, Tricia Way
- 1992 Dori Ellwood, Kahra Foster, Leslie Why
- 1991 Kristina Haas, Lynn Santilli, Julie Goeler
- 1990 Irene Sotiropoulos, Sara Snable
- 1989 Shelly Glowacki, Kari Smith
- 1988 Cindy Dehmel, Jennifer Bates
- 1987 Cindy Dehmel, Heidi Zoller
- 1986 Pam Brooks
- 1985 Sue Ramage, Lauren Strine
- 1984 Becky Bittenger, Sue Gray, Lauren Strine
- 1983 Jeanne Minahan, Maria Procopio
- 1982 Anne Kennedy, Jeanne Minahan
- 1981 Ellen McCahon, Liz Rabenold
- 1980 Kathryn Kline, Elizabeth LeVan
- 1979 Margaret Ricci, Karen Wegener
- 1978 Jean Baker, Pam Heller



Suzanne Raffaele



Rachel Prowler



Lauren Deitrich



Carol Donohue

THE PATRIOT LEAGUE



The Patriot League, which was founded on the principles of admitting athletes who are academically representative of their class, is in its third decade of academic and athletic achievement. Participation in athletics at Patriot League institutions is viewed as an important component of a well-rounded education.

The Patriot League began as a successful Division I-AA (now called Football Championship Subdivision) football conference in 1986. Full League members include American, Army, Boston University, Bucknell, Colgate, Holy Cross, Lafayette, Lehigh, Loyola Maryland and Navy. Associate members include Fordham in football, Massachusetts Institute of Technology in women's rowing, Georgetown in both football and women's rowing, and Richmond in women's golf.

These member institutions are among the oldest and most prestigious in the nation. Alumni from Patriot League colleges and universities have played a leadership role in the shaping of our country.

In the classroom, the Patriot League's full-member institutions, individually and collectively, consistently rank among the top Division I programs in the NCAA Graduation Rates Report. Since 1998, the Patriot League has ranked first among all Division I conferences offering scholarships in student-athlete graduation rates according to the NCAA Graduation Rates report. The League finished at the top spot with 96 percent of its teams reporting a graduation rate of 85 percent or higher in the most recent data. In addition, 90 Patriot League teams earned NCAA Academic Performance Program Public Recognition Awards after posting academic progress rate scores in the top 10 percent of all squads in their respective sports.

League members have also distinguished themselves on the field of play. The Patriot League sponsors championship competition in 24 sports (11 for men; 13 for women). Championship teams from 15 sports are guaranteed advancement into NCAA post-season competition: baseball, men and women's basketball, field hockey, football, men's golf, men and women's lacrosse, rowing, men and women's soccer, softball, men and women's tennis and volleyball.

Along the timeline of Patriot League history about three-quarters of the Patriot League's Scholar-Athletes of the Year also received All-Patriot League status for their exemplary athletic performance. In the Patriot League's history, more than 200 student-athletes have been recognized as CoSIDA Academic All-Americans, while more than 12,000 have qualified for the League's Academic Honor Roll. More than 30 student-athletes have received NCAA Postgraduate Scholarships. Additionally, Patriot League student-athletes have earned Fulbright Scholarships, Rhodes Scholarships, Marshall Scholarships and NACDA/Disney Scholarships.



BUCKNELL BISON LEADERSHIP ACADEMY



As Bison Athletics seeks to create a comprehensive learning environment that meshes with the academic mission of the University, an important element of the complete student-athlete experience is participation in an elite leadership development program designed to identify, develop, challenge and support student-athletes and coaches in their continual quest to become leaders in academics, in athletics and in life.

The Bucknell Bison Leadership Academy was launched in August 2011 with the goal of delivering programming and instruction that bridge theory, development and real experiences in an interactive learning environment. Through this endeavor, team leaders can enhance their impact on their teammates' and their program's performance immediately and for years to come. Leadership Academy programming has evolved and expanded throughout its first five years.

Approximately 60 student-athletes participate in Leadership Academy programming each year. Representing the women's lacrosse team in 2015-16 are Katherine Doyle, Sam Rickels and Lucia Smircich.

Goals for the Bucknell Bison Leadership Academy include:

- Identify and develop high potential leaders in their sophomore or junior years
- Help young best athletes become best leaders
- Create strong leaders by example and set the stage for developing vocal leaders
- Build a strong peer support network for aspiring leaders
- Develop leaders who support and learn from current team captains/leaders
- Practice leading self, their class, and below
- Succession Planning — smoothly replace graduating leaders
- Encourage veteran leaders to step up and be vocal leaders
- Establish a solid, cooperative and ongoing partnership with the coaching staff
- Teach and apply the insights and skills necessary to be a responsible and respected leader
- Provide veteran leaders with ongoing coaching and support as they tackle the tough issues of team leadership
- Provide veteran leaders with a solid peer network for guidance and support
- Provide veteran leaders with highly marketable leadership skills for a lifetime

TOPS IN SALARY POTENTIAL

Bucknell University alumni ranked No. 3 among liberal arts college graduates and among the highest for all colleges and universities in a 2015 PayScale College Salary Report released this summer in *Money Magazine*. The annual survey, which launched in 2008, assesses median starting and mid-career salaries among graduates of top U.S. liberal arts colleges. This year, alumni from 1,003 schools participated.

In this year's report, Bucknell alumni had a median early career salary of \$56,000, and the magazine ranked Bucknell No. 37 on its list of best colleges.

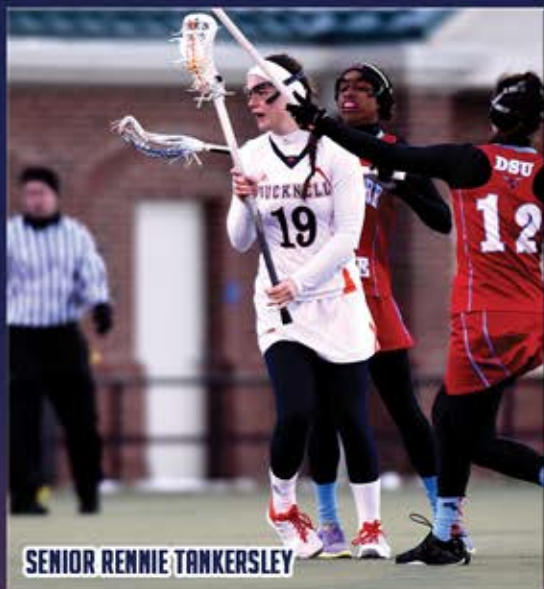
National Reputation

A number of recent reports have served to underscore Bucknell's national reputation:

- In 2007, *The Washington Monthly* ranked Bucknell No. 7 among the best liberal arts colleges in the country when it comes to fostering research and promoting an ethic of service and social mobility.
- In 2010, the Peace Corps listed Bucknell at No. 6 on its top 25 list of small colleges and universities producing Peace Corps Volunteers.
- In February 2010, *Kiplinger's Personal Finance* magazine rated Bucknell as the 11th best value in private liberal arts colleges.



BISON WOMEN'S LAX 2016



SENIOR RENNIE TANKERSLEY

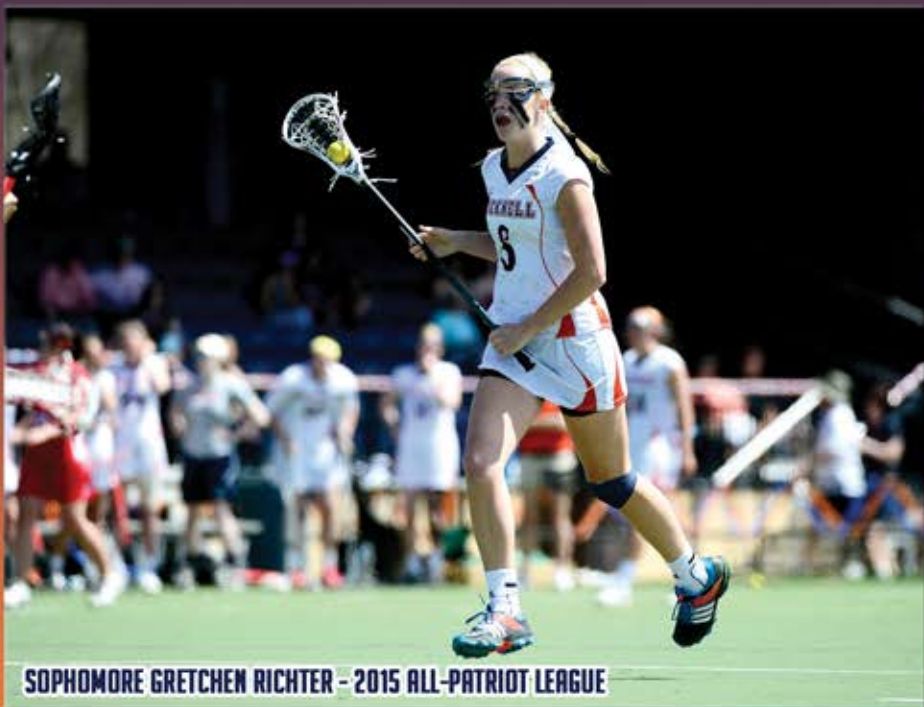


SENIOR EMILY BECKER

2016 SCHEDULE

- Feb. 17 > DELAWARE ST. > 5 p.m.
- Feb. 20 > at Mt. St. Mary's > 3 p.m.
- Feb. 27 > VILLANOVA > 1 p.m.
- Mar. 5 > at Manhattan > 11 a.m.
- Mar. 9 > MONMOUTH > 5 p.m.
- Mar. 12 > at St. Francis (Pa.) > 3 p.m.
- Mar. 14 > at Wagner > 3 p.m.
- Mar. 16 > WINTHROP > 4 p.m.
- Mar. 19 > at Boston U. > 1 p.m.
- Mar. 26 > ARMY > 1 p.m.
- Mar. 30 > at Lafayette > 7:30 p.m.
- Apr. 2 > HOLY CROSS > 1 p.m.
- Apr. 9 > AMERICAN > 1 p.m.
- Apr. 16 > at Colgate > 2 p.m.
- Apr. 20 > LOYOLA > 5 p.m.
- Apr. 23 > NAVY > 1 p.m.
- Apr. 29 > at Lehigh > 5 p.m.
- May 3 > PL Quarterfinals > TBA
- May 6 > PL Semifinals > TBA
- May 8 > PL Championship > TBA

@BisonSports
BucknellBison.com



SOPHOMORE GRETCHEN RICHTER - 2015 ALL-PATRIOT LEAGUE

BUCKNELL

LACROSSE

