

BUCKNELL BISON ATHLETICS:

Setting the Standard of Excellence



The Kenneth G. Langone Athletics & Recreation Center

Bucknell has captured the Patriot League Presidents' Cup, signifying the league's all-sports champion, 11 times in the 15-year history of the affiliation, including seven straight titles from 1998-2004. Bucknell finished second in the overall Cup standings in 2004-05 and tied for the women's all-sports title. It was the eighth straight year, and 11th time overall, that the Bison captured the women's title. In 2004-05, Bucknell won titles in men's basketball, women's swimming & diving and women's indoor and outdoor track & field.



Bucknell has won 11

Patriot League Presidents' Cups in 15 years

BUCKNELL RANKS **THIRD** IN THE NATION (TO NEBRASKA AND NOTRE DAME) IN TOTAL NUMBER OF ESPN THE MAGAZINE ACADEMIC ALL-AMERICA SELECTIONS. A TOTAL OF **110** BISON STUDENT ATHLETES HAVE RECEIVED NATIONAL ACADEMIC ALL-AMERICA RECOGNITION SINCE 1970.

A major element in ensuring Bucknell's commitment to athletics excellence is the Kenneth G. Langone Athletics & Recreation Center, which opened fully in 2003. One of the finest collegiate athletics facilities of its kind, the center includes the 4,000-seat Sojka Pavilion, the Olympic class Kinney Natatorium, the Krebs Family Fitness Center and the Berger Family Weight Room. A new Hall of Fame area, a display of Bucknell's Medal of Honor recipients, a sports medicine suite, modern offices for coaches and staff, and new locker room and classroom space are also included in the facility's layout.

Bucknell Student-Athletes

Among Nation's Best

Bucknell takes great pride in its commitment to excellence on and off the playing fields. From Presidents' Cups to Academic All-Americans to graduation rates that are ranked annually the national top-10, Bucknell is clearly at the head of the class when it comes to upholding the scholar-athlete ideal.

- Bucknell **LED THE NATION** in graduation rates in the 2003 survey conducted by the NCAA and the U.S. Department of Education. Bucknell graduated 100% of the student-athletes who entered school in 1996. It was the third time Bucknell has led the nation in graduation rates, and the Bison have never finished out of the top 10.

- Bucknell claimed its 100th Patriot League Scholar-Athlete of the Year in the spring of 2005. That is more than twice the next-highest total.

- Bucknell student-athletes comprised nearly **one-fourth** of the Patriot League Academic Honor Roll in 2004-05. A total of 300 Bison recorded a GPA of 3.2 or better during their sport's competition season. Among all BU student-athletes, 227 made the Dean's List with GPAs of 3.5 or better in the spring of 2005.

- Twenty-two of Bucknell's 26 varsity squads posted team GPAs of 3.0 or better in the spring of 2005, including all 14 women's programs.

- In addition to the 110 ESPN The Magazine Academic All-Americans produced since 1970, Bucknell has also claimed 213 Academic All-District honorees over the same span, including nine last year.

- With four more Patriot League championships in 2004-05, Bucknell has now earned 46 crowns in 15 years in the league. In addition, Bucknell has had 68 conference players of the year, 65 PL coaches of the year and a whopping 391 individual league champions from sports such as cross country, track & field, swimming & diving, tennis and golf.

- Bucknell's men's basketball team made history in 2005, writing national headlines with a stirring 64-63 upset of Kansas at the NCAA Tournament. It was the first NCAA men's basketball win in school and Patriot League history. The victory earned Bucknell an ESPY Award in the "Best Upset" category.

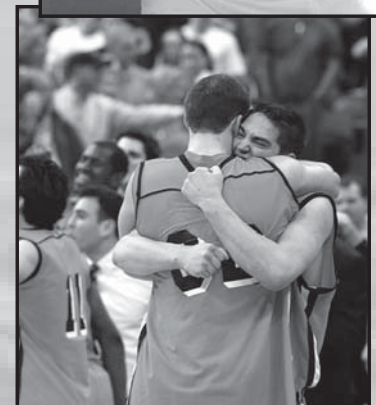


TABLE OF CONTENTS

Quick Facts	2
Recreation and Athletic Center	3
Patriot League Information	4
SAAC	4
Coaching Staff	5
2004-05 Academic Success	5
Men's Tennis	
2005-06 Preview	6
2005-06 Profiles	6-8
2004-05 Results	8
Men's Record Book	9-12
Women's Tennis	
2005-06 Preview	13
2005-06 Profiles	13-15
2004-05 Results	15
Women's Record Book	16-18
General	
Tennis Mission Statement	19
Hall of Fame	19
Bucknell and Beyond	20
Bucknell's Sideline Coaching Program	20
Recruiting Information	21

Credits: This book was written and edited by Bucknell's Office of Athletic Communications. Photography by Art Foxall. Printing by Harmony Press, Inc., of Easton, Pa. **On the Cover:** 2005-06 Captains Veronica Brown, Asher Salam, Chelsea Mills and Rheanna Gaskin

BUCKNELL ATHLETICS & RECREATION MISSION STATEMENT

The Department of Athletics and Recreation strives to set the standard of excellence for intercollegiate and intramural programs in higher education, thereby advancing and drawing attention to the mission, core values, and educational goals of Bucknell University.

The Department believes that the student-athletes' academic programs must be their first priority. It is therefore committed to maintaining Bucknell's high national ranking for student-athlete graduation rates and for producing Academic All-Americans, and the continued leadership in the Patriot League in Academic Honor Roll nominations, based on grade-point averages. The coaches' and staffs' paramount responsibility is maintaining academic priorities and supporting student-athletes' education, even while providing the rigorous and serious NCAA Division I athletic opportunities Bucknell student-athletes seek.

Further, the Department promotes the personal growth of student-athletes and the general student body by encouraging personal health, development, and balance among intellectual, social, civic, and physical pursuits; by celebrating challenge and competition; and by preparing participants for service and leadership in the world. Coaches and staff direct a rich array of athletic programs and recreational opportunities aimed at increasing student engagement, as well as strengthening character, healthy living, teamwork, sportsmanship, and spirit. In creating shared experiences for students, faculty, and staff, as well as alumni, family, and friends, the Department's programs add substantially to Bucknell's sense of community and foster life-long relationships with Bucknell.

The Department embraces the University's decision to compete at the highest extramural level, in Division I of the National Collegiate Athletic Association (NCAA). Division I membership is valuable not only because this level of competition maximally challenges student-athletes, but also because it signals clearly Bucknell's high standards and seriousness of purpose in all extracurricular endeavors and it helps position Bucknell apart from other National Liberal Arts Colleges. Likewise, the competitive success the Department seeks, measured in part by consistent contention for the Patriot League's student-athletes and the University's alike, and it brings distinction and national recognition to Bucknell.

A student-centered operation, the Department is committed to providing equitable opportunities to women and men, as well as members of minority and majority groups of all kinds. The Department subscribes to, and complies with, all principles and regulations of the Patriot League, the Eastern College Athletic Conference, and the NCAA.

The department is proud that so many of today's exemplary Bison scholar-athletes will be tomorrow's outstanding leaders.

QUICK FACTS

University Information

Location: Lewisburg, Pennsylvania, 17837
Founded: 1846 as the University at Lewisburg
Enrollment: 3,400
Nickname: Bison
Colors: Orange and Blue
Affiliation: NCAA (Div. I)
Conference: ECAC, IC4A (cross country/track), Patriot League (American, Army, Bucknell, Colgate, Holy Cross, Lafayette, Lehigh and Navy)
President: Brian C. Mitchell
Director of Athletics: John P. Hardt
Senior Woman Administrator: Amanda Backus
Dir. of Athletic Communications: Jon Terry
Head Athletic Trainer: Mark Keppler

Men's & Women's Tennis Information

Head Coach: Rebecca Helt (9th season women, 4th men)
Alma Mater: Lock Haven University ('90)
Assistant Coach: Stephen Monge (Transylvania '98)
2005 - 06 Captains: Men's: Asher Salam, Women's: Veronica Brown, Rheanna Gaskin, Chelsea Mills
Letterwinners Returning/Lost: Men's: 6/3 Women's: 4/2
Men's & Women's Tennis Phone: (570) 577-3598

Email: helt@bucknell.edu
Webpage: www.BucknellBison.com

Tennis Contact: Julie Moses

Phone: 570-577-3068

Email: jlm061@bucknell.edu

Athletic Department FAX Phone: (570) 577-1660

Men's & Women's Tennis Address:

Rebecca Helt, Davis Gym, Lewisburg PA 17837

Application Information

Admissions Phone: (570) 577-1101

Application Deadline: Regular Decision — January 1, 2007;

Early Decision I — November 15, 2006;

Early Decision II — January 1, 2007;

Financial Aid — Nov. 15, 2006, for Early Decision I, and Jan. 1, 2007 for Regular Decision and ED II.

THE BISON NICKNAME

Early last century, Bucknell teams had no definitive nickname. To remedy this situation, the late William C. Bartol, a long-time professor of mathematics and astronomy at Bucknell, suggested, about 1910, that the nickname "Bisons" be adopted.

Geography was the main reason for the choice of the name. Bucknell's campus lies at the eastern end of the Buffalo Valley, which was one of the last stomping grounds of the American bison, or buffalo, in this part of the country. It is estimated that at one time, at least 10,000 bison roamed the reaches of the Buffalo Valley. As late as 1799, more than 300 were reported. The last buffalo in this section is believed to have been shot in 1800 at Buffalo Crossroads, about six miles from Bucknell.

The nickname currently used by most writers and broadcasters is "Bison," believed to be a more accurate use of the plural of the word bison.

Bucknell University, ranked among the top national liberal arts colleges in the nation, is a privately owned, co-educational institution with an undergraduate enrollment of approximately 3,400 students and a faculty of some 270 teachers, of which over 97 percent hold doctoral degrees.

The 100th college chartered in the United States, Bucknell was founded by Philadelphia Baptists in 1846 as the University at Lewisburg. The first class of seven men graduated in 1851 with the first woman receiving her degree in 1885. In 1886, the institution was renamed Bucknell University in honor of William Bucknell, a former trustee and benefactor.

A comprehensive university, Bucknell allows students to choose from many academic options, including 53 majors and 64 minors. In learning from and collaborating with experienced faculty, students will have access to state-of-the-art resources within the library, laboratory, computer center, multi-media room, and recreational facility.

Enrolling at Bucknell allows one to acquire global connections through the International Focus Semester Program, Semester of Studying Abroad Program, and interaction with students and faculty from various countries and continents.

Through the University's commitment to diversity, students of all ethnic, racial, geographical, intellectual, and political backgrounds converge on one campus to foster a community of acceptance and exploration in diversity. As a member of the Bucknell and Lewisburg communities, students are able to find their own niche while learning the importance of values.

The University's physical plant, located on a 400-acre campus overlooking the Susquehanna River, includes more than 80 buildings. Recent additions include a \$1 million computer center constructed as a wing of the Dana Engineering Building, an \$8.2 million addition to the Ellen Clarke Bertrand Library, the \$9.7 million Weis Performing Arts Center, and the \$10.9 million Robert L. Rooke Chemistry Building and adjoining biology building.

In addition, construction of the Sigfried Weis Music Building was completed in the summer of 2001 in time for its doors to open for the fall semester. The new \$7 million music instruction building was one facet of *The Bucknell Campaign*, the most ambitious in Bucknell's 154-year history. A new residence hall facility opened in 2001 and houses 300 students within "neighborhoods" — a contemporary design intended to promote a sense of community.

And finally, the sparkling Kenneth G. Langone Athletics and Recreation Center opened in 2003, providing a state-of-the-art facility for varsity athletes and students, staff and faculty alike.

Bucknell is easily accessible, located on U.S. Route 15 approximately 60 miles north of Harrisburg and 25 miles south of Williamsport. The campus is seven miles south of Interstate 80 on Route 15.



THE KENNETH G. LANGONE ATHLETICS & RECREATION CENTER

The Bucknell University Department of Athletics and Recreation prides itself on setting the standard of excellence when it comes to success both on the playing fields and in the classroom. With 11 Patriot League Presidents' Cups in 15 years, annual top-10 national rankings in graduation rates, 110 Verizon Academic All-Americans in 35 years and 100 Patriot League Scholar-Athletes in 15 years, Bucknell is clearly at the head of the class in terms of upholding the scholar-athlete model.

The addition of the Kenneth G. Langone Athletics and Recreation Center, one of the finest collegiate athletics and recreation facilities of its kind in the nation, will help ensure the continuation of that success.

The facility enhances each of Bucknell's 27 varsity athletics programs and greatly expands the scope of its growing intramural and recreational sports offerings. A visually appealing structure located along Moore Avenue on the "downhill" side of campus, the Langone Athletics and Recreation Center was designed to reach out to all members of the campus community, including the student body, varsity student-athletes, faculty, staff and alumni.

Three primary venues lie within the facility: the Arthur D. Kinney Jr. Natatorium, the 4,000-seat Gary A. Sojka Pavilion and the Krebs Family Fitness Center, which includes the Berger Family Weight Room. Other features include a new location for the Bucknell Athletics Hall of Fame, a display of Bucknell's Congressional Medal of Honor recipients, a sports medicine and athletic training suite, classrooms, modern offices for coaches and staff and increased locker room space for varsity and recreational athletes.

The building was formally dedicated on Apr. 25, 2003, in honor of noted entrepreneur and philanthropist Ken Langone, a 1957 Bucknell graduate who, along with his wife Elaine, pledged \$11 million toward the center's construction. Langone was a member of the university Board of Trustees from 1980 to 1996.

One of the special qualities of the Langone Athletics and Recreation Center is the manner in which it supplements the pre-existing facilities. The brand new construction surrounds Gerhard Fieldhouse and historic Davis Gymnasium, which has been restored as a competition venue for the Bison volleyball and wrestling teams, as well as intramural, recreation and other varsity practice activities.

MAJOR FIELDS OF STUDY

ARTS & SCIENCES DEPARTMENTS: Accounting, Animal Behavior, Anthropology, Art and Art History, Astronomy, Biology, Business Administration, Cell Biology & Biochemistry, Chemistry, Classics, Comparative Western Humanities, Computer Science, East Asian Studies (Chinese, Japanese), Economics, Education (Early Childhood Development, Elementary, Secondary, and Educational Research), English, Environmental Studies, French, Geography, Geology, German, History, International Relations, Latin American Studies, Management, Mathematics, Music (Music Education, Music History, Music Theory & Composition, Performance), Philosophy, Physics, Political Science, Psychology, Religion, Russian, Spanish, Sociology, Theater and Dance, and Women's and Gender Studies. **ENGINEERING DEPARTMENTS:** Biomedical, Chemical, Civil & Environmental, Computer Science, Electrical, and Mechanical.

BUCKNELL WINS PRESIDENTS' CUP 11 OF 15 YEARS

The Presidents' Cup was created in 1991 to signify overall excellence in the 23 sports sponsored by the Patriot League, and Bucknell has captured the trophy 11 out of the 15 years it's been in existence.

In 2003-04 Bucknell captured its seventh straight President's Cup trophy by compiling 115 points on the strength of three Patriot League Championships and 14 other teams finishing in the top half of their respective. Bison men brought home their fifth cup, tying Navy, with 55.5 points.

Last year, for the first time since the 1997-98 academic year, the Presidents' Cup found a new home in Army - the only other Patriot League institution to win the Cup. On the strength of five 2005 spring championships, Army garnered a total of 113.25 points with Bucknell coming in a close second at 105 points. On the women's side, Bucknell tied with Army for the 2005 women's cup, each totalling 54.5 points. Bucknell won championships in women's swimming & diving and women's indoor and outdoor track & field, and took second in women's tennis.

PRESIDENTS' CUP RESULTS

Year	Overall	Women's	Men's
1990-91	Bucknell	Lafayette	Bucknell
1991-92	Bucknell	Lafayette	Lehigh
1992-93	Bucknell	Bucknell	Army
1993-94	Army	Army	Army
1994-95	Army #	Bucknell	Army
1995-96	Bucknell	Bucknell	Army
1996-97	Army #	Colgate	Army
1997-98	Bucknell	Bucknell	Army
1998-99	Bucknell	Bucknell	Bucknell & Lehigh
1999-00	Bucknell	Bucknell	Army #
2000-01	Bucknell	Bucknell	Bucknell
2001-02	Bucknell	Bucknell	Army #
2002-03	Bucknell	Bucknell	Bucknell
2003-04	Bucknell	Bucknell	Bucknell & Navy
2004-05	Army#	Bucknell	Army

Bucknell finished second.

STUDENT-ATHLETE ADVISORY COMMITTEE

"The mission of the NCAA Student-Athlete Advisory Committee is to enhance total student-athlete experience by promoting opportunity, protecting student-athlete welfare, and fostering a positive student-athlete image."

The SAAC provides insight on the student-athlete experience and to offer input on the rules, regulations, and policies that affect student-athletes' lives on NCAA member institution campuses.

The SAAC has been involved in various projects including: visits to local elementary schools, hospitals, and housing authorities; promotion of B.A.A.D. (Bucknell Athletes Against Drugs and Alcohol); and helping to hire a part-time trainer for the Athletic Training Office.

The Patriot League is proud of its mission of promoting opportunities for "Today's Scholar-Athletes, Tomorrow's Leaders." The League led NCAA Division I conferences in graduation rates for the sixth-straight year in 2004.

Patriot League graduates consistently excel as professionals in their chosen fields and are contributors to the betterment of society.

Patriot League teams and scholar-athletes are also achieving triumphs and accolades on the intercollegiate fields of competition.

Consider some recent team successes:

- Six teams won games in their respective NCAA Tournaments, including the 14th-seeded Bucknell men's basketball team which upset third-seeded Kansas;

- The Patriot League received multiple postseason bids in three sports - football, men's basketball and men's lacrosse;

- The Patriot League has advanced a team to the quarterfinal round of the NCAA Division I-AA Football Championship five of the last seven years, including three wins each by Colgate and Lehigh.

Individual achievements have been similarly impressive:

- Bucknell junior Lauren Wible of the softball team led the nation in batting average, and Chris Cara of the Bison men's lacrosse team led the country in points and assists per game;

- Six cross country and track and field student-athletes qualified for the NCAA Championships;

- Bucknell's Molly Creamer was a first-round draft pick, No. 10 overall, by the New York Liberty in the 2003 WNBA draft. She was one of a handful of former PL standouts playing professional basketball overseas in 2004-05;

- Nineteen student-athletes were named All-America;



Bucknell 64, Kansas 63

- Lafayette football's Stephen Bono was one of two recipients of the Division I-AA Athletic Directors' Association Postgraduate Scholarship;

- Ten student-athletes were either drafted or signed professional free agent contracts;

- Schuyler Williamson of Army was selected in the 2005 Major League Baseball June free-agent draft. It marks the seventh-straight year at least one Patriot League player was picked in the draft.

- A handful of men's soccer (Michael Lookingland of Bucknell and Shawn Kuykendall of American) and men's lacrosse (Navy's Graham Gill along with Bucknell's Chris Cara and Army's Jim Wagner) players also were drafted or began professional playing careers this year;

- Joe McCourt (Lafayette football), Daris Wilson (Bucknell football), Emily Ling (Lehigh softball), Lauren Gobar (Army softball) and Chris Cara (Bucknell men's lacrosse) all set new Patriot League career records in their respective sports.

The Patriot League's athletic success is achieved while remaining committed to its founding principle that student-athletes are academically representative of their class. Participation in athletics at Patriot League institutions is viewed as an important component of a well-rounded education.

The origins of Patriot League excellence date back to 1986 with the inception of a successful Division I-AA football conference. In 1990, the Patriot League expanded to an all-sports conference, now featuring 23 championship sports.

Full League members include American, Army, Bucknell, Colgate, Holy Cross, Lafayette, Lehigh and Navy. Associate members include Fordham and Georgetown for football and Villanova in women's lacrosse.

These member institutions are among the oldest and most prestigious in the nation. Alumni from Patriot League institutions have played a leadership role in the shaping of our country.

"The Patriot League — Today's Scholar-Athletes, Tomorrow's Leaders" is still the League's primary vision. However, the League is demonstrating annually that our student-athletes really can play.



Rebecca Helt
Head Coach
Ninth Season - Women
Fourth Season - Men

Rebecca Helt enters her ninth season as head coach of the women's tennis team, and her fourth at the helm of the men's program. In eight seasons as coach of the Bison women's squad, Helt has notched a 93-69 record, including last season's 17-5 campaign. The 17-

wins were the most in Bucknell history.

At the helm of the men's squad for the past three seasons, she has recorded a 25-46 mark.

During her Bucknell career, Helt has coached three All-Patriot League singles players in Nada Curcic, Veronica Brown and Tanya Sichko. Curcic was a two-time first team All-Patriot League honoree in '04 and '05, while Veronica Brown earned both first ('05) and second team ('03) recognition. Sichko earned second team honors last season. Helt also coached one all-league doubles team in Kerry Callaghan and Kristin Inglis ('00). Callaghan was also an ITA Scholar-Athlete in 2000, and Brown became Bucknell's first Patriot League Rookie of the Year two seasons ago. Last season, Curcic was named the first PL Player of the Year in the history of the program. Helt also coached the '05 team to a berth in the PL finals, a feat which had not been accomplished since 1994.

A 1990 graduate of Lock Haven University, Helt earned a bachelor of arts degree in journalism while competing for the Lock Haven tennis team. Following her college graduation, Helt earned a teaching certification from the United States Professional Tennis Registry and began teaching part time while working for STEP, Inc., in its wilderness-based team building program.

In 1994, Helt was hired as the assistant pro at West Branch Racquet Club in Williamsport, Pa. She continued her duties at West Branch while coaching the girls' tennis team at Williamsport High School.

Two years later, Helt was hired at the Doylestown Racquet Club in Doylestown, Pa. Helt took over the women's coaching reins at Bucknell in 1997, and in 2002 she was named the Bison men's coach as well.

Helt is also involved in tennis on the national level as an NCAA chair for women's tennis.

Helt continues her involvement in the game outside of Bucknell's program. Recently, the Bucknell tennis programs received a generous grant from USTA to promote tennis in the local community. Helt also volunteers during the summer as a Special Olympics sport advisor, and is a current Pennsylvania racquetball mixed doubles champion. She still competes in USTA tournaments, as well.

Helt lives in Lewisburg with her son, Ian.



Stephen Monge
Assistant Coach
Second Season

Stephen Monge is beginning his second season as the assistant coach at Bucknell.

Last season, Monge helped coach one Patriot League Player of the Year, three All-PL selections and the women's team that advanced to the PL finals.

Monge is a 1998 graduate of Transylvania University in Lexington, Ky. While at Transylvania, a Division III program, Monge competed in tennis at the varsity level and was a three-year letterman. During his playing career, he was a semi-finalist in the NAIA Rolex Tournament and a finalist in the 1995 Wabash College Tournament. After graduation, Monge spent a year as an assistant coach at his alma-mater where he coached the 1999 Regional Player of the Year.

Most recently, Monge had been the head men's and women's tennis coach at Limestone College in Gaffney, S.C. Monge arrived at Limestone in 2001. Limestone is a Division II school and a member of the Carolinas-Virginia Athletic Conference (CVAC).

While at Limestone, Monge's top men's player was named the 2003 Male CVAC Tennis Player of the Year. The honor was a first for any athlete at Limestone. Monge's top men's doubles team was ranked 20th nationally and third in the Mid-Atlantic region in 2003.

Prior to Limestone, Monge served as an assistant tennis professional at the Palmetto Dunes Tennis Center in Hilton Head, S.C. At Palmetto Dunes, a nationally-ranked resort, Monge worked with top-ranked juniors and Women's Tennis Association (WTA) tour players.

Monge's first head-coaching position was at Hilton Head High School in Hilton Head, S.C. While at Hilton Head, he was named the 2000 Regional Coach of the Year.



Jerry Shreck
Strength and Conditioning

Jerry Shreck will return for his fourth season as the strength and conditioning coordinator for the men's and women's tennis teams. He has at his disposal Bucknell's three-year-old, top-notch 15,000 square foot fitness center.

A 1996 graduate of East Stroudsburg University with a degree in movement studies and exercise science, Shreck is charged with implementing detailed daily strength and conditioning routines for each of Bucknell's programs.

The general philosophy of the Bison strength program is year-round periodization with a high-intensity base, supplemented with functional and sport-specific training. Training programs for most teams will employ explosion techniques with power bands and pliometrics.

The ultimate goal of the strength and conditioning program is the prevention of injuries and training athletes to their peak physical condition, as opposed to training for bodybuilding.

A native of nearby Montgomery, Pa., Shreck had served as the athletic trainer for the Bucknell men's basketball and men's lacrosse teams for three seasons. He is a member of the National Strength and Conditioning Association and the National Council of Strength and Fitness.

Shreck is assisted by former Bucknell head football coach Bob Curtis, second-year assistant Tracy Sibley, and interns Adam Gentry and Dave Miller.

BUCKNELL TENNIS ON THE 2004-05 PATRIOT LEAGUE ACADEMIC HONOR ROLL

- Ira Reibeisen
- Veronica Brown
- Renee Clinton
- Brian Cohen
- Chelsea Mills
- Kelly Porter

After turning in a Patriot League record of 1-5 last season, the Bison are ready to put last year behind them and have a fresh start to this year's campaign.

The Orange and Blue will open its spring season against Quinnipiac on Feb. 11, then travel to State College, Pa., to battle Penn State (Feb. 15), for one of the toughest matches of the season. For the annual spring break trip, the team will be traveling south to Charleston, S.C., and Richmond, Va., where they will be competing against College of Charleston, Charleston Southern, The Citadel, Coastal Carolina and Richmond. Bucknell will open Patriot League competition with a home match against American on March 25, and end the regular season with a match on the road against Lehigh on April 20.

The Bison return one of their most successful athletes in the lone senior on the squad, team captain Asher Salam. Along with Salam, talented juniors Matt Pikus and Brian Cohen, and sophomores Ira Reibeisen, Ben Young and John Lashnits will also be returning.

The coaching staff will be looking to Salam to take the reins and lead the team in 2005. Salam currently sits tied for fifth on Bucknell's all-time list for career best singles victories (47-53), third in doubles victories (45-32) and ranks fourth in combined singles and doubles victories (92-85). In this past fall season, Salam compiled a singles record of 5-4 and a doubles record of 5-3.

Pikus saw most of his singles action last season in the fourth, fifth and sixth positions and turned in an overall record of 3-8. He posted a total doubles record of 7-9, partnered with recent graduates, Gerald DiChiara in the two and three spots (1-1, 1-1) and Nick Deneferio in the one position (1-4). While teamed with Reibeisen in the second spot, the pair compiled a record of 3-3, and with Young in the three slot, he registered a record of 1-1.

Cohen, who has seen limited action in the past, had a strong fall season, turning in a singles record of

5-2 and a doubles mark of 8-4, and he is ready to carry that success over to the spring season.

Reibeisen is one of Bucknell's strongest returners as he turned in the best record on the team in singles dual matches in the 2004-05 campaign (14-9), mostly playing in the No. 2 spot. Aside from being partnered with Pikus, Reibeisen was also teamed with Salam in both the one and two positions, turning in records of 4-8 and 3-1, respectively. This fall, the sophomore turned in a singles record of 4-2 and a doubles record, again paired with Pikus, of 1-4.

Young saw action in only five matches last year as a newcomer, predominately in the No. 6 slot, where he turned in a record of 2-3. However, in doubles, Young played a strong role in the No. 3 position, as he compiled a record of 6-4, primarily partnered with Lashnits. Lashnits was used last year primarily in the four and five slots in singles dual matches, where he recorded a total of nine wins and six losses, turning in the third-best record on the team.

Six newcomers, Daniel Bednarek, Sidharth Makkar, Jason Suway, Jonathan Brenner, Benjamin Rosenstock and Ryan Sandburg, will join the team to form a formidable 12-man roster.

2005-06 MEN'S TENNIS ROSTER

Name	Cl.	Hometown/High School
Daniel Bednarek	Fr.	Haworth, N.J./Bergen Catholic
Jonathan Brenner	Fr.	Manhasset, N.Y./Chaminade
Brian Cohen	Jr.	Potomac, Md./Thomas Sprigg Wootton
John Lashnits	So.	Chappaqua, N.Y./Horace Greeley
Sidharth Makkar	Fr.	Queens, N.Y./Bronx School of Science
Matt Pikus	Jr.	Medford, N.J./Lenape
Ira Reibeisen	So.	Armonk, N.Y./Rye Country Day-Upper
Benjamin Rosenstock	Fr.	West Essex, N.J./West Essex
Asher Salam	Sr.	Wallingford, Pa./Strath Haven
Ryan Sandburg	Fr.	Orange, Calif./Canyon
Jason Suway	So.	Marietta, Ga./Walker School
Ben Young	So.	New Canaan, Conn./New Canaan



Asher Salam

Wallingford, Pa.
Strath Haven

Senior Captain



Salam's Career Dual Singles Stats							
Year	#1	#2	#3	#4	#5	#6	Total
2002-03	0-0	0-0	8-12	0-2	4-1	0-0	12-15
2003-04	0-0	2-3	8-6	1-0	0-0	0-0	11-9
2004-05	0-5	0-1	7-9	0-0	0-0	0-0	7-15
Career	0-5	2-4	23-27	1-2	4-1	0-0	30-39

Salam's Career Dual Doubles Stats				
Year	#1	#2	#3	Total
2002-03	4-1	6-9	4-1	14-11
2003-04	1-0	6-6	1-3	8-9
2004-05	5-13	3-1	0-0	8-14
Career	10-14	15-16	5-4	30-34

2004-05: Posted a 7-15 dual-match singles record, primarily used in the three-spot for the third year in a row ... pulled in eight doubles victories for the second consecutive season with partners Ira Reibeisen (7-9) and Nick Deneferio (1-5) ... turned in a tournament singles record of 8-5 and a doubles of 7-3. **2003-04:** Posted an 11-9 dual-match singles record, mostly at the three-spot going 8-6 ... earned eight doubles victories, six at the second position with partners Joe Menezes (5-7) and Gerald DiChiara (3-0) ... finished with an overall singles record of 15-14 ... was recognized by the team for his outstanding sportsmanship with the 2003-04 Coaches Award ... also awarded the Patriot League Award of Good Sporting Conduct. **2002-03:** Went 12-15 in singles, playing the bulk of his matches at the three spot, going 8-12 ... had a winning record in doubles, going 14-11 overall by winning four each at the one and three positions as well as six at the second spot, where he played most often ... teamed with 2002-03 captain Todd Jacobs as well as Gerald DiChiara for doubles. **Personal:** Son of Moudi and Haseeda Salam ... four-year letterman in tennis at Strath Haven High School ... earned first-team all-league, all-county, and all-state honors ... team won state championship twice... rated 19th in the USTA Middle States rankings... biology major.


Cohen's Career Dual Singles Stats							
Year	#1	#2	#3	#4	#5	#6	Total
2003-04	0-0	0-0	0-0	0-0	0-0	0-0	0-0
2004-05	0-0	0-0	0-0	0-0	0-0	0-0	0-0
Career	0-0	0-0	0-0	0-0	0-0	0-0	0-0

Cohen's Career Dual Doubles Stats				
Year	#1	#2	#3	Total
2003-04	0-0	0-1	0-1	0-2
2004-05	0-0	0-0	0-0	0-0
Career	0-0	0-1	0-1	0-2


Brian Cohen
 Potomac, Md.
 Thomas Sprigg Wootton
 Junior



2004-05: Was named to the Patriot League Academic Honor Roll ... made a strong showing in tournament and fall matches where he went 6-2 in singles and 1-1 in doubles with partner Ben Young. **2003-04:** Saw action in two dual-match singles contests ... went 5-4 in tournament singles play ... played in two dual doubles matches. **Personal:** Son of Bob and Carolyn Cohen ... graduated from Thomas Sprigg Wootton High School ... environmental studies.



Matt Pikus
 Medford, N.J.
 Lenape
 Junior



Pikus' Career Dual Singles Stats							
Year	#1	#2	#3	#4	#5	#6	Total
2003-04	0-0	0-0	0-0	3-3	9-3	1-0	13-6
2004-05	0-0	0-0	0-0	2-2	1-4	0-2	3-8
Career	0-0	0-0	0-0	5-5	10-7	1-2	16-14

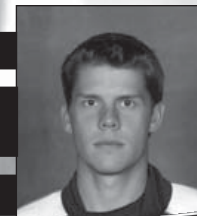
Pikus' Career Dual Doubles Stats				
Year	#1	#2	#3	Total
2003-04	6-7	1-1	0-2	7-10
2004-05	1-4	4-4	2-1	7-9
Career	7-11	5-5	2-3	14-19

2004-05: Saw action in 11 singles dual matches, mainly in the four and five slots ... turned in a dual match doubles record of 7-9, mainly partnered with Nick Denefrio (1-4) and Ira Reibeisen (3-3) ... in tournament play went 6-3 in singles and 2-3 in doubles. **2003-04:** Went 16-10 during his freshman campaign, including a 12-6 dual match record ... played mostly at the No. 5 position going 9-3 ... also made appearances at the fourth and sixth positions ... played 13 matches at the No. 1 doubles slot with partner Nick Denefrio ... picked up three victories in tournament singles play. **Personal:** Son of Stan and Jean Pikus ... two-time all-state selection ... three-time team MVP at Lenape High School ... team captain during junior and senior years ... ranked 11th in USTA Middle States rankings ... is majoring in accounting.

Lashnits' Career Dual Singles Stats							
Year	#1	#2	#3	#4	#5	#6	Total
2004-05	0-0	0-0	0-0	2-2	7-4	0-0	9-6
Career	0-0	0-0	0-0	2-2	7-4	0-0	9-6

Lashnits' Career Dual Doubles Stats				
Year	#1	#2	#3	Total
2004-05	0-0	2-1	3-9	5-10
Career	0-0	2-1	3-9	5-10


John Lashnits
 Chappaqua, N.Y.
 Horace Greely
 Sophomore



2004-05: Saw action in 15 singles dual matches as a freshman and compiled a record of 9-6 playing in the four (2-2) and five slots (7-4) ... turned in a singles tournament play record of 10-4 ... in dual doubles matches, he went 5-10, paired with Ben Young (3-3) and Garrett Neff (0-3) in the No. 3 position...in doubles tournament action, he went 5-4. **Personal:** Son of Tom and Judy Lashnits...ranked 420th in USTA rankings and 24th in ETA... undeclared major.



Ira Reibeisen
 Armonk, N.Y.
 Rye Country Day - Upper
 Sophomore



Reibeisen's Career Dual Singles Stats							
Year	#1	#2	#3	#4	#5	#6	Total
2004-05	0-2	14-7	0-0	0-0	0-0	0-0	14-9
Career	0-2	14-7	0-0	0-0	0-0	0-0	14-9


Reibeisen's Career Dual Doubles Stats				
Year	#1	#2	#3	Total
2004-05	4-8	6-4	0-0	10-12
Career	4-8	6-4	0-0	10-12

2004-05: Was named to the Patriot League Academic Honor Roll ... saw action in 23 total singles dual matches as a freshmen and turned in a record of 14-9, played mostly in the second position and had strongest record on the team ... played in 22 dual doubles matches, all in the one and two spots ... primarily partnered with Asher Salam (No. 1, 4-8, No. 2, 3-1) and Matt Pikus (No. 2, 3-3) ... in tournament play went 9-3 in singles and 6-2 in doubles. **Personal:** Is the son of Mark and Debbie Reibeisen ... won two varsity letters for tennis in high school... had a USTA Ranking of 80 and an ETA ranking of 9 ... is an accounting major.

2005-06 Men's Profiles/2004-05 Dual Match Results

Young's Career Dual Singles Stats							
Year	#1	#2	#3	#4	#5	#6	Total
2004-05	0-0	0-0	0-0	0-0	0-0	2-3	2-3
Career	0-0	0-0	0-0	0-0	0-0	2-3	2-3

Young's Career Dual Doubles Stats				
Year	#1	#2	#3	Total
2004-05	0-0	0-0	6-4	6-4
Career	0-0	0-0	6-4	6-4



Ben Young
New Canaan, Conn.
New Canaan
Sophomore


2004-05: Saw action in five singles dual matches in the sixth position and turned a record of 2-3 ... in doubles dual matches he went 6-4, in the third position, partnered with John Lashnits (3-3), Gerald DiChiara (2-0) and Matt Pikus (1-1) ... in tournament play, he went 5-3 in singles and in doubles went 2-2. **Personal:** Son of Ben and Elaine Young ... won four varsity letters in tennis and was a two-year team captain ... was all-state four years, all-county two years ... part of a two-time state championship team ... was an individual state champion ... was a New England High School Champion twice (once singles, once doubles) ... is majoring in elementary education.



2005-06 Newcomers




Daniel Bednarek
Haworth, N.J.
Bergen Catholic
Freshman
ETA Ranking: 19




Sidharth Makkar
Queens, N.Y.
Bronx School of Science
Freshman
ETA Ranking: 18



Jason Suway
Marietta, Ga.
Walker School
Sophomore



Jonathan Brenner
Manhasset, N.Y.
Chaminade
Freshman
ETA Ranking: 8
USTA Ranking: 245



Benjamin Rosenstock
West Essex, N.J.
West Essex
Freshman
ETA Ranking: 28



Ryan Sandburg
Orange, Calif.
Canyon
Freshman
So. Calif. Ranking: 55
USTA Ranking: 220

2004-05 DUAL SEASON RESULTS (9-14 overall, 1-5 PL)

Date	Opponent	BU	Opp.
2/12	Quinnipiac	3	4
2/16	Penn State	0	7
2/19	St. Bonaventure	1	6
	vs. Buffalo	2	5
2/25	Washington College	5	2
2/26	vs. Richmond	0	7
3/5	Duquesne	5	2
3/13	vs. Stetson #	0	7
3/14	vs. Rhode Island #	7	0
	vs. Cleveland State #	5	2
3/15	vs. Eckerd College #	1	5
3/16	vs. Winona State #	7	0
3/26	American*	0	7
3/29	Navy*	0	7
4/1	Army *	1	6
4/9	Colgate *	1	6
4/10	Lafayette *	5	2
4/13	UMBC	5	2
4/15	Lehigh *	2	5
4/16	Villanova	4	3
4/19	Binghamton	1	6
4/20	Bloomsburg	6	1
4/24	Delaware	3	4

* Patriot League match
- Spring Break, Orlando/Winter Park, Fla.
Home matches in **Bold**

2004-05 DUAL MATCH SINGLES STATISTICS

Player	#1	#2	#3	#4	#5	#6	Tot.
Nick Denebrio	8-7	0-1	2-4				10-12
Gerald DiChiara				3-8	1-1	3-3	7-12
John Lashnits				2-2	7-4		9-6
Joe Menezes				1-3	1-3	2-6	4-12
Garrett Neff					0-1	1-0	1-1
Matt Pikus				2-2	1-4	0-2	3-8
Asher Salam	0-5	0-1	7-9				7-15
Ira Reibeisen	0-2	14-7					14-9
Ben Young						2-3	2-3
Totals	8-14	14-9	9-13	8-15	10-13	8-14	57-78

2004-05 DOUBLES DUAL MATCH STATISTICS

Player	#1	#2	#3	Tot.
Denebrio/Lashnits		0-1	0-1	0-2
DiChiara/Pikus		1-1	1-1	2-1
DiChiara/Neff			1-4	1-4
DiChiara/Young			2-0	2-0
Denebrio/Sala,	1-5			1-5
Denebrio/Menezes		3-4		3-4
Reibeisen/Salam	4-8	3-1		7-9
Lashnits/Neff			0-3	0-3
Pikus/Reibeisen		3-3		3-3
Pikus/Young			1-1	1-1
Denebrio/Lashnits		1-1	0-1	1-2
Denebrio/Pikus	1-4			1-4
Lashnits/Young			3-3	3-3
Lashnits/Menezes			0-1	0-1
Totals	6-17	11-11	8-15	25-42

ALL-TIME OPPONENTS

Opponent	W	L	T	1st Met	Opponent	W	L	T	1st Met
Akron	0	2	0	1988	UMBC	7	4	0	1992
Albright	18	0	0	1938	Mercer	0	1	0	1999
American	3	4	0	1950	Miami (Fla.)	0	1	0	1953
Army	3	17	0	1971	Miami (Ohio)	0	1	0	1999
Aurora	1	0	0	1991	Millersville	2	1	0	1990
Barry	1	2	0	1991	Monmouth	1	1	0	1990
Belmont	1	1	0	1998	Morehead State	0	1	0	1997
Bethune-Cookman	0	2	0	1999	Morgan State	1	0	0	1996
Binghamton	0	6	0	2001	Mount St. Mary's	9	2	0	1992
Bloomsburg	10	14	0	1931	Muhlenberg	14	5	0	1933
Boca Raton	0	2	0	1991	Niagara	1	1	0	2002
Buffalo	2	3	0	1941	Navy	0	25	0	1950
Carnegie Tech	0	1	0	1924	Norfolk State	0	1	0	2003
CCNY	1	0	0	1921	Northern Iowa	2	1	0	1995
Cleveland State	1	0	0	2005	NYU	1	0	0	1937
Colgate	9	45	0	1942	PMC	2	0	0	1922
Cornell	0	8	0	1951	Penn State	14	54	2	1921
Cortland	1	0	0	1950	Pittsburgh	23	4	2	1923
Dayton	0	1	0	2002	Quantico Marines	0	2	0	1958
Delaware	26	20	1	1933	Quinnipiac	1	1	0	2001
Dickinson	19	2	0	1922	Randolph-Macon	0	1	1	1967
Drexel	3	0	0	1941	Rhodes College	0	1	0	2003
Duke	0	1	0	1940	Rhode Island	1	0	0	2005
DuPont	1	0	0	1951	Richmond	1	1	0	1928
Duquesne	5	2	0	1997	Rider	16	3	0	1970
Eastern Kentucky	0	1	0	1996	Robert Morris	3	0	0	2000
East Stroudsburg	9	5	0	1935	Rochester	4	5	0	1972
Eckerd	0	1	0	2005	Rockhurst	1	0	0	1995
Elizabethtown	3	0	0	1956	Rollins College	0	1	0	1949
Embry-Riddle	1	1	0	1989	Rutgers	11	13	0	1941
Fairfield	3	0	0	1997	St. Bonaventure	2	5	0	1994
Fla. Atlantic	0	3	0	1991	Saint Francis (Pa.)	8	0	0	1995
Flagler	1	0	0	1990	St. John's	1	0	0	1938
Fordham	3	1	0	1992	St. Joseph's	17	0	0	1958
Franklin & Marshall	35	18	0	1927	Scranton	6	0	0	1963
George Mason	1	0	0	1989	South Carolina State	0	1	0	2000
George Washington	3	3	0	1950	Stony Brook	2	0	0	1998
Georgetown	3	8	0	1936	Stetson	0	3	0	1999
Gettysburg	39	6	1	1922	Susquehanna	45	0	2	1921
Haverford	4	5	0	1928	Swarthmore	1	5	0	1930
Hobart	2	0	0	1992	Syracuse	9	4	0	1925
Hofstra	6	2	0	1983	Temple	6	4	0	1932
Holy Cross	10	0	0	1992	Towson	13	9	0	1983
Howard	0	1	0	1979	Tufts	1	0	0	1997
Indiana State	0	1	0	1990	Upsala	9	0	0	1970
IPFW	2	0	0	2002	Valparaiso	2	0	0	1999
IUPUI	1	0	0	2004	Villanova	8	2	0	1931
Jacksonville	1	0	0	1989	Washington College	1	0	0	2005
James Madison	0	1	0	1982	Wash. & Jefferson	0	1	0	1929
Juniata	21	0	1	1922	West Chester	6	4	0	1975
Kent State	1	0	0	1971	Western Maryland	4	0	0	1928
Kutztown	1	0	0	1998	West Virginia	0	1	0	1982
Lafayette	37	20	0	1936	Wilmington	1	0	0	2002
LaSalle	4	0	0	1951	William & Mary	1	0	0	1967
Lebanon Valley	6	1	0	1935	Winona State	1	0	0	2005
Lehigh	30	36	0	1921	Wright State	1	0	0	1996
Loyola (MD)	5	1	0	1955	Youngstown State	2	0	0	1995
Lycoming	4	0	0	1956	Totals	606	428	10	.585 (win %)
Maryland	2	5	0	1921					

* 2005-06 opponents in bold

YEAR-BY-YEAR RESULTS

Year	Record			Head Coach	Year	Record			Head Coach
	W	L	T			W	L	T	
1921	6	0	0	no coach	1979	2	13	0	Craig Reynolds
1922	4	0	2	no coach	1980	5	9	0	Craig Reynolds
1923	5	0	1	no coach	1981	5	7	0	Craig Reynolds
1924	5	3	0	Floyd Ballentine	1982	8	7	0	Craig Reynolds
1925	2	0	1	Floyd Ballentine	1983	2	7	1	Craig Reynolds
1926	7	0	0	Floyd Ballentine	1984	6	6	0	Craig Reynolds
1927	8	0	0	Floyd Ballentine	1985	10	4	0	Craig Reynolds
1928	4	2	1	Floyd Ballentine	1986	7	7	0	Craig Reynolds
1929	3	3	1	Floyd Ballentine	1987	8	3	0	Craig Reynolds
1930	1	6	2	Floyd Ballentine	1988	10	4	0	Craig Reynolds
1931	4	5	0	Floyd Ballentine	1989	12	2	0	Craig Reynolds
1932	4	3	0	Floyd Ballentine	1990	8	3	0	Craig Reynolds
1933	6	2	0	Floyd Ballentine	1991	7	5	0	Craig Reynolds
1934	5	3	0	Floyd Ballentine	1992	7	7	0	Craig Reynolds
1935	4	2	0	Floyd Ballentine	1993	6	7	0	Bob Hammerlee
1936	5	4	0	Floyd Ballentine	1994	6	16	0	Bob Hammerlee
1937	7	2	0	Floyd Ballentine	1995	12	8	0	Bob Hammerlee
1938	11	0	0	Floyd Ballentine	1996	14	7	0	Bob Hammerlee
1939	10	3	0	Floyd Ballentine	1997	14	8	0	Bob Hammerlee
1940	6	5	0	Floyd Ballentine	1998	19	2	0	Bob Hammerlee
1941	10	2	0	Floyd Ballentine	1999	11	10	0	Bob Hammerlee
1942	7	1	0	Floyd Ballentine	2000	7	13	0	Bob Hammerlee
1943	No Team				2001	9	7	0	Bob Hammerlee
1944	4	1	0	Floyd Ballentine	2002	14	6	0	Bob Hammerlee
1945	No Team				2003	7	21	0	Rebecca Helt
1946	1	2	0	Henry Peters	2004	9	11	0	Rebecca Helt
1947	2	3	0	Henry Peters	2005	9	14	0	Rebecca Helt
1948	2	5	0	Henry Peters	Total:	606	428	10	.585 (win %)
1949	6	5	0	Henry Peters					
1950	7	7	0	Henry Peters					
1951	8	9	0	Henry Peters					
1952	8	7	0	Henry Peters					
1953	8	6	0	Henry Peters					
1954	10	4	0	Henry Peters					
1955	10	8	0	Henry Peters					
1956	9	9	0	Henry Peters					
1957	8	5	0	Henry Peters					
1958	9	7	0	Henry Peters					
1959	7	6	0	Henry Peters					
1960	5	7	0	Henry Peters					
1961	5	7	0	Henry Peters					
1962	2	10	0	Henry Peters					
1963	6	5	0	Henry Peters					
1964	4	5	0	Henry Peters					
1965	8	3	0	Trevor Lewis					
1966	9	2	0	Tommy Thompson					
1967	6	7	1	Henry Peters					
1968	8	4	0	Henry Peters					
1969	11	2	0	Henry Peters					
1970	14	0	0	Henry Peters					
1971	13	1	0	Craig Reynolds					
1972	11	2	0	Craig Reynolds					
1973	9	2	0	Craig Reynolds					
1974	9	3	0	Craig Reynolds					
1975	9	4	0	Craig Reynolds					
1976	5	10	0	Craig Reynolds					
1977	10	4	0	Craig Reynolds					
1978	5	6	0	Craig Reynolds					

ALL-TIME COACHES LOG

Year(s)	Name	Record
2003-pres.	Rebecca Helt	25-46-0
1993-2002	Bob Hammerlee	112-84-0
1971-92	Craig Reynolds	168-116-1
1967-70	Hank Peters	39-13-1
1966	Tommy Thompson	9-2-0
1965	Trevor Lewis	8-3-0
1946-64	Hank Peters	117-117-0
1924-44	Floyd Ballentine	113-47-5
1921-34	No Coach	15-0-3
Total		606-428-10



Floyd Ballentine coached the 1942 team.

**CAREER BEST
SINGLES VICTORIES - TOP 25**

<u>RANK</u>	<u>PLAYER</u>	<u>YEARS</u>	<u>RECORD</u>
1.	Ed Hess	1987-90	60-3
2.	Steve Bomberger	1996-99	52-32
3.	Joe Menezes	2001-05	49-53
	Gerald DiChiara	2001-05	49-54
5.	Dave O'Connor	1987-90	47-10
	Asher Salam	2002-pres.	47-53
7.	T.K. Kelly	1997-00	44-26
	Todd Jacobs	1999-03	44-43
	Nick Denefrio	2001-05	44-66
10.	Steve Baird	1970-72	38-1
	Alex Anderson	1969-71	38-2
	Jim Lackritz	1970-72	38-3
	Jim Greenho	1986-89	38-9
	John McManigal	1972-75	38-11
	Justin Quandt	1996-99	38-21
	Josh Plumb	1995-97	38-25
17.	Casey Jones	1972-75	37-12
	Alex Dannin	1996-99	37-18
	Mark McGuire	1992-95	37-31
20.	Steve Cottrell	1986-89	36-18
21.	Scott Stieler	1984-87	35-16
22.	Alex Davydov	1998-02	34-41
23.	Mark Poses	1968-70	32-7
	Sean Galligan	1995-97	32-12
	Andrew Cantor	1989-92	32-14

**TOP 25 - MOST CAREER VICTORIES
SINGLES & DOUBLES COMBINED**

<u>PLAYER</u>	<u>SINGLES</u>	<u>DOUBLES</u>	<u>TOTAL</u>	
1. Steve Bomberger, 1996-99	52-32	50-27	102-59	
2. Ed Hess, 1987-90	60-3	41-19	101-22	
3. Gerald DiChiara, 2001-05	49-54	49-26	98-80	
4. Asher Salam, 2002-pres.	47-53	45-32	92-85	
5. T.K. Kelly, 1997-00	44-26	43-23	87-49	
	Nick Denefrio, 2001-05	44-66	43-46	87-112
7. Mark McGuire, 1992-95	37-31	42-24	79-55	
8. Joe Menezes, 2001-05	49-53	29-29	78-82	
9. Jim Greenho, 1986-89	38-9	38-14	76-23	
10. John McManigal, 1972-75	38-11	36-7	74-18	
11. Casey Jones, 1972-75	37-12	36-10	73-22	
	Todd Jacobs, 1999-03	44-43	29-43	73-86
13. Alex Davydov, 1998-02	34-41	37-34	71-75	
14. Steve Baird, 1970-72	38-1	31-2	69-3	
15. Steve Cottrell, 1986-89	36-18	31-12	67-30	
16. Alex Anderson, 1969-71	38-2	28-6	66-8	
	Josh Plumb, 1995-97	38-25	28-30	66-55
18. Jim Lackritz, 1970-72	38-3	27-5	65-8	
19. Andrew Cantor, 1989-92	32-14	28-13	60-27	
20. Jerome Charlier, 1989-91	27-20	32-13	59-33	
21. Dave O'Connor, 1987-90	47-10	10-7	57-17	
	Justin Quandt, 1996-99	38-21	19-11	57-32
23. Keith Kimball, 1971-73	29-8	26-9	55-17	
24. Greg Hallos, 1985-88	29-19	25-21	54-40	
	Mike Murphy, 1984-87	28-19	26-23-1	54-42-1

**CAREER BEST
DOUBLES VICTORIES- TOP 25**

<u>RANK</u>	<u>PLAYER</u>	<u>YEARS</u>	<u>RECORD</u>
1.	Steve Bomberger	1996-99	50-27
2.	Gerald DiChiara	2001-05	49-26
3.	Asher Salam	2002-pres.	45-32
4.	T.K. Kelly	1997-00	43-23
	Nick Denefrio	2001-05	43-46
6.	Mark McGuire	1992-95	42-24
7.	Ed Hess	1987-90	41-19
8.	Jim Greenho	1986-89	38-14
9.	Alex Davydov	1998-02	37-34
10.	John McManigal	1972-75	36-7
	Casey Jones	1972-75	36-10
12.	John Newman	1994-96	33-23
13.	Jerome Charlier	1989-91	32-13
14.	Steve Baird	1970-72	31-2
	Steve Cottrell	1986-89	31-12
16.	Joe Menezes	2001-05	29-29
	Todd Jacobs	1999-03	29-43
18.	Alex Anderson	1969-71	28-6
	Andrew Cantor	1989-92	28-13
	Drew Thimme	1994-97	28-20
	Josh Plumb	1995-97	28-30
22.	Jim Lackritz	1970-72	27-5
	Eric Swartz	1988-89	27-8
24.	Keith Kimball	1971-73	26-9
	Chris Stenstrom	1991-93	26-12
	Mike Murphy	1984-87	26-23-1

**CAREER BEST
#1 SINGLES VICTORIES**

<u>YEAR</u>	<u>PLAYER</u>	<u>CLASS</u>	<u>RECORD</u>
1938	George McCall	So.	9-1
1951	Paul Remmey	So.	12-3
1957	Chuck Siede	Jr.	9-4
1959	Bill Sweet	Jr.	8-5
1965	Jay Pekar	So.	8-3 (2 at #3)
1966	Jay Pekar	Jr.	8-4
1967	Jay Pekar	Sr.	11-3
1970	Wheeler Neff	Sr.	10-4
1971	Steve Baird	Jr.	14-0
1972	Steve Baird	Sr.	11-0
1973	Casey Jones	So.	8-3
1974	Casey Jones	Jr.	9-3
1975	Casey Jones	Sr.	9-4
1982	Steve Haas	Jr.	10-5
1987	Ed Hess	Fr.	11-0
1988	Ed Hess	So.	13-1
1989	Ed Hess	Jr.	13-1
1990	Ed Hess	Sr.	12-0
1991	Jerome Charlier	Jr.	7-6
1995	Mark McGuire	Sr.	14-5
1998	T.K. Kelly	So.	18-2
1999	T.K. Kelly	Jr.	15-8

* Statistics include tournament and dual matches through Fall 2005

CAPTAINS ROSTER (SINCE 1968)

YEAR	NAME
1967-68	David Gordon
1968-69	David Gordon
1969-70	Wheeler Neff Mark Poses
1970-71	Alex Anderson
1971-72	Steve Baird James Lackritz
1972-73	Keith Kimball
1973-74	Casey Jones John McManigal
1974-75	Casey Jones John McManigal
1975-76	Allan Jay
1976-77	John Weierbach
1977-78	Carl Lloyd
1978-79	Brad Mathias
1979-80	James Marsh
1980-81	Paul Adkins
1981-82	Eric Simpson Bill Beneke
1982-83	Steve Haas
1983-84	Mike Driscoll
1984-85	Jim Beneke Peter Ochroch
1985-86	Jim Porter Scott Stieler
1986-87	Mike Murphy Scott Stieler
1987-88	Steve Cottrell Greg Hallas
1988-89	Steve Cottrell Jim Greenho
1989-90	Ed Hess
1990-91	Scott Bank
1991-92	Andrew Cantor
1992-93	Chris Rempel Chris Stenstrom
1993-94	Mark McGuire
1994-95	Mark McGuire
1995-96	John Newman
1996-97	Josh Plumb Drew Thimme
1997-98	Steve Bomberger John Scarborough
1998-99	Steve Bomberger Alex Dannin
1999-2000	T.K. Kelly
2000-01	Alex Davydov Hayes Hoppole
2001-02	Alex Davydov
2002-03	Todd Jacobs
2003-04	Nick Deneferio
2004-05	Nick Deneferio
2005-06	Gerald DiChiara Asher Salam

ALL-PATRIOT LEAGUE

All-Patriot League Singles

Year	Name
1993-94	Mark McGuire
1997-98	T.K. Kelly
1998-99	T.K. Kelly

All-Patriot League Doubles

Year	Name
1998-99	T.K. Kelly/ Steve Bomberger

Patriot League Coach of the Year

Year	Name
1996-97	Bob Hammerlee

Patriot League Scholar-Athlete

Year	Name
1994-95	Mark McGuire

BUCKNELL MEN'S TENNIS - A RICH HERITAGE

GEORGE McCALL (1942) -- Had an 18-6 singles record for Bucknell between 1938-42 ... won the 1964 National Indoor and Outdoor Hardcourt and French Open master's doubles championships ... later served as first commissioner of World Team Tennis.

PAUL REMMEY (1953) -- Played number one singles for the Bison for three years, compiling a record of 28-12 ... his dual-match victory total was a school record for nearly 20 years ... reached the semifinals at the Eastern Championships.

WHEELER NEFF (1970) -- Finished up his career with a singles record of 27-11 and three varsity letters ... was part of the 1969 team that went 7-0 in MAC play and won the northern division and the 1970 team that went undefeated (14-0), a feat which hadn't been accomplished since 1938.

WILLIAM CARSON (1942) -- Served as team captain in 1942 ... was part of the 1941 team that turned in a 10-2 record, while the 1942 team finished the season with just one loss (7-1 overall).

ALEX ANDERSON (1971) -- Compiled impressive 38-2 singles record from 1969-71, and played on three Middle Atlantic Conference championship teams ... won 33 straight matches, still a school record ... lost just two sets in 14 matches in 1970.

STEVE BAIRD (1972) -- Owned a career 38-1 singles record at Bucknell and was the 1971 fall MAC champion ... has been president of the American Platform Tennis Association, and a five-time national champion in that sport.

GEORGE (CASEY) JONES (1975) -- Played at first singles three straight years and compiled 37-12 record ... ranks 11th in Bucknell history in combined singles and doubles victories with a 73-22 record.

ED HESS (1990) -- Bucknell's winningest singles player, with a record of 60-3 and a combined singles and doubles record of 101-22, ranking second ... went undefeated (18-0) as a senior and won three ECC first singles titles.

MARK McGUIRE (1995) -- Seventh in BU history in overall victories with 79, and sixth in BU history for doubles wins with 42 ... two-time winner of the ITA Scholar-Athlete Award.

ACADEMIC HONORS

ITA SCHOLAR-ATHLETE

Year	Name
2005	Ira Reibeisen
2004	Brian Cohen



The 1958 Men's Tennis team won the Middle Atlantic Conference Championship.

Bucknell's women's tennis team is hoping to take the momentum built up from last season's second-place Patriot League finish and 17-win performance into the spring of 2006. Although the Bison lost two very strong players in Nada Curcic and Tanya Sichko to graduation, the coaching staff is confident this year's team will be equally successful.

The Orange and Blue opens up its spring season at the Cornell Invitational (Jan. 27-29), before traveling down south to South Carolina and Virginia to battle College of Charleston, Charleston Southern, Coastal Carolina and Richmond, on the annual spring break trip. League play will begin at home, against American on March 24, and also finish at home against Colgate on April 15. The last regular season match will be on the road against Bloomsburg on April 18.

Returning for Bucknell are senior tri-captains Veronica Brown, Rheanna Gaskin and Chelsea Mills, along with juniors Renee Clinton and Kelly Porter, and sophomore Caitlin Baffa.

Brown, the 2002-03 Patriot League Rookie of the Year, comes into the 2006 spring season ranked third among the Bison's top-20 in career singles victories (67-35), second in career doubles wins (70-31) and third in combined victories (140-66). In the fall season, she compiled a record of 4-7 in singles and 7-6 in doubles action and was one of only two Bison to advance to the competitive ITA Regionals. Brown is also a two-time All-Patriot League honoree.

Gaskin is currently ranked fifth in career singles wins (61-39), is tied for fourth in career doubles wins (45-32) and sixth in combined victories (106-71) in the Bucknell record books. Last season, she turned in a dual-match singles record of 11-8, mainly from the No. 5 slot, and went 10-8 in the No. 3 doubles position, with Mills as her primary partner.

Mills is ranked between Brown and Gaskin in the record books in singles (63-22), is sixth in doubles

wins (44-18) and is fifth for total victories (107-40). Last season, Mills turned in a dual-match singles record of 15-4, mainly as the No. 6 player, for the third-best record on the squad. In the fall, she posted the second-best mark, with seven wins and four losses.

Clinton and Porter have seen limited action the past two seasons, but both are eager to start the spring season and help the team to a strong Patriot League finish. Baffa saw action at the No. 6 spot in five dual-meet singles matches last season and went 3-2. In doubles, she was primarily paired with Gaskin as the No. 3 duo, and finished with a mark of 1-4.

Paulina Gamboa, JoAnna Grossman, Ashley Globerman, Camille Simonetti and Tiffany Card are the five newcomers on the squad, with each individual hoping to make an impact on Bucknell tennis. Each player had a very successful fall, turning in a combined record of 32-23 in singles. Gamboa, along with Brown, made an appearance at the ITA Regionals, while Card was the sole Bison to win a championship, as she won Flight D at the Bucknell Invitational.

2005-06 WOMEN'S TENNIS ROSTER

Name	Cl.	Hometown/High School
Caitlin Baffa	So.	Dix Hills, N.Y./Half Hollow Hills East
Veronica Brown	Sr.	Derwood, Md./Colonel Zadok Magruder
Tiffany Card	Fr.	Little Silver, N.J./Red Bank Regional
Renee Clinton	Jr.	Chevy Chase, Md./Stone Ridge Country Day
Paulina Gamboa	Fr.	Mexico City, Mexico/Greengates School
Rheanna Gaskin	Sr.	Gaithersburg, Md./Colonel Zadok Magruder
Ashley Globerman	Fr.	New City, N.Y./Clarkstown
JoAnna Grossman	Fr.	Florham Park, N.J./Hanover Park
Chelsea Mills	Sr.	Wellesley, Mass./Wellesley
Kelly Porter	Jr.	Chappaqua, N.Y./Sacred Heart Covenant
Camille Simonetti	Fr.	Fairport, N.Y./Fairport



Veronica Brown
Derwood, Md.
Colonel Zadok Magruder
Senior Captain



Brown's Career Dual Singles Stats							
Year	#1	#2	#3	#4	#5	#6	Total
2002-03	4-3	23-6	0-0	0-0	0-0	0-0	27-9
2003-04	8-4	6-2	0-0	0-0	0-0	0-0	14-6
2004-05	0-0	5-3	8-3	1-0	0-0	0-0	14-6
Career	12-7	34-11	8-3	1-0	0-0	0-0	55-21

Brown's Career Dual Doubles Stats				
Year	#1	#2	#3	Total
2002-03	20-11	0-0	0-0	20-11
2003-04	8-5	0-1	2-1	10-7
2004-05	20-2	0-0	0-0	20-2
Career	48-18	0-1	2-1	50-20

2004-05: Received First Team All-Patriot League recognition ... was a member of the PL Academic Honor Roll ... turned in a dual match singles record of 14-6, primarily in the two and three positions ... in doubles dual matches, went 20-2 with Nada Curcic in the No. 1 position ... ranked among Bucknell's all-time best records in singles, doubles and combined career records. **2003-04:** Finished the season with a 14-6 singles record in dual matches including an 8-4 showing in the No. 1 position and a 6-2 record at the second-spot ... currently seventh on the all-time victories list at 71-33 ... went 10-7 in dual-doubles action going 5-3 in the first position with partner Tanya Sichko ... went 5-4 in tournament singles play ... named to the Patriot League Academic Honor Roll. **2002-03:** Won Patriot League's Co-Rookie of the Year and second-team league honors and PL Player of the Month for March ... won PL flight two singles title ... compiled a 27-9 record as a freshman, playing mostly at the two spot (23-6) as well as at the one spot (4-3) ... played all her doubles matches at the one spot, going 20-11, mostly with Nada Curcic (15-6) and also with high school teammate Rheanna Gaskin (5-5) ... climbed onto Bucknell's overall singles-doubles top-20 all-time list in just one year with her 47-20 overall record. **Personal:** Daughter of Ronald and Elizabeth Brown ... earned fourth in Maryland state tournament in 2000 ... four-year all-county player ... accounting major ... ranked 164th by the USTA and 20th by the MATA.

2005-06 Women's Profiles

Gaskin's Career Dual Singles Stats							
Year	#1	#2	#3	#4	#5	#6	Total
2002-03	0-0	2-1	1-0	4-2	14-3	0-0	21-6
2003-04	0-6	6-3	3-0	0-0	0-0	0-0	9-9
2004-05	0-0	0-0	0-0	0-0	9-8	2-0	11-8
Career	0-6	8-4	4-0	4-2	23-11	2-0	41-23

Gaskin's Career Dual Doubles Stats				
Year	#1	#2	#3	Total
2002-03	5-5	6-4	4-3	15-12
2003-04	1-5	5-0	3-0	9-5
2004-05	0-0	0-1	10-7	10-8
Career	6-10	11-5	17-10	34-25

Rheanna Gaskin
 Gaithersburg, Md.
 Colonel Zadok Magruder
 Senior Captain



2004-05: Played in 19 dual singles matches, 17 in the fifth position, going 11-8 overall ... in dual doubles matches, played in 18 matches, primarily in the No. 3 spot with Chelsea Mills (6-2) and Daniella Shtemberg (4-2) ... in tournament play, went 5-6 in singles, and 3-3 in doubles ... ranked among Bucknell's all-time best records in singles, doubles and combined career records. **2003-04:** Played the majority of her matches in the second position going 6-3 in dual-meet singles on the year ... also went 10-6 in tournament play ... ranked 18th on the all-time dual-match win list with 56 combined singles and doubles wins ... went undefeated with a 9-0 record with partner Samantha Berthod in dual-match doubles. **2002-03:** Went 21-6 in singles, playing most often at the fifth spot and posting a 14-3 mark there ... went 15-12 in doubles, splitting time almost equally between high school teammate Veronica Brown at No. 1 (5-5), Tanya Sichko at No. 2 (6-4), and Samantha Berthod at No. 3 (4-3). **Personal:** Daughter of John and Rita Gaskin ... graduate of Colonel Zadok Magruder High School in Rockville, Md. ... sociology major ... rated 21st by the MATA.



Chelsea Mills
 Wellesley, Mass.
 Wellesley
 Senior Captain



Mills' Career Dual Singles Stats							
Year	#1	#2	#3	#4	#5	#6	Total
2002-03	0-0	0-0	0-0	3-1	0-0	4-2	7-3
2003-04	0-0	0-0	0-0	1-0	5-0	10-3	16-3
2004-05	0-0	0-0	0-0	3-1	2-1	10-2	15-4
Career	0-0	0-0	0-0	7-2	7-1	24-7	38-10

Mills' Career Dual Doubles Stats				
Year	#1	#2	#3	Total
2002-03	0-0	2-0	4-2	6-2
2003-04	1-0	4-2	7-1	12-3
2004-05	0-0	5-2	7-2	12-4
Career	1-0	11-4	18-5	30-9

2004-05: Was a member of the Patriot League Academic Honor Roll ... went 15-4 in singles dual matches, mainly in the sixth slot (10-2), for the team's second-highest record ... in dual doubles matches, went 12-4, mainly with Tanya Sichko (No. 2, 6-2) and Rheanna Gaskin (No. 3, 6-2) ... in tournament play, compiled a record of 8-5 in singles and 4-2 in doubles ... ranked among Bucknell's all-time best records in singles, doubles and combined career records. **2003-04:** Won the team MVP award after finishing the season with a 26-8 singles record, a team-high for wins ... saw the most time at the sixth position posting a 10-3 record ... went 12-3 in dual-meet doubles action ... tied with Rheanna Gaskin for most tournament singles wins with 10. **2002-03:** Played at the fourth and sixth positions, going 3-1 at the four spot and 4-2 at the six spot ... went 6-2 in doubles, splitting time between Tanya Sichko at the two spot (2-0), and Samantha Berthod (3-1) and Rebecca Kral (1-1) at the three spot. **Personal:** Daughter of Craig and Connie Mills ... earned eight letters at Wellesley High between tennis (four), volleyball (three), and track (one) ... two-time Most Valuable Player on her tennis team and one-time MVP on the volleyball team ... psychology major.

Clinton's Career Dual Singles Stats							
Year	#1	#2	#3	#4	#5	#6	Total
2003-04	0-0	0-0	0-0	0-0	0-0	0-1	0-1
2004-05	0-0	0-0	0-0	0-0	0-0	0-0	0-0
Career	0-0	0-0	0-0	0-0	0-0	0-1	0-1

Clinton's Career Dual Doubles Stats				
Year	#1	#2	#3	Total
2003-04	0-0	0-0	0-1	0-1
2004-05	0-0	0-0	0-0	0-0
Career	0-0	0-0	0-1	0-1

Renee Clinton
 Chevy Chase, Md.
 Stone Ridge Country Day
 Junior



2004-05: Was a member of the Patriot League Academic Honor Roll ... turned in a tournament record of 3-2 in singles, and in doubles, went 2-1. **2003-04:** Participated in one dual-singles and one dual-doubles match ... picked up one tournament victory ... saw action in five doubles tournament matches. **Personal:** Daughter of William and Sharon Clinton ... received eight varsity letters in tennis at Stone Ridge Country Day ... team captain during junior and senior years ... management major.

2005-06 Women's Profiles/2004-05 Dual Match Results



Kelly Porter
 Chappaqua, N.Y.
 Covenant of the Sacred Heart
 Junior



Porter's Career Dual Singles Stats							
Year	#1	#2	#3	#4	#5	#6	Total
2003-04	0-0	0-0	0-0	0-0	0-0	0-0	0-0
2004-05	0-0	0-0	0-0	0-0	0-0	0-0	0-0
Career	0-0	0-0	0-0	0-0	0-0	0-0	0-0

Porter's Career Dual Doubles Stats				
Year	#1	#2	#3	Total
2003-04	0-0	0-0	0-2	0-2
2004-05	0-0	0-0	0-1	0-1
Career	0-0	0-0	0-3	0-3

2004-05: Was a member of the Patriot League Academic Honor Roll ... saw action in one dual doubles match, partnered with Jill Merselis ... turned in a tournament singles record of 2-4 and a doubles total of 3-3. **2003-04:** Played in two dual-meet doubles matches ... picked up two tournament doubles wins when teamed with Jill Merselis ... also won two singles tournament matches. **Personal:** Daughter of Thomas and Susan Porter ... lettered in both tennis and swimming in high school while attending the Covenant of the Sacred Heart ... two year all-league selection ... economics major.

Baffa's Career Dual Singles Stats							
Year	#1	#2	#3	#4	#5	#6	Total
2004-05	0-0	0-0	0-0	0-0	0-0	3-2	3-2
Career	0-0	0-0	0-0	0-0	0-0	0-0	3-2

Baffa's Career Dual Doubles Stats				
Year	#1	#2	#3	Total
2004-05	0-0	0-0	1-4	1-4
Career	0-0	0-0	1-4	1-4

2004-05: Played in five dual singles matches in the No. 6 slot and turned in a record of 3-2 ... saw action in five doubles matches in the No. 3 position, primarily partnered with Rheanna Gaskin, and turned in a record of 1-4. **Personal:** Had an ETA ranking of 48 ... is majoring in accounting ... is the daughter of William and Arlene Baffa.

Caitlin Baffa
 Dix Hills, N.Y.
 Half Hollow Hills East
 Sophomore



2005-06 Newcomers



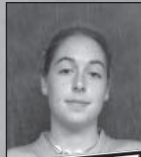
Paulina Gamboa
 Mexico City, Mexico
 Greengates School
 Freshman
 Mexico Ranking: 8
 ITF Ranking: 298



Ashley Globerman
 New City, N.Y.
 Clarkstown
 Freshman
 ETA Ranking: 10
 USTA Ranking: 210



Camille Simonetti
 Fairport, N.Y.
 Fairport
 Freshman



Tiffany Card
 Little Silver, N.J.
 Red Bank Regional
 Freshman



JoAnna Grossman
 Florham Park, N.J.
 Hanover Park
 Freshman



2004-05 DUAL SEASON RESULTS (17-5 overall, 4-1 PL)			
Date	Opponent	BU	Opp.
2/12	Quinnipiac	4	3
2/19	St. Bonaventure	7	0
3/4	Duquesne	5	2
3/5	Pittsburgh	4	3
3/11	Seton Hall	4	3
3/13	vs. Stephen F. Austin #	2	5
3/14	vs. Winona State #	7	0
	vs. Cleveland State #	7	0
3/15	vs. Eckerd College #	8	1
3/26	American*	7	0
3/31	Villanova	7	0
4/2	Army*	1	6
4/5	Lehigh*	4	3
4/8	Colgate*	6	1
4/10	Lafayette*	7	0
4/13	UMBC	2	4
4/16	Lehigh*%	4	1
4/17	Army*&	0	4
4/19	Binghamton	3	4
4/20	Bloomsburg	7	0
4/24	Delaware	5	2

* Patriot League match % Patriot League Tournament
 # Spring Break Trip in Orlando, Fla. & Patriot League Championship
 Home matches in **BOLD**

2004-05 DUAL MATCH SINGLES STATISTICS							
Player	#1	#2	#3	#4	#5	#6	Tot.
Veronica Brown	8-4	6-2					14-6
Nada Curcic	1-0	2-0	12-1	1-0			16-1
Tanya Sichko	1-0	0-1	2-2	9-1	2-1		14-5
Rheanna Gaskin	0-6	6-3	3-0				9-9
Sam Berthod				5-3	5-6	1-0	11-9
Chelsea Mills				1-0	5-0	10-3	16-3
Rebecca Kral					0-1	4-1	4-2
Renee Clinton						0-1	0-1
Totals	10-10	14-6	17-3	16-4	12-8	15-5	84-36

2004-05 DUAL MATCH DOUBLES STATISTICS				
Player	#1	#2	#3	Tot.
Baffa/Mills			1-0	1-0
Baffa/Gaskin			0-3	0-3
Baffa/Sichko			0-1	0-1
Brown/Curcic	20-2			20-2
Gaskin/Mills		0-1	6-2	6-3
Gaskin/Shtemberg			4-2	4-2
Mills/Sichko		5-2	0-0	5-2
Shtemberg/Sichko		5-6	0-0	5-6
Merselis/Porter			0-1	0-1
Totals	20-2	10-9	11-9	41-20

ALL-TIME OPPONENTS

Opponent	Won	Lost	Tie	1st Met
American	2	5	0	1982
Army	4	17	0	1990
Austin Peay	1	0	0	1999
Binghamton	0	2	0	2003
Bloomsburg	28	8	0	1974
Bradley	0	1	0	1998
Buffalo	2	0	0	1999
Catholic University	2	0	0	1980
Clarion	0	2	0	1988
Cleveland State	4	0	0	1989
Colgate	8	18	0	1977
Delaware	11	14	0	1980
Drexel	9	3	0	1982
Duquesne	7	1	0	1983
East Stroudsburg	7	1	0	1974
Eckerd	1	0	0	2005
Elizabethtown	5	8	0	1975
Evansville	1	0	0	2003
Fairfield	1	1	0	1995
Fordham	4	1	0	1991
Franklin & Marshall	11	7	0	1975
George Mason	2	1	0	1985
Georgetown	0	1	0	1999
Gettysburg	5	3	0	1975
Hamilton	1	0	0	2004
Hofstra	4	0	0	1989
Holy Cross	9	0	0	1991
Indiana State	0	1	0	2002
Iowa state	0	1	0	1998
IPFW	2	0	0	2002
James Madison	0	1	0	1981
Juniata	8	0	0	1976
Lafayette	13	17	1	1978
LaSalle	5	0	0	1991
Lehigh	14	22	0	1977
Lock Haven	11	3	0	1975
Long Island	1	0	0	2004
Loyola (Md.)	3	2	0	2001
Lycoming	8	0	0	1974
Marshall	2	0	0	1990
Mary Washington	0	5	0	1982
Merrimack	1	0	0	1998
Millersville	8	1	0	1984
Missouri-Kansas City	1	0	0	2000
Mount St. Mary's	8	1	0	1993
Niagara	1	0	0	2003
Penn State	0	10	0	1979
Pittsburgh	13	6	0	1981
Quinnipiac	1	2	0	2000
Radford	1	0	0	2002
Rider	2	0	0	1989
Rutgers	0	4	0	1981
St. Bonaventure	6	1	0	2000
St. Francis (Pa.)	10	0	0	1990
St. Joseph's (Pa.)	7	0	0	1994
Seton Hall	1	3	0	1992
SE Missouri State	1	0	0	2000
Southern Miss.	0	1	0	2002
Stephen Austin	0	1	0	2005
Susquehanna	5	0	0	1975
Temple	1	2	0	1982
Towson	12	2	0	1982
UMBC	4	5	0	1990

Opponent	Won	Lost	Tie	1st Met
Univ. of the South	0	1	0	2000
Vassar	1	0	0	2003
Vermont	1	0	0	2003
Villanova	7	2	0	1995
Va. Commonwealth	1	0	0	1981
West Virginia	0	6	0	1984
Wilkes	4	0	0	1975
William & Mary	1	1	0	1981
William Smith	4	0	0	1981
Winona State	1	0	0	2005
Total	315	200	1	(.611 win %)

2005-06 opponents in bold

ALL-TIME RESULTS

Year	Record			Head Coach
	W	L	T	
1973-74	6	2	0	Nora Elze
1974-75	4	3	0	Nora Elze
1975-76	5	4	0	Nora Elze
1976-77	9	2	0	Nora Elze
1977-78	10	3	0	Nora Elze
1978-79	7	5	0	Nora Elze
1979-80	4	7	0	Rose Ewan
1980-81	11	7	0	Rose Ewan
1981-82	11	7	0	Rose Ewan
1982-83	13	5	1	Rose Ewan
1983-84	12	6	0	Rose Ewan
1984-85	9	13	0	Rose Ewan
1985-86	9	10	0	Rose Ewan
1986-87	8	9	0	Rose Ewan
1987-88	3	12	0	Rose Ewan
1988-89	8	9	0	Rose Ewan
1989-90	9	6	0	Rose Ewan
1990-91	11	2	0	Rose Ewan
1991-92	16	1	0	Rose Ewan
1992-93	12	1	0	Rose Ewan
1993-94	10	4	0	Rose Ewan
1994-95	15	1	0	Rose Ewan
1995-96	11	6	0	Rose Ewan
1996-97	9	6	0	Rose Ewan
1997-98	16	9	0	Rebecca Helt
1998-99	7	14	0	Rebecca Helt
1999-00	5	10	0	Rebecca Helt
2000-01	4	12	0	Rebecca Helt
2001-02	12	9	0	Rebecca Helt
2002-03	16	6	0	Rebecca Helt
2003-04	16	4	0	Rebecca Helt
2004-05	17	5	0	Rebecca Helt
Overall:	315	200	1	(.611 win %)

ALL-TIME COACHES LOG

Year(s)	Name	Record
1997-	Rebecca Helt	93-69
1979-97	Rose Ewan	181-112-1
1973-79	Nora Elze	41-19
Total		315-200-1

**CAREER BEST - TOP 20
SINGLES**

	<u>Name</u>	<u>Singles</u>
1.	Tanya Sichko, 2001-05	86-40
2.	Nada Curcic, 2001-05	79-36
3.	Veronica Brown, 2002-pres.	67-35
4.	Chelsea Mills, 2002-pres.	63-22
5.	Rheanna Gaskin, 2002-pres.	61-39
	Samantha Berthod, 2000-04	61-43
7.	Kristina Lutter, 1991-94	50-8
8.	Karen Stagliano, 1988-91	47-7
9.	Sara Allen, 1992-95	45-12
10.	Kymm Carlson, 1990-93	43-12
11.	Lauren Weihl, 1992-95	40-18
12.	Michelle Miller, 1981-85	36-15
13.	Mary Ann Benack, 1988-91	35-25
14.	Patty Koch, 1979-82	34-9
	Julia Diaz, 1991-94	34-11
	Mary Syrokwash, 1981-85	34-29
17.	Stephanie Ryer, 1987-90	32-19
18.	Lauren Weihl, 1992-94	31-11
	Katie Roland, 1995-99	31-28
20.	Louise King, 1975-78	30-7
	Valerie Adelson, 1981-84	30-10

**CAREER BEST - TOP 20
DOUBLES**

	<u>Name</u>	<u>Doubles</u>
1.	Nada Curcic, 2001-05	77-27
2.	Veronica Brown, 2002-pres.	70-31
3.	Tanya Sichko, 2001-05	62-30
4.	Samantha Berthod, 2000-04	45-32
6.	Rheanna Gaskin, 2002-pres.	45-32
6.	Chelsea Mills, 2002-pres.	44-18
7.	Kristina Lutter, 1991-94	41-7
	Kim Regester, 1981-85	41-14
9.	Cindy Appel, 1979-83	39-13
10.	Karen Stagliano, 1988-91	38-11
11.	Michelle Miller, 1981-85	37-13
12.	Jill Wurzburg, 2000-03	30-35
13.	Patty Koch, 1979-82	28-3
	Wendi Hipkins, 1981-85	28-12
	Lauren Weihl, 1992-95	28-14
16.	Julia Diaz, 1991-94	26-6
	Kymm Carlson, 1990-93	26-9
	Sara Allen, 1992-95	26-13
	Kerry Callaghan, 1996-00	26-16
	Mary Ann Benack, 1988-91	26-19

**CAREER BEST - TOP 30
VICTORIES**

	<u>Name</u>	<u>Singles</u>	<u>Doubles</u>	<u>Total</u>
1.	Nada Curcic, 2001-05	79-36	77-27	155-63
2.	Tanya Sichko, 2001-05	86-40	62-30	148-70
3.	V. Brown, 2002-pres.	67-35	70-31	137-66
4.	S. Berthod, 2000-04	61-43	45-32	106-75
5.	Chelsea Mills, 2002-pres.	63-22	44-18	107-40
6.	R. Gaskin, 2002-pres.	61-39	45-32	106-71
7.	Kristina Lutter, 1991-94	50-8	41-7	91-15
8.	Karen Stagliano, 1988-91	47-7	38-11	85-18
9.	Michelle Miller, 1981-85	36-15	37-13	73-28
10.	Sara Allen, 1992-95	45-12	26-13	71-25
11.	Kymm Carlson, 1990-93	43-12	26-9	69-21
12.	Lauren Weihl, 1992-95	40-18	28-14	68-32
13.	Cindy Appel, 1979-83	28-31	39-13	67-44
14.	Patty Koch, 1979-82	34-9	28-3	62-12
15.	M.A. Benack, 1988-91	35-25	26-19	61-44
16.	Julia Diaz, 1991-94	34-11	26-6	60-17
	Jill Wurzburg, 1999-03	29-46	30-35	59-81
18.	Stephanie Ryer, 1987-90	32-19	24-20	56-39
19.	Katie Roland, 1995-99	31-28	24-15	55-43
20.	Mary Syrokwash, 1981-85	34-29	20-29	54-58
21.	Wendi Hipkins, 1981-85	24-14	28-12	52-26
22.	Kerry Callaghan, 1996-00	24-21	26-16	50-37
23.	Sarah Palmer, 1983-87	22-31	23-26	45-57
24.	Louise King, 1975-78	30-7	13-2	43-9
25.	Kim Regester, 1981-85	1-0	41-14	42-14
	Sarah Krieger, 1980-82	19-15	23-10	42-25
27.	Janis Huber, 1977-81	26-20	15-6	41-26
	Tracy Honko, 1996-00	24-23	17-13	41-36
29.	M. Guttman, 1981-85	24-10	16-4	40-14
	Diana Burns, 1978-80	29-13	11-5	40-18

* Statistics include tournament and dual matches through Fall 2005



Nada Curcic currently holds the best all-time career record for both doubles and singles combined.

CAPTAINS

1976-77	Jody Campana
1977-78	Louise King
1978-79	Dawn Burke
1979-80	Diane Burns, Donna Burns
1980-81	Janis Huber, Kirsten Schubauer
1981-82	Patty Koch, Sarah Krieger
1982-83	Cindy Appel, Lisa Smails
1983-84	Laura Kirschstein, Lisa Smails
1984-85	Wendi Hipkins, Mary Syrokwash
1985-86	Sarah Palmer
1986-87	Sarah Palmer
1987-88	Cynthia Bentley
1988-89	Cynthia Bentley
1989-90	Laurie French
1990-91	Stephanie Ryer
1991-92	Mary Ann Benack, Karen Stagliano
1992-93	Kymm Carlson
1993-94	Kymm Carlson, Julia Diaz
1994-95	Julia Diaz, Kristina Lutter, Christine McMillan
1995-96	Sara Allen, Adina Junge, Lauren Weihl
1996-97	Rebecca Korb, Susan Vincent
1997-98	Wendy Eason, Laura Grossman
1998-99	Katie Roland
1999-00	Kerry Callaghan, Tracy Honko
2000-01	Kristin Inglis, Kary Wolford
2001-02	Kristin Inglis, Jill Wurzburg
2002-03	Samantha Berthod
2003-04	Samantha Berthod
2004-05	Nada Curcic, Tanya Sichko
2005-06	Veronica Brown, Rheanna Gaskin, Chelsea Mills

ACADEMIC HONORS

ESPN THE MAGAZINE ACADEMIC ALL-AMERICANS

<u>Year</u>	<u>Name</u>
1994-95	Kristina Lutter
1993-94	Kristina Lutter

PATRIOT LEAGUE SCHOLAR-ATHLETE

<u>Year</u>	<u>Name</u>
1995-96	Wendy Eason
1994-95	Kristina Lutter
1993-94	Kristina Lutter

ITA SCHOLAR-ATHLETE

<u>Year</u>	<u>Name</u>
2005	Chelsea Mills
2004	Chelsea Mills
2003	Samanth Berthod Jill Wurzburg
2000	Kerry Callaghan

ALL-PATRIOT LEAGUE

SINGLES

<u>Year</u>	<u>Name</u>
2004-05	Tanya Sichko Veronica Brown
2003-04	Nada Curcic
2002-03	Veronica Brown
1996-97	Kerry Callaghan
1995-96	Blakely Lauria
1994-95	Emily Glassmeyer
1993-94	Sara Allen
1992-93	Sara Allen

DOUBLES

<u>Year</u>	<u>Name</u>
1999-00	Kerry Callaghan/Kristin Inglis
1995-96	Laura Leslie/Kristin Jones
1994-95	Lauren Weihl/Sara Allen
1993-94	Julia Diaz/Kristina Lutter
1992-93	Kristina Lutter/Kymm Carlson

ROOKIE OF THE YEAR

<u>Year</u>	<u>Name</u>
2002-03	Veronica Brown

PLAYER OF THE YEAR

<u>Year</u>	<u>Name</u>
2004-05	Nada Curcic

PATRIOT LEAGUE ALL-DECADE TEAM

PATRIOT LEAGUE ALL-DECADE TEAM (1990-2000)

<u>Name</u>	<u>School</u>	<u>Class</u>
Jennifer Blatty	Army	2000
Kelly Breen	Colgate	1990
Julia Diaz	Bucknell	1995
Leslie Frank	Colgate	1997
Sam Kohn	Colgate	1999
Kristi Kungl	Lehigh	1993
Kim Luff	Lehigh	2000
Erynn Macktool	Lafayette	1993
Sue Monajati	Colgate	1994
Monica Yurconic	Lafayette	1994



Two-time All-Patriot League honoree Veronica Brown was named the league's Rookie of the Year in 2003.

Bucknell University Tennis Program Mission Statement

The Bucknell Tennis program is intended to encourage **personal and physical development, respect** for colleagues, **teamwork, ethical and responsible behavior** on the court and off, **leadership and strength of character, perseverance, integrity,** and **sportsmanship** -- including respect of one's opponents, acceptance of victory with humility, and acknowledgment of defeat with grace.

Our "student-athletes" can expect a first rate athletic experience at the NCAA Division I level coupled with the opportunity to receive a degree from one of the top liberal arts and engineering institutions in the country.

Bucknell University's athletic programs strive to prepare student-athletes for productive careers and lifelong learning by stressing the importance of degree completion and the development of personal, physical and intellectual skills.

Participation in the tennis program will create learning opportunities that directly parallel your education at Bucknell. You will learn to work with your team toward common goals; you will learn to expand self-imposed limitations; and you will learn there is no such thing as "I can't". Perhaps the most important thing you will learn is that "**Commitment**" comes from within; "**Commitment**" is a decision that **you** make; "**Commitment**" is what it takes to be successful in the Bucknell tennis program.

TENNIS ALUMNI IN BUCKNELL'S ATHLETIC HALL OF FAME

The following former men's tennis players have been inducted into Bucknell's Athletic Hall of Fame.

Alexander Anderson ('71): A three-year letterman in tennis and captain his senior year. Anderson had a career singles record of 38-2. He continues to hold the school record for consecutive match victories at 33, and is third in career match winning percentage at .950. Anderson entered the Hall of Fame with the Class of 1999.

Thomas A. Thompson ('60): A three-year starter in baseball and basketball and captain of both teams, Thompson pitched in the Detroit Tigers system and has coached baseball, basketball, golf and tennis teams at Bucknell. Thompson entered the Hall of Fame with the Class of 1986.

Stephen W. Baird ('72): The 1971 MAC fall tennis champion, Baird was an Eastern singles semifinalist and doubles finalist in 1972 and had a career 38-1 singles record. President of the American Platform Tennis Association, Baird is a five-time national champion in the sport. Baird entered the Hall of Fame with the Class of 1983.

Malcolm E. Musser ('18): A basketball and tennis player as an undergraduate and later varsity basketball coach and freshman football and baseball coach, Musser probably coached, taught and watched more Bucknell athletes than any other person. Musser entered the Hall of Fame with the Class of 1979.

Ed Hess ('90): One of the best tennis players in Bucknell history, Hess holds the school record for singles victories at 60, while accumulating only three singles losses during his career. He stands second on the singles-doubles combined win list at 101, just one behind the record holder, and is sixth on Bucknell's all-time doubles victories list. Hess won the East Coast Conference singles title in 1987, 1989, and 1990, in addition to two conference doubles titles. His teams won three ECC team championships, posting a 38-12 record in those seasons. Hess entered the Hall of Fame with the Class of 2003.

The following former women's tennis player has been inducted into Bucknell's Athletic Hall of Fame.

Marjorie A. Deck ('73): Co-captain of the field hockey and basketball teams, Deck was also undefeated in tennis dual matches in her career and ranked fifth in the East as a senior. Deck is often referred to as one of the pioneers of women's tennis at Bucknell having played on the team before women's sports gained varsity status in the fall of 1973. Women's tennis was given varsity status only months after Deck's graduation. Her success on the club team had much to do with the upgrade of women's tennis to varsity status. Deck entered the Hall of Fame with the Class of 1989.

LIFE AFTER BUCKNELL

According to a Bucknell Career Development Center survey of the Class of 2004, six months after graduating, 96% of Bucknell's Class of 2004 were either employed or admitted to graduate and/or professional schools. Of the 855 graduates, 809 (95%) responded to a survey administered by the Career Development Center. Among those responding, 67% were employed, 24% were pursuing graduate studies, 4% were employed and attending graduate school, 1% listed "other" as their post-graduate activity and only 4% were still seeking employment.

Of those reporting employment, 59% were in the field of business, 15% in education, 10% in non-profit, 7% were in re-

search & industry, and 4% in government related jobs. Geographically, the Northeast employed 76% of our graduates, while 3% were employed abroad.

For the Class of '04, the mean salary was \$40,639. In breakdown by degree, the College of Engineering mean salary was \$47,770; a Bachelor of Science in Business Administration mean salary was \$42,094; and the College of Arts & Sciences mean salary was \$38,719.

From the Class of '04, 21% secured employment through on-campus interviews, and/or previous employers. Some of the most popular employers were AmeriCorps, Bear Stearns & Co., Inc., Deloitte, Gen-

eral Electric, J.P. Morgan Chase, KPMG, Lockheed Martin, Lord & Taylor, Northrop Grumman, Price-waterhouse Coopers, Prudential, U.S. Army and UBS.

For those enrolled in graduate programs, the breakdown was as follows: 24% Humanities & Social Science, 21% Law, 10% Engineering, 9% Medical, 8% Science, 6% Allied Health and 4% Business.

DID YOU KNOW?

Bucknell ranks 25th in academic reputation among all national liberal arts colleges, according to a survey of college presidents and deans. The engineering program is ranked as the eighth top undergraduate engineering program among non-Ph.D.-granting schools.

CAREER DEVELOPMENT CENTER

The Career Development Center at Bucknell supports the University's commitment to preparing productive citizens for our global community by educating our students in how to bridge their educational and life experiences with their life long professional goals successfully. They accomplish this by promoting self-sufficiency through educating students in the process of making well-informed and thoughtful decisions and by providing high-quality resources, diverse opportunities, and meaningful experiences.

The Career Development Center at Bucknell is a comprehensive career center offering services and programs that are relevant to both undergraduate and graduate students of the University. Assistance is available for such issues such as: self-assessment and career decision-making, the development of job search tools, preparing for interviews, resources for conducting employment and graduate school research and internship and full-time employment leads.

Currently the staff consists of seven full-time staff, two part-time staff, a student research & events assistant and nine peer consultant staff.

Post Grad Activity

Total Placed	96%
Employed	67%
Grad. School	24%
Empl. & Grad. School	4%
Other	1%

Still Seeking **4%**

Type of Employer

Business	59%
Education	15%
Non-Profit	10%
Research/Industry	7%
Government	4%
Unknown/Other	3%

Starting Salaries

Class '04 Mean	\$40,639
Engineering	\$47,770
B.S., Business Admin.	\$42,094
Arts & Science	\$38,719

How Job Was Secured

Cold Calls	21%
On Campus Interview	15%
Previous Employer	6%
Alumni/Faculty Contact	4%

Graduate School

Social Science/Human.	23%
Law	19%
Engineering	16%
Education	9%
Science	9%
Allied Health	8%
Medical	7%

FACULTY JOIN COACHING RANKS: BUCKNELL'S UNIQUE SIDELINE COACHING PROGRAM

One of the special programs that Bucknell offers in order to enhance the student-athlete's overall experience at the University is the Faculty-Administrator Sideline Program. The program involves a member of the faculty or administration at Bucknell being invited by one of the 27 varsity teams to become a part of the team's contest preparation by being involved in all aspects of the program, including game-day activities.

The faculty participant will discuss the overall program with the respective coaching staff, including recruiting philosophy and strategy for the upcoming contest. The sideline coach will attend a practice session where he/she will be introduced to the team and gain a truly unique insight into the relationships that exist between player-coach and player-player. In addition, the practice session allows the participant to learn coaching techniques, strategy, terminology, and the athletes' true enthusiasm for the sport.

The participant will then attend the actual intercollegiate contest itself and be a part of the total event from pre-contest to post-contest, through timeout discussions and halftime teaching-learning methodology.

The purpose of the Faculty Sideline Program is to foster a better understanding by the faculty and administration of the roles played by coaches and athletes in the University's intercollegiate athletic arena.

DID YOU KNOW?

- Half of the classes at Bucknell have 16 students or fewer.
- All classes are taught by professors, not graduate assistants.
- Student-Faculty ratio is 12-to-1.
- Bucknell's retention rate is 95%.

THE ABC'S OF THE RECRUITING PROCESS

ADMISSIONS & APPLICATIONS

You can reach our Admissions Office by calling (570) 577-1101. To receive an application, please call our admissions office or send a written request to: Bucknell Admissions Office, Freas Hall, Bucknell University, Lewisburg, PA 17837.

CALENDAR

A typical recruiting calendar for a prospective student-athlete interested in tennis would go something like this:

**** Junior Year** -- contact Head Coach Rebecca Helt if Bucknell falls within your top five list of potential colleges. Send a letter expressing interest in the tennis program. It would be helpful to include a transcript. Also, the student-athlete should be registered with the NCAA Clearinghouse. See your high school athletics director or guidance counselor for information.

**** Summer of 2006** -- make unofficial visits to schools of interest.

**** September of 2006** -- Head Coach Rebecca Helt will be in contact regarding student-athlete's interest and possible visit date. Student-athlete and family should file CSS Financial Aid Profile Form available October 15. See your college guidance counselor for information.

**** November 15, 2006** — Deadline for Admissions and Financial Aid for Early Decision I.

**** Late December, 2006** — Target date for Admissions letters to go out for Early Decision I candidates.

**** January 1, 2007** — Deadline for Admissions and Financial Aid for Regular Decision and Early Decision II.

**** Late January, 2007** — Target date for Admissions decision letters to go out for Early Decision II candidates.

**** Late March, 2007** -- Target date for Admissions decision letters to go out for Regular Decision candidates.

**** Mid-April, 2007** -- Target date for open house weekend for all accepted applicants.

**** May 1, 2007** -- Deadline for securing spot in class of 2010 with deposit.

CLEARINGHOUSE

The NCAA mandates that all student-athletes interested in competing at the Division I or II level be certified through the NCAA Initial Eligibility Clearinghouse. Contact high school coaches, athletics director and/or guidance counselor for necessary paperwork.

CONTACTS

As per NCAA by-law 13.02.3, a contact is any face-to-face encounter between a prospect or the prospect's parent or legal guardian and an institutional staff member or athletics representative during which any dialogue occurs in excess of an exchange of a greeting. Any such face-to-face encounter that is prearranged or takes place on the grounds of the prospect's high school, or at the site of organized competition or practice involving the prospect's high school, preparatory school, two-year college, or all-star team is considered a contact, regardless of the conversation that occurs. We are limited to three off-campus contact days per prospective student-athlete.

CORRESPONDENCE

It's important that the prospective student-athlete get in touch with Head Coach Rebecca Helt as soon as possible. A simple letter of inquiry or email to helt@bucknell.edu into the tennis program will initiate the recruiting process. In the spring of your junior year is the most appropriate time to contact Coach Helt.

ADMISSIONS DEADLINES

November 15, 2006 — Early Decision I Application and Financial Aid deadline

January 1, 2007 — Early Decision II and Regular Decision Application and Financial Aid deadline

EARLY DECISION

Students who are absolutely, 100% confident Bucknell is their top college choice are encouraged to apply during the Early Decision process. Advantages are that you'll have an Admissions decision prior to Christmas and all students accepted during the early decision process are guaranteed financial aid for which they qualify.

EVALUATIONS

As per NCAA by-law 13.02.6.1, an evaluation is any off-campus activity designed to assess the academic qualifications or athletic ability of a prospect, including any visit to a prospect's educational institution (during which no contact occurs) or the observation of a prospect participating in any practice or competition at any site. We are limited in our number of evaluations per prospective student-athlete.

FINANCIAL AID

Bucknell University does not offer athletic scholarships in the sport of tennis. All financial aid is awarded on the basis of need. Prospective student-athletes should complete the CSS "Profile Form" in the early Fall.

INTERVIEWS

Head Coach Rebecca Helt strongly encourages all prospective student-athletes to arrange for an on-campus interview with the Admissions Office. If it is not possible to interview on campus, alumni interviews are highly recommended. All interviews should be arranged through the Admissions Office by calling (570) 577-1101.

TELEPHONE CALLS

As per NCAA by-law 13.1.3.1, institutional staff members may not telephone a prospect (or the prospect's relatives or legal guardians) prior to July 1 following the prospect's completion of the junior year in high school. However, the prospect can call the tennis office at any time. After July 1, institutional staff members may telephone a prospect once per week (measured Sunday through Saturday). The once-per-week limit applies to the entire institution.

VISITS, Official

According to NCAA by-law 13.7.1.2, a prospect may not make more than five expense-paid visits to NCAA member institutions, regardless of the number of sports in which the prospect is involved. An institution may not provide an expense-paid visit to a prospect who has not presented the institution with a high school (or college) academic transcript and a score from a PSAT, an SAT, a PACTPlus, or an ACT test taken on a national testing date under national testing conditions. The official visit may not exceed 48 hours. Coach Helt encourages these visits take place from September 1 to February 15.

VISITS, Unofficial

According to NCAA by-law 13.8.1, a prospect may visit an institution's campus at the prospect's own expense an unlimited number of times and may make an unofficial visit before the prospect's senior year in high school.

If a prospective student-athlete and/or parent has any questions, please feel free to call Head Coach Rebecca Helt at (570) 577-3598 and/or visit the Recruiting and Compliance links on Bucknell's athletic website, www.BucknellBison.com. Best times to reach Coach Helt are between the hours of 10 a.m. and 10 p.m. Also, please feel free to forward any correspondence you feel will be helpful in Coach Helt's assessment of a prospective student-athlete.